

# Clover Leaves



Eau Claire County's 4-H Newsletter



*4-H is a community of young people across America who are learning leadership, citizenship, and life skills.*

February 2019

## In this issue

Project Information Facebook	2
Calendar & Leaders Assoc. OYC Fund Request 4-H Prog Coord Position	3
4-H On the Air Project Guide Books YQCA Info	4
Tri-County Music & Speaking Results	5
Market Match Info & Sign-up Rabbits for sale, p. 8	6-8
Sewing Workshops	9
Older Youth Council	10
Sarah Nelson Pancake Breakfast	11
Foods Review Info & Sign-Up	12-14
Summer Camp Reg Form	15
Targhee Sheep Flock Info	16
Interstate Ex. Fundraiser	17-18
Meetings & Upcoming Events	19
Pig Project Scholarship	20
Jackson Co. Caprine Day	21-22
Trip Info	23
Fair Sponsorship	24-26
Club Minutes	27-31
Tri Co Arts, Crafts, Drama, Photog Festival	32-40
Milwaukee County Horse Model Show	41-46
OYC Funds Request Form	47

September was 4-H '30 Days of Doing.' If you didn't get a chance to use some of the awesome resources during September, it seems fitting to bring this up now that our kids have been stuck inside 5 of the last 7 school days. Winter is a perfect time to think about DOING with your kids! 4-H provides some great curricular materials for you to use with kids during these ho-hum days of winter.

Check out the wonderful resources at <https://4-h.org/parents/curriculum/>. At the bottom of the curriculum pages there is a great resource with 60 hands-on activities that you can download and enjoy with your kids. There is also a wonderful computer coding project that we used for National Youth Science Day with over 400 youth in Eau Claire County during the month of October. If your family missed out on this project. Please contact me at [thesinjm@uwec.edu](mailto:thesinjm@uwec.edu) we have 80 kits that are available for families to check out to enjoy this cool project at home with the whole family.



## Better Together



If you haven't liked or followed our Eau Claire County 4-H page yet, be sure to do that! You can find it on Facebook at: Eau Claire County 4-H. We post loads of great resources at that site for you to download and enjoy! Remember that our year long theme for 4-H is #InspireKidstoDo I'm not sure about you, but after having the kids home for five days in the last week, there seems like no better time do exactly that! If you share your DOING adventures on social media, be sure to include the hastags- #TrueLeaders #InspireKidstoDo #4HInspires #ECCounty4H

Yours in inspiring kids through 4-H,

Jodi Thesing-Ritter

President 4-H Leaders Association

University of Wisconsin, U.S. Department of Agriculture and Wisconsin counties cooperating. An EEO/AA employer, Extension provides equal opportunities in employment and programming, including Title VI, Title IX and American with Disabilities (ADA) requirements.

Eau Claire County UW-Extension Office

227 1st Street West

Altoona, WI 54720

Phone: (715) 839-4712

Fax: (715) 839-6277

Website: [eauclaire.uwex.edu](http://eauclaire.uwex.edu)

Facebook: [facebook.com/eauclairecountyuwex](https://facebook.com/eauclairecountyuwex)

Instagram: [eccounty4hambassadors](https://instagram.com/eccounty4hambassadors)

Snapchat: [eccounty4hambassadors](https://snapchat.com/add/eccounty4hambassadors)

## Andy's Contact Information

If you need assistance, please contact Andy by calling the UW-Extension office at 715-839-4712 or email him at [Andy.Heren@co.eau-claire.wi.us](mailto:Andy.Heren@co.eau-claire.wi.us). The best time to reach Andy is from 9-12:30 and 1:30-4:30.

### Does your club or project group have a Facebook page?

Let us know about it so UWEX can be a fan. Be sure your club/project "likes" [EC County UWEX](#)—let us help each other get the word out!

### New to 4-H this year?

Be sure to "like" [Eau Claire County UW-Extension](#), and the [Expo Center](#), on Facebook to stay current of 4-H and Fair info!



## CLUBS!

Submit the minutes from your last meeting for admission in the *Clover Leaves* so your members can see the highlights and other clubs can see your good example!

Email to Andy by the 20th of each month.

[Andy.Heren@co.eau-claire.wi.us](mailto:Andy.Heren@co.eau-claire.wi.us)

## Project Literature

### Need 4-H publication materials?

EC County 4-H's Publication Library just grew! In addition to materials for the many projects we already had, we just received publications on the following project areas:

- |                    |                                    |             |
|--------------------|------------------------------------|-------------|
| + Adult Leadership | + Science: Wind Power and Robotics | + Health    |
| + Service Learning | + Celebrate Art                    | + Aerospace |
| + Scale Models     | + Photography                      | + Horses    |
| + Theatre Arts     | + Sewing                           | + Rabbits   |

See the full library list here: "[Project Literature Library](#)". Come to the UWEX Office to check-out materials for a month, free!

If you are a **club officer**: we have publications to help you better understand your duties! Contact UWEX to borrow them.

Looking for **Cloverbud** materials? Contact the Extension office.

You can always purchase your own items at

[www.4hmall.org](http://www.4hmall.org)

# Calendar

## February

2-YQCA 9am and 10:30am, UWEX Office  
4-OYC @ PV Community Center  
6-4-H Travelers Fundraiser @ Pizza Ranch, 4-8 pm  
24-Sarah Nelson Pancake Breakfast  
25-Home and Family Committee, 7pm, Sew Complete

## March

3- Foods Revue, 2pm, UWEX Office  
4-OYC @ Oakwood Hills Animal Hospital  
5-Leaders Meeting @ UWEX Office, 7:00  
(Exec Officers @ 6:30)  
9-Sewing Workshop @ Sew Complete, 9:30am

## April

1- OYC @ CVTC  
1- YQCA (Seniors) 6pm, Augusta High School  
1- Livestock Meeting, 7pm, Augusta High School  
2- Wisconsin 4-H and Youth Conference Registration  
Opens, 4pm, 4hOnline  
13-Sewing Problem Solving Workshop @ Sew Complete,  
9:30 am  
22- Home and Family Committee, 7pm, Sew Complete  
26- Sheep & Goat Weigh-in, 5-7pm, Expo  
28- Clothing Revue, 2pm, UWEX Office

## 4-H Program Coordinator Position Opening

The position of 4-H Program Coordinator has been posted for Eau Claire County.

If you or someone you know is interested in this position, please click this [link](#) to get all the details. Deadline for applications is February 18.

# Leaders Association

**Attention 4-H  
Leaders!**  
**The next meeting will  
Tuesday,  
March 5.**

**Full Leaders  
meetings will begin  
at 7:00pm**

## OYC Fund Request

### Older Youth Council

4-H youth who are members of OYC are encouraged to submit a form requesting funds for upcoming 4-H trips, State Teams, or other Educational Experiences. Please use the request form that is included in this issue of the *Clover Leaves*. Along with turning in the form, OYC members are asked to present their request at an upcoming OYC meeting. Although each youth must present his/her own request, we encourage members attending the same trips/experiences to try and make their requests at the same OYC meeting. All requests must be presented before June, so please plan accordingly.

**The request form is on p. 47**

# 4-H On the Air Signup—2019



Image from bing.com

We really need a club or project to sign up for March and September. Please contact Andy to take a spot!

Month	Club	Contact Person
February	Older Youth Council	Kristin Haworth
March		
5th Sat in March	Rodell Busy Bees	Amanda Robinson
April	Maple Drive Boosters	Lisa Roettger
May	Russell Corner Badgers	Jill Welke
June	Pleasant Hill Go-Getters	Jodi Thesing-Ritter
July	Pleasant Valley Clovers	Wendy Duerkop
August	Foster Town and Country	Sara Potter-Melsness
September		
October	Pleasant Hill Go-Getters	Jodi Thesing-Ritter
November	Beef River Pacesetters	Renee Marino
December	Pleasant Valley	Heather Iverson

## YQCA Information

### YQCA

**Saturday, February 2, 2019**

**Eau Claire County Ag Service Building  
(Extension), Altoona**

**JUNIORS (8-11)**

Check-In – 8:30AM – 9AM

Instruction – 9AM – 10AM

**Saturday, February 2, 2019**

**Eau Claire County Ag Service Building  
(Extension), Altoona**

**INTERMEDIATES (12-14)**

Check-In – 10AM – 10:30AM

Instruction – 10:30AM – 11:30PM

**Monday, April 1, 2019**

**Augusta High School, Augusta**

**SENIORS (15-18)**

Check-In – 5:30PM – 6PM

Instruction 6PM-7PM



# **4-H Tri-County Music Festival & Speaking Contest Winners 2019**

## **Speaking Contest**

### **Cloverbud (K-2) - Interpretive Reading**

Paige Anderson, Country Cousins, Eau Claire County

### **Novice (3-4) – Interpretive Reading**

Lane Porter, Otter Creek Ramblers, Chippewa County

### **Intermediate (5-6) – Interpretive Reading**

Rachel Lokkesmore, Truax Eagles, Eau Claire County

### **Junior (7-8) - Interpretive Reading**

Abi Hill, Truax Eagles, Eau Claire County

### **Senior (9 & Up) – Interpretive Reading**

Jack Porter, Otter Creek Ramblers, Chippewa County

### **Intermediate (5-6) – Original Speech**

Gianna Sedlacek, Otter Creek Ramblers, Chippewa County

### **Demonstrations (WI State Fair)**

Jessica Sikora, Otter Creek Ramblers, Chippewa County

Samantha Michaels, Truax Eagles, Eau Claire County

## **Music Festival**

### **Vocal Performance**

\*Edson Hilltop 4-H, Chippewa County, Award of Merit for "Most Original"

Borderline Rebels 4-H, Chippewa County, Award of Merit for "Best Props"

Sunny Valley 4-H, Chippewa County, Award of Merit for "Best Use of Younger Members"

Wissota Raptors 4-H, Chippewa County, Award

### **Dance**

\*Missouri Valley 4-H, Dunn County, Award of Merit for "Best Theme"

\*Maple Drive Boosters 4-H, Eau Claire County, Award of Merit for "Best Choreography"

\* - designates State Fair Selection

# Market Match Program Volunteers Needed



Would you like to see all families eat plenty of fruits and vegetables for a healthy life? YOU can help!



When a farmers' market customer of limited income spends one FoodShare dollar with their FoodShare card, they are given an additional dollar token to spend at the market up to \$10 a week. This program is called Market Match.

4-H and JONAH volunteers sell the tokens. This is where you can help!

Due to community support, Market Match has had lots of amazing success:

- **Buying fresh, local food is important to FoodShare families.** FoodShare patrons spend about \$21 per visit, while getting a maximum \$10 in direct match.
- **Market Match participation is increasing.** In 2018, non-duplicated FoodShare patrons using Market Match increased to 432, a 52% increase from 2015 when the program was started. Patrons' visits per season have also increased.

- Market Match provided over \$10,000 in direct match to FoodShare patrons this year. Patrons' annually report increased food security despite the lack of subsidized school meals in the summer.
- The majority of Market Match patrons reported eating more fruits and vegetables and saving money on produce.

Help us build a community where all children and families have access to healthy, affordable produce.

Please consider volunteering to help sell tokens at the Eau Claire Downtown Farmers Market each Saturday beginning the first weekend in June until the end of September. We need two volunteers each time slot who will arrive by 8:15AM and work until 12:45. Sign up today or call Andy at the UW-Extension office at 715.839.4712 during regular business hours.

Thanking you for helping us continue the great success of Market Match!

Sincerely,

Market Match Organizing Team



Sandy Tarter  
Food Wise, UW-Extension  
Eau Claire County



Deidra Barrickman  
EC Downtown Farmers Market  
Manager



**Pick your week for helping at the  
Market Match table on the next page!**

**Call Andy at 715-839-4712 or email him to get  
on the list!**

# Market Match Sign-Up

Date	Club	Contact Person
June 1	Eau Claire Clovers	Cindi Syverson
June 8		
June 15	Truax Eagles	Leslie Steinke
June 22		
June 29		
July 6		
July 13	Eau Claire Clovers	Francine Clark
July 20		
July 27	Eau Claire Clovers	Brenda Parker
August 3	Eau Claire Clovers	Erin LaFaive
August 10	Eau Claire Clovers	Jen Berger
August 17		
August 24		
August 31	Pleasant Hill Go Getters	Jodi Thesing-Ritter
September 7	Eau Claire Clovers	Katie & Tim Skutley
September 14		
September 21		
September 28		

## THESE RABBITS ARE IN NEED OF A GOOD HOME



Two cute and beautiful Mini Rex rabbits need a home. Meet Tora and Mystic. These does (girls) are not yet a year old and are not spayed. Cost \$10 each. There is a metal pen/cage available for free with the rabbits and a two story rabbit hutch available for \$30 or best offer. (orig. \$120) If interested, please call or text Janice Moe at 715-379-5761.

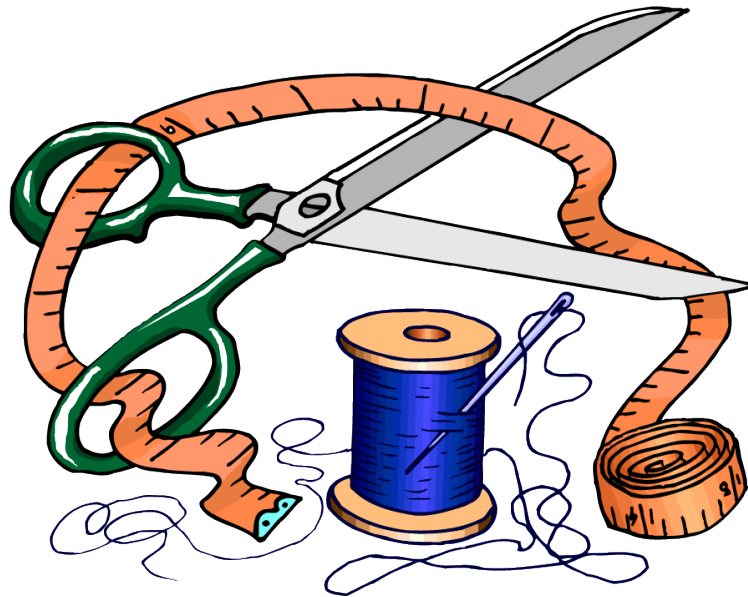




# Upcoming Sewing Workshops

## 2019 Sewing Workshop

Eau Claire County 4-H members are invited to attend a sewing workshop on Saturday, March 9, 2019 from 9:30 a.m. - approximately 1 p.m., at **Sew Complete**, 1408 S. Hastings Way, Eau Claire. We will help you with your choice of basic pull-on pants, or pajama pants or pull-on skirt. Participants will get a “good start” on their project, and may need to finish up on their own. There is no cost for the instruction, but you will need to purchase your own pattern and materials. Contact Jamie at **Sew Complete** to register for the class and discuss appropriate pattern and fabric choices. You do not need to purchase your items at **Sew Complete**, but if you do, you will get 10% off items for your 4-H Clothing project. **So that we can plan appropriately, and you have time to choose your materials, we need to have you register by Monday, March 4, 6 p.m.** Call 715-832-3343, or 1-800-924-4075 or email [sew@sewcompleteinc.com](mailto:sew@sewcompleteinc.com) , or stop at the store.



## 2019 Problem Solving Workshop for Sewing Projects Offered

Many Eau Claire County 4-H members have taken part in the basic “Elasticized Pant or Skirt” workshop or created other simple sewing projects in the past. Are you now expanding your sewing skills? There are a variety of Classes and Lots to choose from for the Clothing project as well as the Home furnishings project. Maybe you have chosen a project from a Lot in your Class, but feel you need a little advice as you work through your pattern instructions. A workshop has been set up to help with these questions. Please bring your project, your pattern, along with the instructions, and all materials you are using. If you wish to bring your sewing machine so that you can work through a section or two of your project you may do so. The workshop will be held on Saturday, April 9, 9:30 a.m.-1 p.m. at Sew Complete, 1408 S. Hastings Way. Please register by Monday, April 8, 5 p.m. if you plan to come. Contact Jamie at 715-832-3343.

# Older Youth Council



**Next Meeting  
February 4th**



**Pleasant Valley  
Community Center**

**Pancake Breakfast Committee-6:30  
Meeting-7:00**

Upcoming Events:  
Sarah Nelson Pancake  
Breakfast: Feb. 24th 8-  
1pm @ Pleasant Valley  
Community Center  
Relay For Life:  
June 7th

Our  
January Meeting  
was Jan. 7th. The  
Pancake Breakfast  
Committee met before the  
meeting. Pancake Breakfast,  
Fair Olympics, and Fairly  
Odd Games were  
discussed.



Eau Claire County 4-H  
Older Youth Council



@ec\_oyc



chuck4h@gmail.com

# **PANCAKE BREAKFAST & BAKE SALE**



## **WHAT:**

**A Pancake Breakfast & Bake Sale  
in memory of Sarah Nelson  
(PROCEEDS WILL BE DONATED  
TO THE RELAY FOR LIFE)**

## **WHERE:**

**At the Pleasant Valley Community Center, Cleghorn**

## **WHEN:**

**Sunday, February 24, 2019 8am-1pm**

## **PRICE:**

**Adults - \$6.00, Children (ages 5-10) - \$4.00**

**Children (4 & under) - Free**

## **WHO:**

**Eau Claire County 4-H  
Older Youth Council (OYC)**

Eau Claire County Older Youth Council is a group of young people consisting of 8th grade through high school age 4-H members that work together, donating their time on a variety of community service projects within the county, state and on a national level.

Sarah Nelson was a very involved member of the Older Youth Council and instrumental in creating a Relay for Life team with the group. Sarah's dedication to this important cause is the sustaining force that keeps current members dedicating the event in her memory each year. Sarah lost her life in a car accident in 2003.



**Please come and support OYC and Relay for Life!**

## 2019 Foods Revue Registration Form

*The Foods Revue will be held on **Sunday, March 3, 2019**, at the UWEX Office in Altoona. Registration will be at 1:30 p.m. with the judging starting at 2:00 p.m.*

This form must be postmarked or dropped off at the UW Extension Office on or before **February 22, 2019**

Your entry **MUST** include your recipe and your menu (if required for your entry).

**LATE OR INCOMPLETE ENTRIES WILL NOT RECEIVE FAIR PREMIUMS.**

NAME \_\_\_\_\_ AGE \_\_\_\_\_ GRADE \_\_\_\_\_

ADDRESS \_\_\_\_\_

CITY \_\_\_\_\_ ZIP \_\_\_\_\_ CLUB \_\_\_\_\_

DEPT \_\_\_\_\_ CLASS \_\_\_\_\_ ITEM #/DESCRIPTION \_\_\_\_\_

\_\_\_\_ THE RECIPE WHICH I WILL PREPARE MAR. 3 IS ATTACHED AND I HAVE DOUBLE-CHECKED IT FOR ACCURACY!

\_\_\_\_ Except if I am a Cloverbud, I have included my menu for meal or full day as required with this entry.

***This is a fair entry. You MUST enter Foods Revue again on your fair entry form to get premium!***

The following adult or youth leader would like to help at Foods Revue:

---

NAME \_\_\_\_\_ PHONE \_\_\_\_\_

E-MAIL ADDRESS \_\_\_\_\_

*Return to: Eau Claire County Extension Office, 227 1<sup>st</sup> St. West, Altoona, WI 54720  
by the deadline listed above.*

---



## **Dept. 17-C - Foods Revue Cloverbuds**

### **CLASS AC-K - CLOVERBUDS - Pre-Kindergarten & Kindergarten**

#### **CLASS AC-1 - CLOVERBUDS - 1 Grade**

#### **CLASS AC-2 - CLOVERBUDS - 2 Grade**

Bring a simple food that you have made by yourself. Exhibitor should be prepared to talk to the judge about how food was prepared. Exhibitor should display food on plate with placemat or cloth and napkin and, if needed, silverware to eat the food prepared. No centerpiece and no recipe required.

#### **LOT:**

1. Simple Food

## **Dept. 17-C - Foods Revue Exploring**

### **CLASS BC - EXPLORING - Open to members enrolled in Exploring Project**

Exhibitor should be prepared to talk to the judge about how food was prepared and what food group(s) the food is in. Exhibitor should display food on plate with placemat or cloth and napkin, and silverware to eat the food prepared, if needed. No centerpiece required.

#### **LOT:**

1. Simple Bar Cookie (3)
2. Microwave Snack
3. Simple Cold Lunch Item
4. Simple Breakfast Item
5. Experiment

## **Dept. 25-C - Foods Revue**

### **CLASS AC-1 - FOODS & NUTRITION - grades 3 - 5**

Entry to include one prepared food, menu for one meal, placemat or cloth, one place setting for entire meal, serving pieces for food prepared, and centerpiece. Be prepared to explain simple nutrition concepts to the judge.

#### **LOT:**

1. Salad
2. Main Dish
3. Dessert (not cookies or bars)
4. Any Bread

### **CLASS AC-2 - FOODS & NUTRITION - grades 6 - 8**

Entry to include one prepared food, menu for a full day, placemat or cloth, one place setting for entire meal, serving pieces for food prepared, and centerpiece. Be prepared to explain reasons for planning your menu (texture, color, etc.) and to answer nutritional questions regarding the USDA's Food Guide Pyramid.

#### **LOT:**

1. Salad
2. Main Dish
3. Dessert (not cookies or bars)
4. Any Bread
5. Box Lunch

### **CLASS AC-3 - FOODS & NUTRITION - grades 9 and up**

Entry to include all prepared foods for an entire meal (This means whatever is on your menu for that meal that day, **BUT** you do **NOT** have to make every item from scratch. Only one item **MUST** be "homemade". However, if you would like to make more than one item from scratch that is fine. You should **ONLY** submit the recipe for your homemade item.) Your entry must also include your menu for a full day, placemat or cloth, one place setting for entire meal, serving pieces for food prepared, and centerpiece. Be prepared to explain time management, theme, preparation and clean-up plus Class AC-2 content questions.

#### **LOT:**

1. Special occasion meal
2. Box Lunch
3. Brunch
4. Meal for a special need (for example, but not limited to: low fat, high iron, high fiber, low calorie, low sugar...)

### **CLASS BC-1 - FOOD PRESERVATION - grades 3 - 5**

Entry must include at least one home preserved ingredient, menu for meal, placemat or cloth, one place setting for entire meal, serving pieces for food prepared and centerpiece. Be prepared to answer questions on preservation procedures and nutrition.

#### **LOT:**

1. Salad
2. Main Dish
3. Dessert (not cookies or bars)
4. Any Bread

### **CLASS BC-2 - FOOD PRESERVATION - grades 6 - 8**

Entry must include at least one home preserved ingredient, menu for day, placemat or cloth, one place setting for entire meal, serving pieces for food prepared and centerpiece. Be prepared to answer questions on preservation procedures and nutrition.

#### **LOT:**

1. Salad
2. Main Dish
3. Dessert (not cookies or bars)
4. Party
5. Box Lunch

### **CLASS BC-3 - FOOD PRESERVATION - grades 9 and up**

Entry to include all prepared foods for an entire meal (This means whatever is on your menu for that meal that day, **BUT** you do **NOT** have to make every item from scratch. Only one item **MUST** be "homemade". However, if you would like to make more than one item from scratch, that is fine. You should **ONLY** submit the recipe for your homemade item.) The entry must include at least one home preserved ingredient, menu for day, placemat or cloth, one place setting for entire meal, serving pieces for food prepared and centerpiece. Be prepared to answer questions on preservation procedures and nutrition.

#### **LOT:**

1. Special occasion meal
2. Box lunch
3. Brunch
4. Meal for a Special Need (for example, but not limited to: low fat, high iron, high fiber, low calorie, low sugar...)

### **CLASS CC-1 - CAKE DECORATING - grades 3 - 5**

### **CLASS CC-2 - CAKE DECORATING - grades 6 - 8**

### **CLASS CC-3 - CAKE DECORATING - grades 9 and up**

Open to members enrolled in Cake Decorating or Foods & Nutrition program. Entry to include prepared and decorated cake, menu for a meal (3rd - 5th grade) or full day (6th grade & up), placemat or cloth, one place setting for entire meal, serving pieces for food prepared and centerpiece. Be prepared to explain reasons for planning your menu (texture, color, etc.) and to answer nutritional questions regarding the USDA's Food Guide Pyramid.

#### **LOT:**

1. Cupcakes
2. Flat Cake (cut-up, smooth surface, or pre-formed)
3. Layer Cake (layered or tiered)

### **CLASS D - EXPERIMENT**

Exhibit showing the results of an experiment you have conducted related to Foods & Nutrition. (See examples in the "Tasty Bites" literature). Will be judged on communication of results, neatness and interest.

#### **LOT:**

1. 3, 4 & 5 Grade
2. 6, 7 & 8 Grade
3. 9 Grade and up

### **CLASS E - ECONOMICAL MEAL**

Entry to include one prepared main dish item for the main meal of the day, menu for the meal, placemat or cloth, one place setting for an entire meal, serving pieces for food prepared, and centerpiece. In addition, member must show cost of main dish, per person served. Cost per person must be less than \$2.00. Member should be aware of economy in entire display including centerpieces and tableware. Be prepared to explain costs, nutritional planning, and preparation.

#### **LOT:**

1. 3, 4 & 5 Grade
2. 6, 7 & 8 Grade
3. 9 Grade and up





# Eau Claire County 4-H Summer Camp!

## June 10-13 at Beaver Creek Reserve



Summer 4-H Camp at beautiful Beaver Creek Reserve, north of Fall Creek, will be held June 10-13, 2019. There will be a Cabin Camp, Outpost Camp, and a Cloverbud Camp.

**Cabin Camp - Youth in grades 3-6** in 2018-2019: Activities such as swimming, archery, crafts, games, nature, singing, campfire programs, and MUCH MORE will be included! The COST for registrations received by May 17 is \$90.

**Outpost Camp—Youth in grades 7-8** in 2018-2019: Activities such as swimming, archery, crafts, games, nature, singing, campfire programs and MUCH MORE will be included! The COST for registrations received by May 17 is \$90. Outpost campers will spend one night (Tuesday the 11) tent camping at BCR, making their own meals and experiencing outpost adventures. During the rest of the camp, they will be housed in the Cedar Dorms. **ALL YOUTH IN GRADES 7-8 MUST ATTEND OUTPOST!!**

**Cloverbud Camp - Youth in grades 1-2** in 2018-2019: Experience a one day/night (Tuesday the 11 -Wednesday the 12) camp schedule with activities such as hiking, campfires, astronomy, crafts, nature activities with Beaver Creek staff and MORE! **Cloverbud Camp is limited to 10 youth from each county. We need a minimum of 10 campers to hold Cloverbud Camp.** The COST for registrations received by May 17 is \$50.

Camp fees cover lodging, all meals, crafts, group accident insurance policy, a t-shirt, and special programs. Additional assistance is available for families with financial need. Requests will be kept confidential. Contact Jodi Thesing-Ritter at 715-828-7221. Non-4-H friends may participate, please add \$10 to the fees listed above.

*These fees would be higher, but the Eau Claire 4-H Leaders Associations and the Eau Claire 4-H Older Youth Council are making a generous contribution for EVERY youth attending camp in order to keep camp costs affordable for families.*

**SPACE IS LIMITED!** Campers will be taken on a **first come, first served** basis. **CABIN/OUTPOST CAMP IS LIMITED TO 85 CAMPERS!** Mail or drop off your registration form with payment (**CHECKS PAYABLE TO 4-H OLDER YOUTH COUNCIL**).

A letter will be sent in June with information on items needed for camp and other details. Health forms **MUST** be completed in 4-H Online. If you are a non-4-H member, please contact the UW-Extension Office in Eau Claire County.

The 4-H Camp Staff wants **YOU** to come and have a great time!

### 2019 4-H SUMMER CAMP REGISTRATION FORM - (PLEASE use only ONE form per camper!)

Name: \_\_\_\_\_ School: \_\_\_\_\_

Address: \_\_\_\_\_

City: \_\_\_\_\_ Zip \_\_\_\_\_ Phone # \_\_\_\_\_

Email: \_\_\_\_\_

Club \_\_\_\_\_ Grade \_\_\_\_\_ CHECK ONE: \_\_\_\_\_ Boy \_\_\_\_\_ Girl

I would like to be in a cabin with my same age friend(s). Their name(s) are:

\_\_\_\_\_

ENCLOSE: \_\_\_\_\_ \$90 - Cabin or Outpost Camper \_\_\_\_\_ \$100 - Non 4-H Cabin Camper

\_\_\_\_\_ \$50 - Cloverbud Camper \_\_\_\_\_ \$60 - Non 4-H Cloverbud Camper

(After May 17 until May 27, add a \$10 late to any of the above fees)

**NO REGISTRATIONS WILL BE ACCEPTED AFTER MAY 27!**

**NO REFUNDS GIVEN AFTER MAY 17!**

INDICATE ADULT T-SHIRT SIZE: \_\_\_\_\_ S \_\_\_\_\_ M \_\_\_\_\_ L \_\_\_\_\_ XL \_\_\_\_\_ XXL

MAIL COMPLETED FORM & FEE TO: Eau Claire County UW-Extension Office  
RE: Summer Camp  
227 1st Street West, Altoona, WI 54720

4-H Summer Camp...It's 4-U! In the operation of the summer camp program, no child, as defined by program regulations, will be discriminated against because of race, sex, color, age, national origin, or disability. Any person who believes that a child has been discriminated against in the USDA related activity should write immediately to the Administrator, Food & Nutrition Service, 3101 Park Drive, Alexandria, VA 22303. Requests for reasonable accommodations for disabilities or limitations should be made prior to the date of the program or activity for which it is needed. Please do so as early as possible prior to the program or activity so that proper arrangements can be made. Requests are kept confidential. Just call (715) 839-4712 or \*711 for Relay.

# U.S. Targhee Sheep Association

PO Box 955  
Chinook, MT 59523



## FOR IMMEDIATE RELEASE:

### 11<sup>th</sup> Annual U.S. Targhee Sheep Association Starter Flock

#### Three Free Registered Targhee Sheep to be Awarded to Deserving Youth

The U.S. Targhee Sheep Association (USTSA) will again, for the 11<sup>th</sup> straight year, be offering a free registered Targhee Starter flock to a deserving youth at the 2019 USTSA National Show & Sale in Lodi, Wisconsin, July 18<sup>th</sup>-20<sup>th</sup>. In the previous ten years, the generous members of the USTSA have awarded 16 starter flocks, totaling 52 head of sheep, and have also donated almost \$12,000 towards buyers credits for the award winners to purchase additional sheep at USTSA national sales. The winner must be present to receive the flock and will be awarded one (1) ewe lamb, one (1) yearling ewe, and one (1) brood ewe donated by members of the USTSA. Each animal will be a USTSA registered animal, and at least QR in Scrapie Codon 171 genotype. The winner will also receive a \$150 credit for use toward purchase of additional animals at the 2019 national sale.

Applications, due **April 1<sup>st</sup>**, are now available to download at [www.ustargheesheep.org](http://www.ustargheesheep.org) or by contacting Mardy Rutledge at the USTSA office ([ustargheesheep@gmail.com](mailto:ustargheesheep@gmail.com) or 702-292-5715). Any young person, ages 9-17, as of January 1, 2019, whose family does not raise Targhee sheep may apply. Applicants should possess a keen interest in the U.S. sheep industry, commitment to raising Targhee sheep over time, and a firm belief in the abilities of the breed. Applicants must demonstrate proof of care, facilities, and transportation. Aside from receiving the flock of sheep, the winning youth, will be paired with a Targhee breeder living near them who will act as a mentor. The association is committed to helping the winner succeed.

Targhee sheep are one of the few breeds developed in the United States at the U.S. Sheep Experiment Station in Dubois, Idaho. Withstanding harsh environments and minimal human intervention, while still producing high quality lamb and wool are hallmark traits of Targhees. Mothering ability and gentle dispositions are additional positive traits of the breed.

The U.S. Targhee Sheep Association believes in the future. The success the program has had thus far has only affirmed it is the right thing to do for young people. Please pass the word along to a young person you know. Visit the USTSA website at [www.ustargheesheep.org](http://www.ustargheesheep.org) for more information.

*Mardy Rutledge, Secretary (702) 292-5715 [ustargheesheep@gmail.com](mailto:ustargheesheep@gmail.com)*



# Eau Claire County 4-H Interstate Exchange Travel Group



Help them reach their goal!  
Shop & Support Fundraiser



**FEBRUARY SPECIALS**

**Biggest LUT special ever!**

This month only, our famous Large Utility Tote is just \$10 with every \$35 spent!

- #1 bestseller
- 24 prints to choose from
- 7 new for spring

Check out your LUT with a Stand Tall insert for just \$18 with every \$35 spent

**FREE Hostess' Choice**

Up to \$250 value!  
Build your own special February Hostess' Choice tote with a \$10 tote + personalized gift tag = for FREE with a \$500+ (all in!)

**Plus:** Be rewarded for sharing the fun of Thirty One with your friends!

- Earn 100 points
- Get MORE Hostess' Choice
- Shop Hostess' Exclusive at 50% discount!

Age not for details

**Get the Large Utility Tote for \$10, Stand Tall insert for \$18 or Mystery Bundle for \$20 with every \$35 spent!**

**Start up your Special!**

\$20 February Mystery Bundle (\$475)  
Unleash it to back! Choose an exciting Mystery Bundle for your February Hostess' Choice to help make \$35 spent! You'll get one or more Thirty One products at a savings of 50% to 70% when you shop!

**And you can't miss with a Stand Tall insert**

**Prices (all items) \$10 to \$100**

- Large Utility Tote: \$10 (all in!)
- Stand Tall insert: \$18 (all in!)
- Mystery Bundle: \$20 (all in!)

**Prices (all items) \$10 to \$100**

- Large Utility Tote: \$10 (all in!)
- Stand Tall insert: \$18 (all in!)
- Mystery Bundle: \$20 (all in!)

Shop the catalog and support your local 4-H chapter at the same time! 20% of all items purchased go directly to the group

Mary Behling - 715-577-2979 - [www.mythirtyone.com/marybehling](http://www.mythirtyone.com/marybehling)

Please see the next page for the order form.

# Eau Claire County 4-H Interstate Exchange Travel Group

Guest Name \_\_\_\_\_ Date \_\_\_\_\_

Address \_\_\_\_\_

City \_\_\_\_\_ State \_\_\_\_\_ Zip \_\_\_\_\_

Phone \_\_\_\_\_ Email Address \_\_\_\_\_

Hostess Name \_\_\_\_\_ Party Date \_\_\_\_\_

Please check the box if you would like to: ☐ Host a party ☐ Become a Consultant ☐ Share the name of someone who would love Thirty-One  
☐ Receive ongoing email communication from Thirty-One and the Consultant at this party

Please refer to the Personalization Studio in your Catalog for design, font and design color information while filling out order form.

*thirty-one*

celebrate | encourage | reward

Thirty-One Gifts LLC  
3425 Morse Crossing, Columbus, OH 43219  
Phone: 1-866-GFTS31

Product		Personalization			Item Price	Pers. Price	Total Price
Item No.	Qty.	1 Design					
Item Name		2 Font					
Photo		3 Design color					
Item No.	Qty.	1 Design					
Item Name		2 Font					
Photo		3 Design color					
Item No.	Qty.	1 Design					
Item Name		2 Font					
Photo		3 Design color					
Item No.	Qty.	1 Design					
Item Name		2 Font					
Photo		3 Design color					
Item No.	Qty.	1 Design					
Item Name		2 Font					
Photo		3 Design color					
Item No.	Qty.	1 Design					
Item Name		2 Font					
Photo		3 Design color					
Item No.	Qty.	1 Design					
Item Name		2 Font					
Photo		3 Design color					

Consultant contact information:

Mary Behling  
3631 Goldridge Road  
Eau Claire WI 54701  
715-577-2979

[www.mythirtyone.com/MaryBehling](http://www.mythirtyone.com/MaryBehling)

Trisha Friederichs  
715 834 2426

white: Consultant copy yellow: No copy pink: Guest copy  
shop 101507100030

☐ Cash ☐ Check # \_\_\_\_\_ ☐ Credit Card

Name on card: \_\_\_\_\_

Card #: \_\_\_\_\_

Exp. \_\_\_\_/\_\_\_\_/\_\_\_\_

Billing address: \_\_\_\_\_

Billing city & zip code: \_\_\_\_\_

Signature \_\_\_\_\_

You, the Buyer, may cancel this transaction at any time prior to midnight of the third business day (five business days in Alaska) after the date of this transaction. See the Notice of Cancellation on the reverse side for an explanation of this right. It is the Consultant's responsibility to safeguard all credit card information, maintain a secure internet connection during any ordering and to safely destroy ALL documents containing customer credit card information after the order is completed.

\*Personalization cost included with pillows and wall art

Product subtotal \$ \_\_\_\_\_

8% Delivery charge\* \$ \_\_\_\_\_

Ship directly to Guest address (add \$45 shipping) \$ \_\_\_\_\_

Other Shipping Options (optional ship) \$ \_\_\_\_\_

Total \$ \_\_\_\_\_

with delivery charge

Sales tax 5.5 % \$ \_\_\_\_\_

Round Up! or make a donation\* \$ \_\_\_\_\_

mythirtyone.com/give, optional ship  
\*See back of form details

Grand total \$ \_\_\_\_\_

\* Delivery charge is the cost to process an order and ship it to the Consultant or Hostess. Delivery charge is 10% for Alaska, Hawaii and the U.S. Territories.

# Meetings and upcoming events

## LEADERSHIP

### Essential Elements Training For 4-H Adult and Youth Volunteers

Belong, Mastery, Generosity and Independence are the 4 Essential Elements of Positive Youth Development that are focused online 4-H Youth Development.

Would you like to learn more and how they relate to your role as a leader working with youth?

Check out how you as an adult volunteer or youth leader can foster the development of these elements in the youth. Each module is about 7- 10 minutes in length. You move through the module at your own pace. It will take you about 30 - 45 minutes to complete all four modules.

[Click Here](#) to get started.

## HOME & FAMILY

### Home & Family Committee Invitation

This committee plans and facilitates the Foods Revue, Clothing Revue, fair exhibits and any other "business" in the Home & Family area. We meet only four times a year (September, November, February and April) and new members are always welcome - both youth and adult! The next meeting is February 25, 2019, from 7:00-8:30 pm at Sew Complete. If you need more information, call Jamie Mossige, Chair, at [sew@sewcompleteinc.com](mailto:sew@sewcompleteinc.com) or the Extension Office.

A foods revue workshop will be held at the Extension office on January 22. Watch for more information in the January Clover Leaves

The date for the Foods Revue and Clothing Revue have been set.

Food Revue: March 3, 2019

Clothing Revue: April 28, 2019

## Educational Experiences

### Space Camp Registration

Want to participate in a fun-filled educational weekend at the U.S. Space & Rocket Center in Huntsville, AL: participants will complete a simulated Space Shuttle mission, experience training simulators, tour the U.S. Space & Rocket Center and learn about becoming an astronaut. Enrolled 4-H members who are in grades 6-8 may apply. Applicants can register for 2019 Space Camp through 4HOnline that will be open at **4:00p.m. November 7, 2018 until midnight on Jan. 1, 2019.** for more information go to

<https://fyi.uwex.edu/wi4hedopp/files/2018/09/19-SC-Del-Registration-and-Scholarship-info.pdf>

## Scholarships

### 4-H Scholarships

The Wisconsin 4-H Foundation will award more than \$10,000 in scholarships to outstanding Wisconsin students pursuing higher education in 2019. To be considered for financial support, applications must be received by the Wisconsin 4-H Foundation via email by Friday, March 15, 2019, 5:00 pm.

Wisconsin 4-H Foundation scholarships are awarded to students based on demonstrated personal growth, development and leadership, academic performance and future educational goals.

To be eligible for Wisconsin 4-H Foundation scholarships, students must have been a Wisconsin 4-H member for at least one year; have a grade point average of at least 2.5 on a 4.0 scale, and be enrolled or planning to enroll at a university, college or technical school during the 2019-2020 academic school year.

How to apply and more information is available at:

<http://wis4hfoundation.org/scholarships/>

Questions? Contact the Wisconsin 4-H Foundation office at 608.262.1597 or [Info@Wis4HFoundation.org](mailto:Info@Wis4HFoundation.org)

### **4-H License Plate is HERE!!**



We wanted you to know: The Wisconsin 4-H license plate is available through the Wisconsin DMV, as of September 1, 2018. Plates sold to Eau Claire County vehicle owners will directly benefit Eau Claire County 4-H programming! Please visit the Wisconsin DMV for pricing and more information:

<https://wisconsin.gov/Pages/dmv/vehicles/title-plates/4hf.aspx>

## New UW-Extension Hours

Our office hours have changed! All Eau Claire County offices have changed hours of operation from 8:00 AM - 4:30 PM, Monday – Friday, except 24/7 operations.

That means that the UW-Extension office has the new hours as well.





December 14, 2018

Contact: Mandy Masters

608-723-7551

### WPA Offers Youth Pig Project Scholarships

The Wisconsin Pork Association Youth Committee is once again offering Youth Pig Project scholarships. These scholarships are designed to assist 4-H and FFA members in establishing swine projects that can lead to development of life skills and career opportunities in the Wisconsin pork industry.

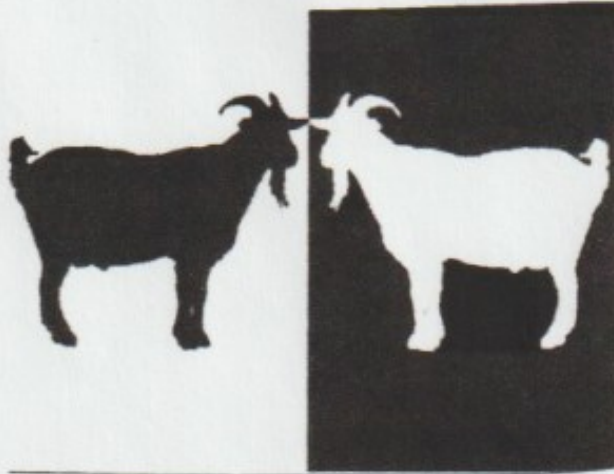
4-H and FFA youth are eligible to apply for a \$50.00 scholarship used to offset costs associated with their 2019 pig project. Scholarships will be awarded in three age divisions, as follows: Ages 9-12, 13-15, and 16-19 (as of January 1, 2019). Thanks to support from pig breeders throughout the state, at least twenty \$50.00 scholarships will be awarded this spring.

Interested youth may download the scholarship application form from the WPA website at [www.wppa.org/youth-pig-project](http://www.wppa.org/youth-pig-project) or call the WPA office at 800-822-7675 to have a copy mailed. Completed application forms must be emailed or postmarked no later than February 1, 2019.

The 2019 Youth Pig Project Scholarships are being made possible in part by the following sponsors: ACJ Farm; Goplin Show Pigs; George Holst; Jake's Pig Palace; Keel Show Pigs; Krebs Farms; Magolski Farms; Walsh Family Farm; and Wehrle Farms. WPA is still accepting program sponsorships through February 1, 2019. Anyone interested in becoming a sponsor should contact the WPA office at 608-723-7551 or email [mmasters@wppa.org](mailto:mmasters@wppa.org).

*The Wisconsin Pork Association's mission is to insure the future success of the Wisconsin pork industry. WPA represents the interests of the pork industry members with a strong emphasis on social issues, public and government policies, environment, animal welfare and safety.*





**JACKSON COUNTY CAPRINE DAY  
OPEN TO ALL GOAT ENTHUSIASTS JACKSON COUNTY RESIDENT OR NOT**

**MAY 18, 2019 9AM - 3PM  
Univ. WI Extension 227 South 11th Street  
BLACK RIVER FALLS, WI  
COST \$20 adults \$15 youth (15yrs. and under)  
lunch included in price**

**PROCEEDS WILL BE USED FOR THE PURCHASE OF NEW PENS  
IN THE GOAT BARN AT THE FAIRPARK**

**CLINICS WILL BE ON:**

**EMERGENCY FIRST AID KIT FOR GOATS  
KIDDING  
MILK (QUALITY, BUTTERFAT, PASTUERIZATION,ETC)  
FENCING/PENS  
PREPAIRING FOR A FAIR/SHOW**

**SILENT AUCTION ITEMS WILL BE AVAILABLE TO BID ON**

2019 Jackson County Caprine Day  
Registration Form

The 2019 Jackson County Caprine Day will be held at the Univ. of WI Extension 227 South 11th Street Black River Falls, WI on May 18, 2019 from 9am-3pm. Please mail payment and registration form to Jackson County Goat Superintendent c/o Cathy Franck N13009 Bluffview Road, Osseo, WI 54758. Registration ends on May 10, 2018 and a late fee of \$5.00 will be added if received after May 10.

Registration:

\_\_\_\_\_ Youth (15yrs. and under) \$15.00

\_\_\_\_\_ Adult \$20.00

Total amount due \$\_\_\_\_\_ Payable to Jackson County Parents & Leaders (Please place the words Goat Clinic in the memo section on your check)

Name (First & Last )

\_\_\_\_\_

Address

\_\_\_\_\_

City

State

Zip

\_\_\_\_\_

E-mail

\_\_\_\_\_

Please send a check for the amount due and the registration form to:

Jackson County Goat Superintendent  
c/o Cathy Franck  
N13009 Bluffview Road

## Educational Experiences

### **American Spirit East—June 7-16 or July 5-14, 2019 Registration Open now-Jan 10**

Approximately 40 youth learn about America's heritage and build awareness of the many steps taken to gain U.S. independence and freedom by visiting historical sites in Philadelphia, New York, Boston and more. Delegates must be in 8th-10th

### **Space Camp—April 25-29 Registration Open now– Jan 1**

Delegates team up for hands-on mock space missions and other STEM activities in this NASA program while exchanging ideas with 4-H youth from across Wisconsin. Delegates must be in 6th-8th grade at the time of the program. Maximum age is 15 at the time of the program. Camp counselors may be in 7th to 10th grade. Delegates may only attend once as a youth (excludes counselors). Approximate fee of \$625.

### **Citizenship Washington Focus-June 15-23 or July 6-14 Registration Nov 15–Dec15**

Approximately 120 Wisconsin youth are selected to attend this leadership program held at the National 4-H Center in Washington D.C. Participants learn the importance of civic and social responsibilities as they relate to the development of better citizens and leaders. The week consists of participatory workshops, speakers, committee work, field trips and social events. Delegates must be in 10th-12th grade at the time of selection and minimum age is 15 by the time of the program. Delegates may only

### **National 4-H Conference—April 5-11 Applications due Dec 15**

Six to eight youth are selected to attend this working civic conference held at the National 4-H Center in Washington, D.C. Each delegate selects an issue and collaborates with youth from across the country in an effort to help better direct future 4-H programming. Delegates spend the majority of time contributing to stimulating, task-oriented groups. One day is spent on Capitol Hill meeting with Wisconsin legislators. Delegates must be in 10th-12th grade during the program. The maximum age to participate is 18 as of 1/1/19. Approximate fee is \$1300.

### **Wisconsin 4-H & Youth Conference - June 24-27 2019 Registration April 2-15**

Approximately 500 youth attend this pre-college program in Madison, WI each summer. Participants take part in educational seminars and assemblies and meet people from across Wisconsin. They are encouraged to take what they learn and share it with others in their home community. Delegates must be in 7th-10th grade at the time of selection. Members of Wisconsin Leadership Council, State Art Team, State Communications Team and Drama Company may be in 9th-13th grades.

### **National 4-H Congress— Nov 29-Dec 3, 2019 Registration May 1-June 1**

Held in Atlanta, GA Delegates participate in self-development seminars, tours and perform community service while exchanging ideas with youth from across the country. Delegates must be in 10th-12th grade at the time of selection. The maximum age to participate is 18 as of 1/1/19. Approximate fee is \$1200.





January 16, 2019

Greetings!

Since its first year in 1924, The Eau Claire County Fair has been an educational experience for patrons of all ages. This free and family focused event is held the last week in July, and truly has something for everyone. Visitors can enjoy the Classic Car Show, Western Horse Shooting Sports, Livestock Auction, Animal Exhibits, STEM Day, Kid's Day activities on Friday and Saturday (*featuring a petting zoo, emergency vehicles, and safety displays*). Visitors can experience these and many more activities at the Fair.

In an effort to create a more efficient sponsorship process for the Eau Claire County Fair, a streamlined method was implemented for your convenience. Sponsorship requests have been compiled to create a more pleasant way for you to contribute your support to the Eau Claire County Fair. You also have an option to select a tent or building on the fairgrounds to be named after your organization for the week of the 2019 Eau Claire County Fair!

None of these wonderful community opportunities would be possible without support from generous donors like you! The following page includes a breakdown of ways in which you can become or continue to be a partner in the future of the Eau Claire County Fair.

Sincerely,

The Eau Claire County Fair Committee



**Eau Claire County Fair Legacy Partner:** (\$1,500+) Your name will be displayed on one of our tents or buildings on the fairgrounds during the week of the fair. Your company logo along with your name will also be included on the official Fair T-shirt. You will also receive all benefits associated with diamond donors.

**Diamond Donors:** (\$1,000.00-\$1,499.99) Your name and company logo will be in color on the widely distributed Fair brochure and displayed on banners and event brochures throughout the Fair grounds. Your company name will be included on the official Fair t-shirt.

**Platinum Donors:** (\$500-\$999.99) Your name will be listed on the Fair brochure and displayed on banners and event brochures throughout the Fair grounds.

**Gold Donors:** (\$250-\$499.99) Your name will be listed on the Fair brochure and displayed on banners throughout the Fair grounds.

**Silver Donors:** (\$100-\$249.99) Your name will be listed on our Fair brochure and included on a banner along with other Silver Donors during the fair.

**Bronze Donors:** (\$25.00-99.99) Your name will be listed with other generous donors on a banner during the fair.

If you are donating at a level that includes the promotion of your logo please email your logo to [lisa@johnsonlitho.com](mailto:lisa@johnsonlitho.com).

**Questions?** Please contact one of the following Fair Committee Members with any questions you may have.

Debbie Kitchen [\(715\) 579-4703](tel:7155794703)  
Tammy Schlewitz [\(715\) 456-6119](tel:7154566119)  
Lisa Vetsch [\(715\) 271-5015](tel:7152715015)

**Yes, I want to help the youth of Eau Claire County and support the Fair!**

Please find enclosed my donation of \$\_\_\_\_\_. I would like my donation to go towards: (Please check all that apply)

- ☐ Unspecified Monetary Donation (*Your generous donation will be applied where it is needed*)
- ☐ Tent/Building Sponsorships (*Please contact a member of the fair committee for availability*)
- ☐ Special Fair Events (*Please place a check in the box of your choice if you wish to support a specific event at the Fair*)
- ☐ Classic Car Show   ☐ Kid's Day Activities
- ☐ 4-H Day   ☐ FFA Day   ☐ STEM Day
- ☐ Cowboy Mounted Shooting Sports   ☐ Open Class Beer/Wine

- ☐ In-Kind Donation (*Please specify the items donated and their value on the line provided*)
- Item:** \_\_\_\_\_ **Value:** \_\_\_\_\_

- ☐ Trophies/Ribbons/Fair Awards (\$25 minimum donation) *If you wish, you may specify a category of trophy you would like to sponsor on the line. (Ex. Computers, Natural Science, etc.)* \_\_\_\_\_

- ☐ Animal Award (\$25 minimum donation)   ☐ Livestock (Beef, Sheep, Goat, Swine)   ☐ Dairy   ☐ Poultry/Rabbit
- Please specify the class or award you wish to sponsor* \_\_\_\_\_

- ☐ Animal Husbandry Improvement
- (Example: Pens, stalls, gates, small animal cages, etc.)* \_\_\_\_\_

Name: \_\_\_\_\_

Company Name (*If Applicable*): \_\_\_\_\_

Street Address: \_\_\_\_\_ City: \_\_\_\_\_

State: \_\_\_\_\_ Zip Code: \_\_\_\_\_

Phone Number: \_\_\_\_\_

Email: \_\_\_\_\_

Signature: \_\_\_\_\_

Checks can be made payable to: "Friends of the Fair" and sent to:  
P.O. Box 336 Augusta, WI 54722

We are asking that donations be submitted by March 1, 2019. Payment must be submitted before your name or company logo will be added to Fair materials. All proceeds will help with the continuation of the Eau Claire County Fair. Your support is greatly appreciated!

# OYC Minutes

The regular meeting of the Older Youth Council occurred of January 7, 2019 at 6pm. Prior to the meeting, the Pancake Breakfast Committee met at 5:30pm. The meeting was called to order by Teresa at 6:05pm. Pledges were led by Rachel and attendance was taken. The Secretary's report was given by Beth and motioned by Garrett and Mason. The Treasurer's report was given by Cullen and motioned by Isabel and Garrett.

In old business, Teresa discussed the shopping trip for Adopt a Family. In new business, the Sarah Nelson Pancake Breakfast will be February 24 at 8am-1pm. Teresa will send out the volunteer sign-ups. The Fair Olympics Fairly Odd Games committees will form and start planning at next month's meeting. The Silvermine Fundraiser will be January 18th and 19th. Our next meeting will be February 4th and the Oxford Theater. Birthdays were recognized, and the meeting was adjourned by Garrett and Isabel.

# Club Minutes

## Pleasant Valley's January Secretary Report

Our January meeting took place at the Cleghorn Community Center on January 17, 2019. Before the meeting, officers and a few club members gave demonstrations on projects they'd done before. The meeting was called to order at 6:50pm by our vice president Anna. Sophie led the pledges. Roll call was taken as members arrived. Karson and Nolan gave their presentation about the trip they took to Grand Island, Nebraska this past summer to participate in shotgun at the National Shooting Sports Championship. Connor read the treasurer's report and Rachel read the secretary report; Sydney made a motion to pass both and Dustin seconded the motion. Happy birthday to our members with January birthdays: Isabelle and Olivia R! We split into five groups to do our building with beans activity. Each group had ten minutes to make the most creative sculpture from toothpicks and Jelly Beans.

In the old business we had discussed having a few families doing a few shifts of the UCP Snowbiz Clean-up on January 26 and 27. Our tubing trip to the Badlands in Hudson will be on February 10; plan to meet at Fleet Farm at noon and eat before you come. Hailey made a motion for the Club to pay the full cost for any members that have paid their dues, Alana seconded the motion.

In new business we discussed the pancake breakfast at Applebee's on the 26<sup>th</sup> of January from 8-10am. The tickets are \$7 and all proceeds go towards youth going on trips. This year for demonstrations youth can tell about a project they have taken or will be taking to the fair this year. 8<sup>th</sup>-12<sup>th</sup> grade will present at the February meeting, 3<sup>rd</sup>-7<sup>th</sup> grade will be in March, and any new members or make ups will be done at the May meeting. Cole volunteered to organize a bowling activity. Brooke and Sophie volunteered to plan the minute-to-win-it games for the February meeting. Anna presented on her American Spirit trip to the East Coast where she met new people. Sydney gave her presentation about Space Camp in Alabama; she got to participate in space simulators and would recommend to anyone in 6<sup>th</sup> to 8<sup>th</sup> grade.

There is a YQCA meeting at the UWEX Office on February 2 for anyone planning on bringing animals to the fair. Our next 4-H meeting is on February 21 at the Pleasant Valley Community Center. Charlie made a motion to adjourn the meeting and Garrett D. seconded it; the meeting was adjourned at 7:42pm.

Respectfully submitted, Rachel Anderson



# Club Minutes

Truax Eagles Meeting Minutes January 15, 2019

Prior to meeting: Music for residents at Dove.

Opening question: What do you like to do in winter,

Secretary Report

Janelle Bain

Treasurer's Report

Elijah Velcek

Old Business:

Speech and Demonstration Report. Was on Jan 11th.

Motion to accept and second old business.

New Business:

Broomball is Jan 26 @ 1:00 pm at Roosevelt elementary school rink.

Next meeting is talent show at 5:30.

Valentine mailboxes for club members, A list of names will be coming out via email.

Dramafest and Art is March 9th in Menomonie see Cloverleaves.

Jan 29th to assign parts.

Practice at Lily Pad Lab-2524 Golf Road from 4-5

Motion to accept and second new business.

Announcements:

January 22nd Food Project Workshop at UW Extension Office. Register by Jan 19th to Extension Office.

Remember to sign up for your demonstration.

Meeting Adjourned

Birthdays

Guessing Jar

Demonstrations by Abigail, Sarah, Joel, and Keziah Hill

Read Cloverleaves at:

<http://eauclaire.uwex.edu.edu/clover-leaves-nesletter-2/>

Janelle Bain

Secretary



# Club Minutes

## Pleasant Valley Clovers—January Meeting

Before the meeting, Cyndi Kortbein led a project meeting on candle making. Then, each member got to make their own wax bead candle. Allison Duerkop also gave a demonstration about foods revue.

The meeting was called to order by Teresa and pledges were said. Roll call was taken by saying your favorite winter activity. The secretary's report was read and motion was made by Emma and seconded by Lindsay to accept the report. The treasurer's report was also given.

For old business, Allison, Laura, and Lindsay gave a report on tubing at Badlands Sno-Park. People were reminded and asked to help clean up Cleghorn park for Snowbiz. We decided to volunteer at Feed My People on Saturday, February 9th at 9 a.m. Moe's will confirm this and noted that the club must have at least ten people volunteer. Parent's Night was discussed and will take place on Sunday, February 17th at 4pm at the Community Center. The club decided to have a Taco Bar, which families will sign up to bring toppings, side dishes, or desserts. Motion was made by Katelynn and second by Lindsay for the club to pay for the taco meat. Fair donations were discussed. Motion was made by Ashlyn and seconded by Laura to donate \$1000 to the fair for new rabbit and poultry cages. Motion by Laura, seconded by Katelynn to donate \$50 for trophies for the fair. There was no other old business.

For new business, the club will revisit the idea of volunteering at the Lighthouse Youth Center at the next meeting. Moe's brought up idea of doing a club activity at the Glass Orchard. Members were

interested in the pendant, keychain, or magnet activity. Moe's will check to see if April 7th or 14th would work. Motion by Lindsay, seconded by Emma to pay \$13 of the cost for each member. The club was informed that Drama/Arts & Crafts/Photography festival is on March 9th. Five members at the meeting were interested in participating. Members were also reminded that anyone taking animals to the fair must complete the YQCA training. Upcoming March activities were mentioned. Kylee is in charge of Plant a Garden and Teresa is contacting the Humane Society. There was no other new business.

Youth leaders report was given by Kylee and Teresa. They discussed Pancake Breakfast on February 24th and after the meeting went jumping in Action City's trampoline park.

Leaders report was given and parents were informed that the Leader's association was looking for a new treasurer.

Motion by Katelynn and seconded by Lindsay to adjourn the meeting for snacks.

Submitted by Allison Duerkop



# Club Minutes

## Eau Claire Clovers January Meeting

The Eau Claire Clovers January meeting was held on January 20, at 4pm at the Good Shepherd Lutheran Church. Before the meeting started, we had an informational presentation from Nancy Coffey about the Market Match Program. A sheet was passed around to sign up for shifts. If you are interested in this program or have any questions, please contact Andy at the extension office. If you would like to learn more there will be a section in the clover leaves about the program. After the presentation we played a game of would you rather, led by the Skutley family. When our energizer was done Beth Berger called the meeting to order. The pledges were then led by Ben Skutley. Then we had attendance taken by Patricia Clark. After attendance Piper Munion handed out Birthday cards for the month. Next in the meeting Patricia Clark read the Secretary's report which was motioned to pass by Anna Skutley then 2<sup>nd</sup> by Hannah Klesmit. The spirit cup this month went to Julia Klesmit for coming to the Cloverbud meeting. We also had many new members at the meeting, so we went over what the spirit cup was and the guidelines. The treasure's report was read by Josie Syverson and then motioned to pass by Ben Skutley and then 2<sup>nd</sup> by Anna Skutley.

**Old Business:** We were reminded that space camp registration closed January 1. Ben and Anna Skutley talked about their experiences for bell ringing for the Salvation Army in December. The shooting sports meeting was on January 7. If anyone wants to join shooting sports or would like to get some more information about it, please contact Jen Berger. Ben then motioned to pass old business and Anna seconded it.

**New Business:** In new business Patricia Clark talked about what the butter braid sale is and why we do it. Each butter braid is \$13. Sales will start on February 17 and all orders are due March 3. All money we make goes towards trip scholarships and other activities run by the club. Some activities such as the February meeting to the trampoline park are still paid by families. Pickup for all orders will be at the Syverson's house from 4:45-5:30pm on March 13.

Patricia also then talked about doing another Feed my Food Bank community service project. It will be on February the 22 from 3-5pm. If there are over 15 people signed up, we will break up the two-hour shift into two 1-hour shifts. Ben and Anna shared their experience when volunteering at the food bank, which they said was really fun.

Josie talked about 4-H on the Air which will be in March sometime. There will be a Tri-County arts and crafts festival on March 9<sup>th</sup> which is a great way to get feedback from judges on projects before the fair. We were also updated by the Parkers with the club directory. New business was motioned to pass by Ben and 2<sup>nd</sup> by Anna.

### Announcements:

There will be a foods revue workshop on January 22 at 6pm

Josie talked about the flapjack breakfast on January 26 from 8-10am

Tickets are \$7, see Syverson family for more information

90% of sales will go to our OYCers going on trips this year

Beth talked about the Pizza Ranch fundraiser on February 6 from 4-8pm

10% of profits and all tips will go to our OYCers that are going on trips this year

Karla Geyen reminded us that our next meeting will be on February 17 at 2pm at Action City

Jumping will be at 3-5 and cost \$12 including socks

Pizza and Soda buffet will be served at 4:30 and to have some you must pay \$6

Josie talked about the Sarah Nelson Pancake Breakfast which will be on February 24

There will be a Food revue on March 3 at 2pm at the extension office

**Leaders Report:** In the leaders report we mostly talked about supporting friends of the fair and how much money we will be donating after we sell our butter braids

Then the meeting was motioned to be adjourned by Anna and 2 by Eva

**After the Meeting:** We had three demonstrations. One by Ben Skutley who did a presentation about the musical instrument the trombone. Anna Skutley did a demonstration on how to make pretzel bites. Last, but not Least, Arabella and Fylnn Lacy did a demonstration on how to make edible little acorn snacks. After all the demonstrations were done, we had samples of the butter braids to wrap up the meeting.



# Club Minutes

## Pleasant Valley's January Secretary Report

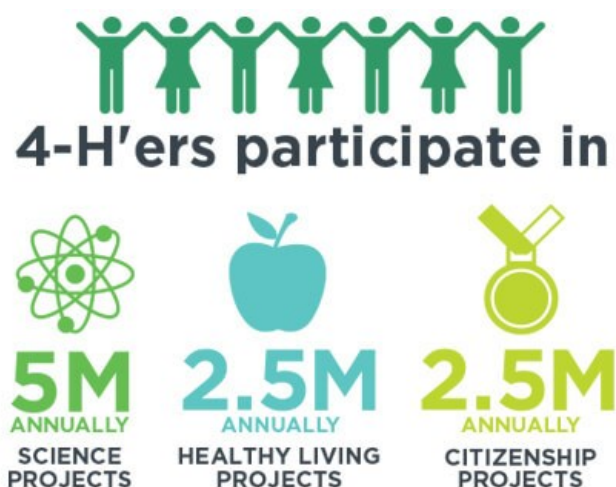
Our January meeting took place at the Cleghorn Community Center on January 17, 2019. Before the meeting, officers and a few club members gave demonstrations on projects they'd done before. The meeting was called to order at 6:50pm by our vice president Anna. Sophie led the pledges. Roll call was taken as members arrived. Karson and Nolan gave their presentation about the trip they took to Grand Island, Nebraska this past summer to participate in shotgun at the National Shooting Sports Championship. Connor read the treasurer's report and Rachel read the secretary report; Sydney made a motion to pass both and Dustin seconded the motion. Happy birthday to our members with January birthdays: Isabelle and Olivia R! We split into five groups to do our building with beans activity. Each group had ten minutes to make the most creative sculpture from toothpicks and Jelly Beans.

In the old business we had discussed having a few families doing a few shifts of the UCP Snowbiz Clean-up on January 26 and 27. Our tubing trip to the Badlands in Hudson will be on February 10; plan to meet at Fleet Farm at noon and eat before you come. Hailey made a motion for the Club to pay the full cost for any members that have paid their dues, Alana seconded the motion.

In new business we discussed the pancake breakfast at Applebee's on the 26<sup>th</sup> of January from 8-10am. The tickets are \$7 and all proceeds go towards youth going on trips. This year for demonstrations youth can tell about a project they have taken or will be taking to the fair this year. 8<sup>th</sup>-12<sup>th</sup> grade will present at the February meeting, 3<sup>rd</sup>-7<sup>th</sup> grade will be in March, and any new members or make ups will be done at the May meeting. Cole volunteered to organize a bowling activity. Brooke and Sophie volunteered to plan the minute-to-win-it games for the February meeting. Anna presented on her American Spirit trip to the East Coast where she met new people. Sydney gave her presentation about Space Camp in Alabama; she got to participate in space simulators and would recommend to anyone in 6<sup>th</sup> to 8<sup>th</sup> grade.

There is a YQCA meeting at the UWEX Office on February 2 for anyone planning on bringing animals to the fair. Our next 4-H meeting is on February 21 at the Pleasant Valley Community Center. Charlie made a motion to adjourn the meeting and Garrett D. seconded it; the meeting was adjourned at 7:42pm.

Respectfully submitted, Rachel Anderson



**2019 Tri-County  
4-H Arts & Crafts Festival  
Saturday, March 9, 2019  
Menomonie Middle School**

1. The 4-H Arts & Crafts program is open to all 4-H members.
2. Exhibits can be any original, creative art or craft project that is the result of a 4-H program. **NO SCHOOL PROJECTS ALLOWED!**
3. Each exhibit is to be labeled with NAME, COUNTY, CLUB, GRADE, ARTICLE, ART OR CRAFT, and AND MEDIUM USED FOR EXHIBIT before it is brought to the event. This is to be written on the enclosed labels. If club members need more labels, they are available at the Extension Office.
4. Any member can exhibit as many exhibits as they wish.
5. Only current work, done by the 4-H member since the 2018 Cultural Arts Festival, will be allowed.
6. **Definitions:**        Art – any original work  
                              Craft – items from a kit or that followed or used a pattern, directions, mold, commercial mold, picture, or example
7. **To be printed in the program**, all 4-H Arts & Crafts exhibits **MUST** be pre-registered by **Friday, February 22** on the club/member pre-entry form.
8. Each exhibitor in the Festival will receive a certificate of participation in recognition of their work. Awards of Excellence may be awarded base upon judges' discretion.
9. Up to two outstanding art items will be selected per county, to represent their county at next year's State 4-H Art Exhibition. Any items selected for the State Contest must be transportable to Madison during the State 4-H and Youth Conference.
10. All drawings and paintings are to be matted, framed, or mounted on tag board.
11. Any special accessories needed for display of an individual member's exhibit are to be supplied by the exhibitor.
12. 4-H members must bring their exhibit(s) to one of the evaluators between 8:30 a.m. to 10:30 a.m. Please stagger arrival times to avoid lines and waiting. Only when it is impossible for the member to attend will the committee allow someone else to bring their exhibit. The evaluators will go over these exhibits later.
13. No critique forms will be filled out due to face-to-face judging. You may want to take notes as the judge speaks with you.
14. Exhibits should be picked up and taken home at the end of the Drama Festival (around 2pm). No early removals, please.

**2019 TRI-COUNTY  
4-H ARTS AND CRAFTS FESTIVAL & CLUB HELP FORM**  
Due Friday, February 22 (Dunn County UWEX Office)

4-H Club \_\_\_\_\_ County \_\_\_\_\_

4-H Arts & Crafts Leader \_\_\_\_\_

Address \_\_\_\_\_ Telephone \_\_\_\_\_

**Help is needed at the Arts and Crafts Festival.** 4-H parents, adults and teen leaders are necessary to make this a successful event. Please check the shift(s) and list who is available to help host the arts and crafts area and to assist as needed.

*Please list names of helpers and check times they are willing to work at the Festival.  
Each club will need 2-3 helpers.*

Number of leaders/parents helping \_\_\_\_\_

**Names of Helpers**

**Time (circle preferred time)**

\_\_\_\_\_

8:00 a.m. - 10:00 a.m.

\_\_\_\_\_

10:00 a.m. - 12:00 p.m.

\_\_\_\_\_

2:00 p.m. - 4:00 p.m.,  
includes clean-up (everyone  
to help)

---

**2019 TRI-COUNTY  
4-H ARTS AND CRAFTS FESTIVAL  
4-H CLUB PRE-ENTRY FORM**  
Due Friday, February 22

Names of club members exhibiting arts and crafts (please alphabetize by member's last name)  
\*Please note: there will be no entry limit per member. Feel free to attach a document with your list.

Name	Member's Grade	Title or Description of Exhibit
------	----------------	---------------------------------

Return to: Dunn County UW-Extension, 3001 State Hwy. 12, East #102, Menomonie, WI 54751  
PHONE: 715-2321636



**4-H ARTS & CRAFTS FESTIVAL**  
(Exhibit Label)

NAME \_\_\_\_\_  
4-H CLUB \_\_\_\_\_  
ADDRESS \_\_\_\_\_  
CITY \_\_\_\_\_ ZIP \_\_\_\_\_  
COUNTY \_\_\_\_\_ GRADE \_\_\_\_\_  
CATEGORY (CIRCLE ONE)  
ART CRAFT  
MEDIUM USED \_\_\_\_\_  
TITLE/DESCRIPTION \_\_\_\_\_  
\_\_\_\_\_

**4-H ARTS & CRAFTS FESTIVAL**  
(Exhibit Label)

NAME \_\_\_\_\_  
4-H CLUB \_\_\_\_\_  
ADDRESS \_\_\_\_\_  
CITY \_\_\_\_\_ ZIP \_\_\_\_\_  
COUNTY \_\_\_\_\_ GRADE \_\_\_\_\_  
CATEGORY (CIRCLE ONE)  
ART CRAFT  
MEDIUM USED \_\_\_\_\_  
TITLE/DESCRIPTION \_\_\_\_\_  
\_\_\_\_\_

**4-H ARTS & CRAFTS FESTIVAL**  
(Exhibit Label)

NAME \_\_\_\_\_  
4-H CLUB \_\_\_\_\_  
ADDRESS \_\_\_\_\_  
CITY \_\_\_\_\_ ZIP \_\_\_\_\_  
COUNTY \_\_\_\_\_ GRADE \_\_\_\_\_  
CATEGORY (CIRCLE ONE)  
ART CRAFT  
MEDIUM USED \_\_\_\_\_  
TITLE/DESCRIPTION \_\_\_\_\_  
\_\_\_\_\_

**4-H ARTS & CRAFTS FESTIVAL**  
(Exhibit Label)

NAME \_\_\_\_\_  
4-H CLUB \_\_\_\_\_  
ADDRESS \_\_\_\_\_  
CITY \_\_\_\_\_ ZIP \_\_\_\_\_  
COUNTY \_\_\_\_\_ GRADE \_\_\_\_\_  
CATEGORY (CIRCLE ONE)  
ART CRAFT  
MEDIUM USED \_\_\_\_\_  
TITLE/DESCRIPTION \_\_\_\_\_  
\_\_\_\_\_

**4-H ARTS & CRAFTS FESTIVAL**  
(Exhibit Label)

NAME \_\_\_\_\_  
4-H CLUB \_\_\_\_\_  
ADDRESS \_\_\_\_\_  
CITY \_\_\_\_\_ ZIP \_\_\_\_\_  
COUNTY \_\_\_\_\_ GRADE \_\_\_\_\_  
CATEGORY (CIRCLE ONE)  
ART CRAFT  
MEDIUM USED \_\_\_\_\_  
TITLE/DESCRIPTION \_\_\_\_\_  
\_\_\_\_\_

**4-H ARTS & CRAFTS FESTIVAL**  
(Exhibit Label)

NAME \_\_\_\_\_  
4-H CLUB \_\_\_\_\_  
ADDRESS \_\_\_\_\_  
CITY \_\_\_\_\_ ZIP \_\_\_\_\_  
COUNTY \_\_\_\_\_ GRADE \_\_\_\_\_  
CATEGORY (CIRCLE ONE)  
ART CRAFT  
MEDIUM USED \_\_\_\_\_  
TITLE/DESCRIPTION \_\_\_\_\_  
\_\_\_\_\_

**2019 TRI-COUNTY  
4-H DRAMA FESTIVAL  
SATURDAY, March 9, 2019  
Menomonie Middle School**

ALL plays must be registered at the Dunn County Extension Office by Friday, February 22. Telephone registrations will NOT be accepted.

A set of rules for our festival follow.

1. **Entry Division and Length of Performances:** The difference between the two drama categories is as follows:
  - a. *On-Stage Drama* is a traditional one-act play using full costumes, props and sets. This will be performed on a stage without curtains in the Middle School Gymnasium. Please adjust your play accordingly.
    1. One play, any length up to 30 minutes, including set-up and take-down time. It is suggested that performances be about 20 minutes in length.
    2. Performances must include two or more actors.
    3. Any props that touch the floor should have felt on them to protect the floor and to dampen sound.
  - b. *Mini-Dramas and Skits* can be performed at or in any place (*setting*) and might include puppetry, creative dramatics, etc. No stage or lighting will be provided. Performances must include two or more actors.
    1. *Mini-dramas* may use costumes and props similar to on-stage drama performances
    2. *Skits* use minimal props and costumes (*less is better*)
    3. Mini drama and skit performances can be any length up to 15 minutes, including set-up and take-down time. Make sure your skit or mini-drama is within these time guidelines.
  - c. *Puppetry* – can be up to 15 minutes and provide own puppet stage.
2. All actors must be 4-H members. The director(s) may be any 4-H member(s) and/or adult(s).
3. Stage lighting may not be available, due to the facilities (mini-drama and skits – no stage or lighting provided).

4. On-Stage Drama Props: Drama groups should plan for special props and sound effects equipment as needed. Any props need to have felt on the bottom to avoid scratching the stage.
5. No hay or straw bales, animals, candles, real fire or real weapons are allowed.
6. If a club uses fake weaponry or strobe lights, it must be noted on the registration form.
7. Clubs may have more than one entry, but a 4-H member can be involved in only one play.
8. The Drama Festival staff will have a Stage Manager/Emcee who will introduce the Club and the Club's Emcee. The Club's Emcee will be expected to introduce the play and set the scene for their play. Introduction of cast used at club's discretion. This will not be timed.
9. Your presentation must not be the same one your club presented last year.
10. Music plays (*NOT* reviews), where music is used as part of the play, are acceptable.
11. Each group will receive a critique from the evaluators. Each drama participant will receive a participation ribbon and certificate. Clubs will be rated gold or silver.
12. Each entry will be given an "Award of Merit" for their area of outstanding achievement. The awards will be given from the following categories:
  - Total Voice Projection
  - Cooperation, Enthusiasm and Spirit
  - Characterization
  - Creative Costuming
  - Audience Appeal
  - Creative Theme Development
  - Set
  - Humor
13. Individual awards for outstanding youth performers will be presented, not to exceed two youth per play.
14. Best Actor and Best Actress will be selected from each county.

#### **Other helpful information**

**Evaluation Form:** Upon your request, the committee will send an evaluation form that will be used at the festival. It notes the essential parts for viewing and critiquing a dramatic performance, and will be your copy for study prior to the play.

**ENTRY BLANK**  
**2019 TRI-COUNTY**  
**4-H DRAMA FESTIVAL**

RETURN BY FRIDAY, FEBRUARY 22 (DUNN COUNTY UW-EXTENSION OFFICE)

*Please print clearly or type:*

Name of Club \_\_\_\_\_ County \_\_\_\_\_

Club Advisor \_\_\_\_\_

Director's Name \_\_\_\_\_ Telephone \_\_\_\_\_

Director's Address \_\_\_\_\_

Name of Play \_\_\_\_\_

Name of Emcee \_\_\_\_\_

**Check Entry Division:**

Maximum Total Time (includes set-up and take-down time)

\_\_\_\_ On-Stage Drama 30 minutes

\_\_\_\_ Mini Drama 15 minutes

\_\_\_\_ Skit 15 minutes

\_\_\_\_ Puppetry 15 minutes

Length of your group's performance: \_\_\_\_\_ minutes

\_\_\_\_ Yes      \_\_\_\_ No      This play uses fake weaponry.

\_\_\_\_ Yes      \_\_\_\_ No      This play uses a strobe light.

**Check performance time preference:**

\_\_\_\_ early morning      \_\_\_\_ mid-morning      \_\_\_\_ late morning

\_\_\_\_ early afternoon      \_\_\_\_ mid-afternoon      \_\_\_\_ late afternoon

There will be no practice times available for 2019. Please do not contact the Menomonie Middle School for times. We will have a simple room set aside for a run through prior to your performance.

List cast and characters portrayed, to be printed in program. Use back of sheet if necessary. Don't forget other 4-H members with props, scenery, etc. *Please print clearly, or attach a typed list.*

**4-H MEMBER**

**CHARACTER**

Return to:      Dunn County UW-Extension, 3001 State Hwy. 12, East #102, Menomonie, WI 54751  
PHONE: 715-2321636

[OVER FOR MORE CAST AND CHARACTERS, AS NEEDED]



4-H MEMBER

CHARACTER

# **2019 Tri-County 4-H Photography Festival**

**Saturday, March 9, 2019  
Menomonie Middle School**

## **4-H Photography Festival Rules**

1. Any 4-H member may enter photographs at the County Festival. 4-H members enrolled in the Photography Project are especially encouraged to exhibit their work.
2. Each exhibit is to be labeled with exhibitor's **NAME, COUNTY, CLUB, GRADE IN SCHOOL, TITLE/DESCRIPTION OF EXHIBIT** before it is brought to the festival. This is to be written on a 3" x 5" index card. No other exhibit labels will be used.
3. To be printed in the program, all photo pre-entries must be pre-registered by Friday, February 22 by 4:30 p.m.
4. Only current work, done by the 4-H member since the 2018 Cultural Arts Festival, will be allowed.
5. There is no size limitation on photographs, but enlargements are encouraged.
6. Single photos ONLY. Photos may be matted or un-matted. (If you plan to mat use only one photo per mat). Photos must NOT be framed.
7. Each exhibitor in the Festival will receive a participation ribbon in recognition of their work. Awards of Excellence may be awarded base upon judges' discretion.
8. 4-H members must bring their exhibit(s) to one of the evaluators between 8:30 a.m. and 10:30 a.m. Please stagger arrival times to avoid lines and waiting. Only when it is impossible for the member to attend will the committee allow someone else to bring the exhibit. The evaluators will go over these entries later.
9. **Chippewa and Dunn County Only:** Up to three outstanding photos will be selected, at the 4-H Photography Festival, to represent Chippewa and Dunn County at next year's State 4-H Photography Contest. Any photos selected for the State Contest must be from film, slides or digital image. Eau Claire County will select state fair photos at the county fair.
10. Exhibits should be picked up and taken home at the end of the Drama Festival (around 2:00 pm). No early removals, please
11. The 4-H Photography Festival needs leaders/parents from each club to help with the day's program. If you can volunteer some time to help, please contact the Extension Office.

**2019 TRI-COUNTY  
4-H PHOTOGRAPHY FESTIVAL  
CLUB/MEMBER REGISTRATION FORM**

In order to help plan this year's exhibit, and to print a photography program, **all photo entries must be pre-registered by Friday, February 22.** Clubs are encouraged to send in one form for all club participants, but this is not required. Thanks for your help with this task!

4-H Club \_\_\_\_\_ County \_\_\_\_\_

Leader/Parent submitting form: \_\_\_\_\_ Telephone \_\_\_\_\_

Number of members exhibiting photos \_\_\_\_\_

Name(s) of club member(s) exhibiting - **please alphabetize by last name**

<i>Name</i>	<i>Member's Grade</i>	<i>Title/Description of Photo</i>
-------------	-----------------------	-----------------------------------

Return to:      Dunn County UW-Extension Office  
                     3001 State Hwy. 12, East #102, Menomonie, WI 54751  
                     PHONE: 715-232-1636

**MILWAUKEE COUTY HORSE/HORSELSS CLUB  
2019 OPEN (for adults) & YOUTH MODEL SHOWS**

<b>When</b>	<b>Where</b>
Saturday January 26,2019	Gonzaga Hall
Doors open at 7:45am	1441 So 92 <sup>nd</sup> ST
Judging starts at 9:00am	West Allis, WI 53214

**DIRECTIONS:** From South & North exit Greenfield Ave head East till 92<sup>nd</sup> ST turn right  
From East & West exit 84<sup>th</sup> ST go South till Greenfield Ave, turn right, & right on 92<sup>nd</sup> ST. Park  
in school parking lot.

**Show secretary:** Char Ehlert (cell 414- 315- 0169)

Please mail pre-registrations & questions to 310 E Evandale Dr, Oak Creek, WI 53154. Make  
checks payable to Milw. Co. Horse/Horseless Club. Please state whether you will be  
competing in the open or youth show. Checks will not be cashed until after the show, but  
needs to be postmarked by January 20 for the cheaper rate.

**Seating Chart:** (Do not attempt to change names on table assigned tables). There will be a  
seating chart and assigned tables. If there is someone you prefer to be next to, please specify  
when registering. Check seating chart at show to locate your assigned table.

**Model identification:** All models must bear a tag on a hind leg stating horse's breed & gender  
on 1 side & horse's name & exhibitor's 3 initials on the other. Please indicate what initials you  
will be using when registering for the show.

**ALL JUDGES DECISIONS ARE FINAL. BAD SPORTSMANSHIP WILL RESULT IN DISMISSAL &  
FORFIETURE OF SHOW FEES.**

**Liability:** Milwaukee County Horse/Horseless Club, Gonzaga Hall & St Aloysius Parish are not  
responsible for theft, injuries or accidents to exhibitors or models. **ENTER AT YOUR OWN  
RISK.** Please be careful around tables & **DO NOT HANDLE OTHERS' MODELS WITHOUT  
PERMISSION.**



## HALTER CLASS RULES

- 1) No props allowed.
- 2) Please lay down tippy models on a small cloth for judging. (It is then assumed that the judge may pick up the model to examine the other side.
- 3) Once a model has been shown in a halter class, it may not be shown in another.
- 4) In breed classes, models are judged based on conformation, breed, assignment, & condition.
  - a) Stock type (including Stock type Mustangs)
  - b) Part Arab (including NSH, Morab, Quarb, ect).
  - c) Other Pure Spanish Breeds ( including Lipizzanns, Spanish Mustangs, Criollo, Llanero, Manga, Larga, ect.)
  - d) Other mixed Spanish type breeds ( including Warlanders, Spanish-Norman, ect.)
  - e) Other Pure/Mixed Pony Breeds (including Miniatures)
- 5) If a model's assigned breed or color is rare **you must** provide appropriate documentation to support the assigned. Please limit your documentation to no more than 1 8 ½" x 11" paper. ( Make **photocopies** as necessary & be sure to note your source(s) but **don't** have an open book on the judging table as your documentation.)
- 6) In collectability classes, models will be judged on collectability & condition.
- 7) All models entered in halter collectability classes must have a card (no larger than 3" x 5") listing pertinent collectability information. Failure to provide the card will result in the model being disqualified from collectability, but not from breed judging.

## PERFORMANCE CLASS RULES:

- 1) Provide an explanation with **all** performance entries, except for basic pleasure classes.
- 2) Tag model to be considered for judging. All other models will be considered props.
- 3) There will be a time limit of 10 minutes for set up between all performance classes.
- 4) Each performance entry must fit into an 18"x30" space. (That's the maximum size allowed at NAN.)
- 5) Costume & Western Pleasure classes **will not** be allowed props. All other performance classes will be allowed props.

EXHIBITORS who register postmarked before January 20 will pay \$8.50 for a half table (3 ft.) or \$11.50 thereafter. There will also be an additional fee of \$.50 per model per class. You can pre-register & pre-pay by specifying how many classes you are planning to enter & your packet will be ready for you at the door. (You can add more classes then & if you buy too many I will buy them back.)

**Awards:** Each class will be awarded up to 10<sup>th</sup> place. 2 high point awards will be awarded for each division. Divisions that will be in ring 1 are junior, novice (never won a championship) & therapeutic. Division that will show in ring 2 are senior, 6 years or less experience (can have won a championship) & open fun show. **All exhibitors are responsible for MAKING SURE THAT THEIR HORSES ARE LISTED ON THE HIGH POINT SHEET PROVIDED IN THE SHOW PACKET & FOR MAKING SURE THEY ARE TURNED IN BEFORE THE HORSES START SHOWING.** If showing in 2 or more divisions, make a copy for each (you're age & if qualified as a novice or 6 years or less.)

**Youth Show- definition age eligibility:** Age for Youth Exhibitors as of January 1: Jr- 12 years old and under, senior 13 – 19 years old, novice- 3 years or less of experience and never won a championship. 6 years or less experience can have won a championship.  
**Open fun & therapeutic ANY AGE**

**Custom (CM) Youth:** Models may have been customized by professional unless specified (classes done by exhibitor.) Cm can show in performance classes.

**Performance Classes:** May use purchased tack except for Tack made by classes ( 1,2, 6,9,14,21,34,37,42,45,49,54,57,70 ) A 5 minute time limit will be enforced between classes. SHOWMANSHIP MODELS must wear appropriate tack.

**Halter Breed classes:** OF plastic. Resin (R) classes. Custom (CM) can be bought.

**Tack changes:** A 5 minutes tack changes allowed; show secretary must be notified 2 classes prior to requested tack changes.

Ring 1 JR (12 & under) & Novice (3 or less experience NEVER to win a Championship) therapeutic

Ring 2 Sr 13- 19 & 6 years or less Experience Could have won a championship, open fun show, Resin & Custom halter collector classes

## MILWAUKEE COUNTY HORSE/HORSELESS 4-H PROJECT

### YOUTH SHOW

#### NOVICE 3 YRS OR LESS EXPERIENCE NEVER WON CHAMPIONSHIP

##### RING 1 JR & a Novice B therapeutic

- 1 Harness made by
- 3 Harness
- 5 Driving Horse w/cart
- 7 a/b Novice Harness
- 9 Western tack made by
- 11 Western Pleasure
- 13 a/b Novice Western Pleasure
- 15 Ranch Work
- 17 Trail
- 19 Gymkhana
- 21 English Tack made by
- 23 Hunter/Jumper(jump required)
- 25 Huntseat Pleasure
- 27 a/b Novice Huntseat Pleasure
- 29 Dressage
- 31 Saddleseat
- 33 a/b Novice Saddleseat
- 35 Costume
- 37 Costume made by
- 39 a/b Novice Costume
- 41 Other Performance
- 43 Jr Showmanship w/doll
- 45 SHOWMANSHIP CHALLENGE**
- 47 Draft halter made by
- 47 a/b Draft
- 49 Stock halter made by
- 51 a/b Quarter Horse

- Halter (a) with halter
- (b) w/o halter can cross enter

##### Ring 2 Sr & 6 yrs experience could have won championship, open fun show same show bill as Sr Custom, resin & collector classes

- 2 Draft halter made by
- 4 a/b Draft
- 6 Stock halter made by
- 8 a/b Quarter Horse
- 10 a/b Paint
- 12 a/b Appaloosa
- 14 English head gear made by
- 16 a/b Arabian
- 18 a/b ½ Arab
- 20 a/b Morgan
- 22 a/b Thoroughbreds
- 24 a/b Gaited
- 26 a/b Sport type
- 28 a/b Pony
- 30 a/b foals
- 32 a/b Other breeds
- 34 Harness made by
- 36 Harness
- 38 Driving Horse w/cart
- 40 6 yrs Harness
- 42 Western tack made by
- 44 Western Pleasure
- 46 6 yrs Western Pleasure
- 48 Ranch Work
- 50 Trail
- 52 Gymkhana

### Youth show ` cont.

53 a/b Paint  
55 a/b Appaloosa  
57 English headgear made by  
59 a/b Arabrain  
61 a/b ½ Arab  
63 a/b Morgan  
65 a/b Thoroughbred  
67 a/b Gaited  
69 a/b Sport type  
71 a/b Pony  
73 a/b Foal  
75 a/b Other Breed  
77 a/b Cm by Jr

54 English Tack made by  
56 Hunter/Jumper (jump required)  
58 Huntseat Pleasure  
60 6 Yrs Huntseat Pleasure  
62 Dressage  
64 Saddleseat Pleasure  
66 6yr Saddleseat Pleasure  
68 Costume  
70 Costume made by  
72 6 yr Costume  
74 Other Performance  
76 Sr Showmanship w/doll  
77 a/b 6 yrs Halter

### Resins

78 R Draft breed  
79 R Stock breed  
80 R Light breed  
81 R Pony breed  
82 R Foals

### Custom CM

83 CM Draft breed  
84 CM Stock breed  
85 CM Light Breed  
86 CM Pony Breed  
87 CM Foals  
88 CM by Sr

- 89 showmanship challenge will be an extra showmanship judged when regular showmanship is done
- 90 best loved model & why is it your favorite



MILWAUKEE COUNTY MODEL HIGH POINT SHEET- Please make a copy if you are in 2 or more divisions or if you have more horses than can fit on the sheet. Circle the division(s) you are in.

Jr is 12 yrs & under; Sr 13-19; 6 yrs or less experience could have championship  
OPEN FUN SHOW ADULTS USES SAME SHOWBILL AS SR

NOVICE 3 YEARS OR LESS NEVER HAVE WON A CHAMPIONSHIP therapeutic

Name

Address

Email

Horses name

Office space

1

2

3

4

5

6

7

8

9

10

11

12

13

Eau Claire County 4-H Older Youth Council  
Educational Experiences Money Request Form

Name: \_\_\_\_\_ Today's Date: \_\_\_\_\_

Trip requesting money for (check one)

- ☐ Madison Youth Conference ( \_\_7th Grade \_\_8th grade)
- ☐ Interstate Exchange
- ☐ American Spirit
- ☐ Citizen Washington Focus
- ☐ National 4-H Congress
- ☐ National 4-H Conference
- ☐ State Arts Team
- ☐ State Drama Company
- ☐ State Communications Team
- ☐ Space Camp
- ☐ Wisconsin Leadership Council (WLC)

How many OYC meetings have you attended this year? \_\_\_\_\_

Which committees have you served on this year?

\_\_\_ Interview Clinic  
\_\_\_ Haunted Barn  
\_\_\_ Winter Parade  
\_\_\_ Pancake Breakfast  
\_\_\_ Relay for Life  
\_\_\_ Fair Committee  
\_\_\_ Other: \_\_\_\_\_

Are you committed to working at least 8 hours in the Dairy Shack this year at the fair?

\_\_\_ yes  
\_\_\_ no (please explain: \_\_\_\_\_)

It is crucial that you present to OYC in asking for money before your trip. If you don't make a request to OYC, you will not be awarded any money. It is also required that you give a presentation to OYC or to your club after you go on your trip sharing your experiences.

Signature: \_\_\_\_\_

Revised: 1-3-18