

# Clover Leaves



**Extension**  
UNIVERSITY OF WISCONSIN-MADISON  
EAU CLAIRE COUNTY

## Eau Claire County's 4-H Newsletter



*4-H is a community of young people across America who are learning leadership, citizenship, and life skills.*

Hello 4-H families!

Spring is sprung! I've got my seeds started in my basement. They are growing nicely and I am ready to start digging in the dirt and planting things. I remember that the seeds that I plant now will bear fruit that I will savor when summer rolls around.

This is similar to the work that we put into planning for the year. Much of the planning that I'm doing now is for programming in the summer. I have several programs developed in partnership with the Eau Claire Area School District. We will be providing several baking classes, model rockets, and introduction to fiber arts. And, we are in the process of interviewing Summer Camp Counselors. We have 15 applicants. Thank you to everyone who has supported these young people in their applications.

Those interviews have been the highlight of my week. What a thoughtful group of young people that have applied to join us in whatever camp may look like this year. We have been very deliberate in discussing the fact that camp will be different. We don't know if we will be at Beaver Creek for an overnight camp or at Pleasant Valley Community Center for a series of day camps. Here are what some people have shared when we ask them how they are feeling about camp, "I am excited to mix new kinds of people and help create new bonds between campers and create new activities and programs to evolve the camp." "...I'm excited to do something new and exciting..." "There are a lot of hoops to jump through with having camp this year. I think there will be a lot of hits and misses, but in the end, we can create a successful summer camp that will make others want to come back with more friends next year." Please make plans to join us in whatever camp looks like this

I hope that you are planting your seeds-whether figurative or literal ones. If I can support you in any way, please let me know.

All the Best,

An EEO/AA employer, University of Wisconsin-Madison Division of Extension provides equal opportunities in employment and programming, including Title VI, Title IX, the Americans with Disabilities Act (ADA) and Section 504 of the Rehabilitation Act

## April 2021

### In this issue

Project Information Facebook	2
Calendar, Leaders Association News	3
4-H On the Air Schedule Broadband Test	4
4-H Drama Games & Readers Theater	5
Karl Petersen Competitive Shoot	6
Exploring 4-H for New Families	7-8
Foods Revue Registration	9
Virtual Fitness Club	10
Virtual Learning Community Opportunities	11-12
Blue Ribbon Scholarship	13
Competitive Edge Scholarship	14
Livestock Lessons	15-16
YQCA Information	17-19
All About Poultry	20
Managerial Papers	21-23
Livestock Educ Programming Friends of the Fair Raffle	24
NSC Livestock Shows	25
Fair Supt Needed-Plant/Soil Livestock Educ Program	26
Friends of the Fair Information	27-28
EC County Fair Information	29
Club Minutes	30-34
EC County Fair Sponsorship	35-37

**Does your club or project group  
have a Facebook page?**

Let us know about it so Extension can be a fan. Be sure your club/project “likes” [EC County UWEX](#)—let us help each other get the word out!

**New to 4-H this year?**

Be sure to “like” [Eau Claire County UW-Extension](#), and the [Expo Center](#), on Facebook to stay current of 4-H and Fair info!

AND

Add “[Extension Rachel](#)” to your friends.



## Project Literature

### Need 4-H publication materials?

EC County 4-H’s Publication Library just grew! In addition to materials for the many projects we already had, we just received publications on the following project areas:

- |                    |                                    |             |
|--------------------|------------------------------------|-------------|
| + Adult Leadership | + Science: Wind Power and Robotics | + Health    |
| + Service Learning | + Celebrate Art                    | + Aerospace |
| + Scale Models     | + Photography                      | + Horses    |
| + Theatre Arts     | + Sewing                           | + Rabbits   |

See the full library list here: “[Project Literature Library](#)”. Come to the Extension Office to check-out materials for a month, free!

If you are a **club officer**: we have publications to help you better understand your duties! Contact the Extension Office to borrow them.

Looking for **Cloverbud** materials? Contact the Extension Office.

You can always purchase your own items at

[www.4hmall.org](http://www.4hmall.org)

**Eau Claire County Extension Office**  
227 1st Street West  
Altoona, WI 54720

Phone: (715) 839-4712

Fax: (715) 839-6277

Website: [eauclaire.extension.wisc.edu](http://eauclaire.extension.wisc.edu)

Facebook: [facebook.com/  
extensioneauclairecounty](https://facebook.com/extensioneauclairecounty)

Instagram: [eccounty4hambassadors](#)

Snapchat: [eccounty4hambassadors](#)

### CLUBS!

Submit the minutes from your last meeting for admission in the *Clover Leaves* so your members can see the highlights and other clubs can see your good example!

**Email to Andy by the 20th of each month.**

[Andy.Heren@co.eau-claire.wi.us](mailto:Andy.Heren@co.eau-claire.wi.us)

## Calendar

March 16-April 20: Tuesdays, 6:30-7:30PM,  
STEM Mini camp

April 1-April 29: Thursdays, 6:30-8:00PM,  
Digging Deeper into 4-H

April 13: Annual Leader Training (in person, at  
the Extension Office)

May 16: Foods Revue, 1:00PM

May 20: Choose Your Fabric/Choose your  
accessories workshop, 6:30PM

June 24: Clothing Revue, 6:30PM

*For more available programming, please see the  
Virtual Learning Community Page: [Virtual Learning  
Community – Wisconsin 4-H](#) or check out “Events” in 4Honline*



## News for Leaders

The safety guidelines for meeting in person April 1-June 1 are the following:

- no more than 30% capacity in an indoor space & up to 50 people at one time indoors
- pods (groups) of 20 can move through activities together (some exceptions apply to needing groups. Talk to Rachel to plan your meetings if you want in person options.)
- No eating indoors
- Groups separated into groups of 20 and up to 150 people can meet outside

Meeting in person still requires approval from Rachel. See [4-H FAQs Related to COVID-19 – Wisconsin 4-H](#) for the FAQ and latest program guidance. ([www.4h.extension.wisc.edu/4-h-faqs-related-to-covid-19](http://www.4h.extension.wisc.edu/4-h-faqs-related-to-covid-19))

## Leaders

### Eau Claire County 4-H Leaders Association

**May 11, 2021  
6:30 PM**

### Agenda Items:

- 2021-2022 Budget Approval
- Plat Books
- Summer Camp
- Food Stand
- Farm Tech Volunteering
- Eau Claire County Fair

Join Zoom Meeting

<https://uwmadison.zoom.us/j/91034687970?pwd=U0xSeG1EVzRKcytleXlNdEFxd09sQT09>

Meeting ID: 910 3468 7970

Passcode: 4HRocks!

One tap mobile

+13017158592,,91034687970# US (Washington DC)

+13126266799,,91034687970# US (Chicago)

## 4-H On the Air Schedule



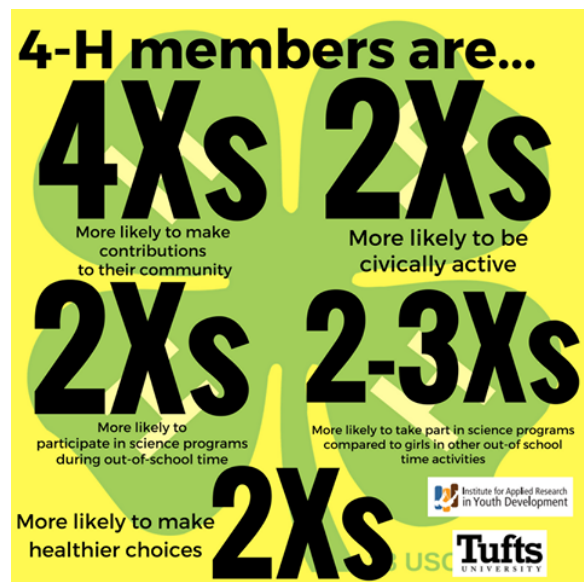
Club leaders! It's time to reserve a month for your club to do 4-H On the Air! Eau Claire County is the first Saturday of the month,

Please contact Andy at the Extension office by calling 715-839-4712 or email [Andy.Heren@co.eau-claire.wi.us](mailto:Andy.Heren@co.eau-claire.wi.us) to reserve your month. We will need the club name, contact person, and phone number and email.

Thanks!

### 1st Saturday Of The Month

Month	Club	Contact
<b>April</b>	Pleasant Hill Go Getters	Jodi Thesing-Ritter
<b>May</b>	Maple Drive Boosters	Lisa Roettger
<b>June</b>	Russell Corner Badgers	Jill Welke
<b>July</b>	Pleasant Valley Clovers	Wendy Duerkop
<b>August</b>	Rodell Busy Bees	Amanda Robinson
<b>September</b>	Eau Claire Adventurers	Amy Hahn
<b>October</b>	Pleasant Hill Go Getters	Jodi Thesing-Ritter
<b>November</b>	Little Red Cardinals	Penny Helwig
<b>December</b>	Pleasant Valley	Heather Iverson



## Broadband Test

In partnership with [Measurement Lab](#), the DPI invites residents to test their home internet speeds [using M-Lab's speed test](#). Data produced by the test provides broadband planning groups additional information to target improvements where internet performance is poor.

"By simply taking a few seconds to test their internet speed, Wisconsinites can help us close the digital equity gap in our state," said DPI Assistant State Superintendent of the Division for Libraries and Technology Kurt Kiefer, a member of the [Governor's Task Force on Broadband Access](#). "The data will help determine where improvements to internet need to be made and is essential to ensuring high-quality learning for all children."

# 4-H Drama Games and Readers Theater Get Together!

Hey 4-H Drama fans! We know that this virus thing has been SUPER hard on your creative minds and energy. Pierce County 4-H is inviting you to join in with our new TAAL group (Theater Arts Activity Leaders) who have put together some awesome drama games and readers theater selections.

Here's the scoop:

**WHAT:** Two opportunities, one Zoom and one in-person to get together and do drama games as well as practice a cool readers theater piece. Plus, a readers theater performance night on Zoom!

**FOR WHOM:** 4-H youth and adults in any grade interested in and longing to DO some DRAMA games together and real acting with a readers theater script

**WHERE:** On Zoom and also an in-person session at the Hoffman Park Outdoor Shelter in River Falls (attend one or both)

**WHEN:** Thursday, April 15 from 7-8 p.m. on Zoom and/or Saturday, April 17 at Hoffman Park in River Falls from 10-11 a.m. (attend one or both sessions). For those doing the readers theater, your groups will also have a special Zoom performance time set aside on Saturday, April 17, curtain is at 7 p.m. sharp!

Please register ahead of time so that we know who to expect, there is no participation fee, we just want to promote 4-H Theater Arts with you, together, for some great learning and dramatic fun! Register by Monday, April 12 using your 4-H Online account. It's listed under Events.

Thanks,  
Frank

Frank Ginther, Professor of Youth Development  
Pierce County 4-H Youth Development Agent  
Chair, Committee of Professors-Department of Extension Faculty

432 West Main Street, Box 69  
Ellsworth, WI 54011-0069  
Phone: 715-273-6781  
FAX: 715-273-6859  
E-mail: [francis.ginther@wisc.edu](mailto:francis.ginther@wisc.edu)

# Karl Petersen Competitive Shoot

Eau Claire County 4-H Invitational Shoot

7<sup>th</sup> Annual Event

National Qualifying Event



## Eau Claire County



## Shooting Sports Invitational

**Saturday, April 24th, 2021**

Check-in Starts at 7:30am

Ranges Open at 8:00am

**Mondovi Conservation Club**

W450 Youth Road

Mondovi, WI 54755

### Disciplines:

.117 Air Rifle (Three-Position and Silhouettes)

.117 Air Pistol (Slow Fire/Rapid Fire)

Archery (300 Round & 3-D Animal Round, Compound and Recurve)

Wildlife Ecology

### Shoot Directors' Contacts:

Darren Schlewitz – (715) 456-6117, [schlaysows@wwt.net](mailto:schlaysows@wwt.net), Air Rifle

Jim Stone – (715) 271-2854, [jstone2854@gmail.com](mailto:jstone2854@gmail.com), Archery

### Registration Deadline: April 16<sup>th</sup>

\*\*\*Online Registration- Register at [www.ecshootingsports.weebly.com](http://www.ecshootingsports.weebly.com) \*\*\*

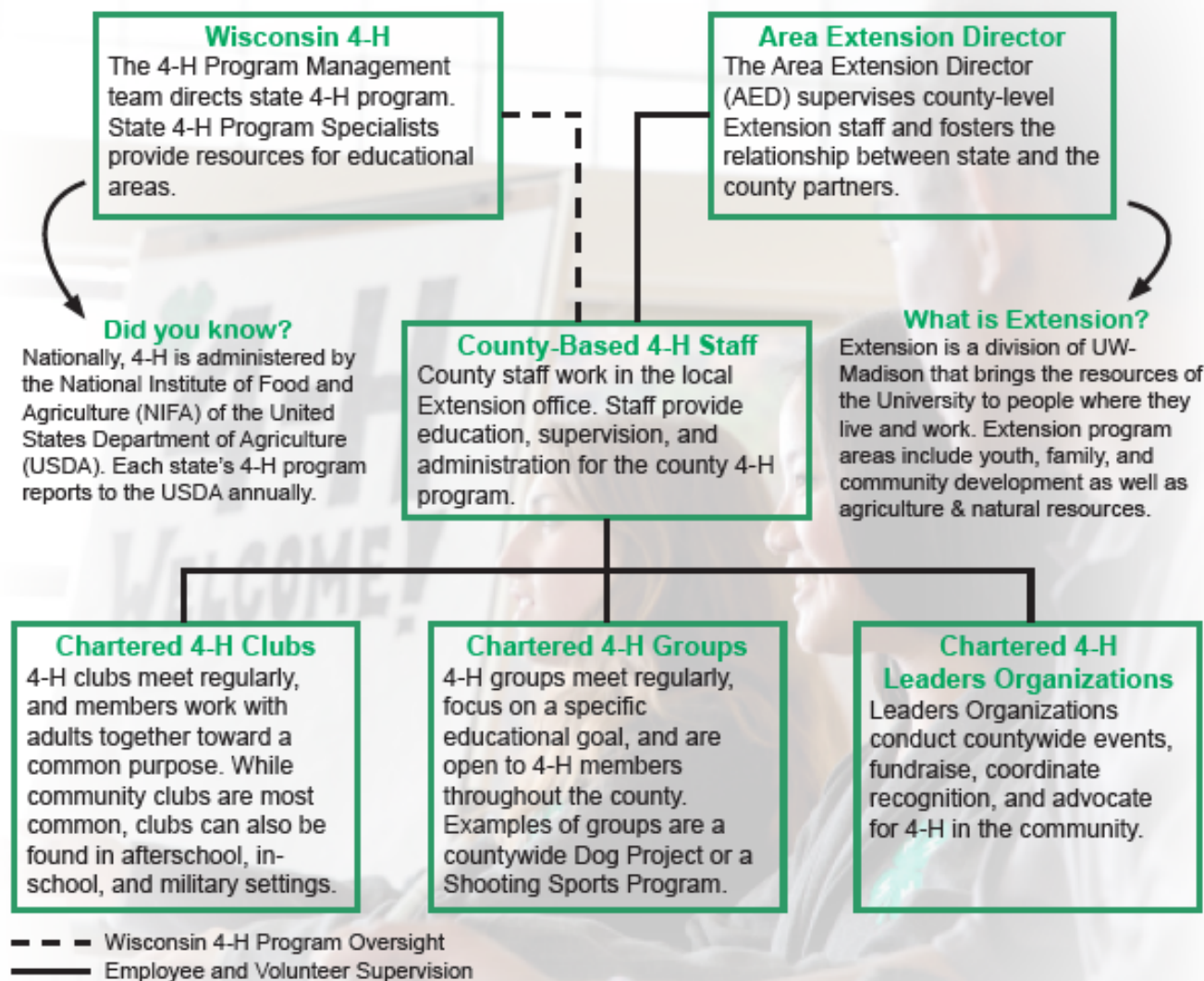
Bring payment on the day of the shoot!





## Beyond the Club

You're a part of something big! 4-H is the nation's largest youth development organization, with more than 6 million members and over 90,000 clubs. Because of how big 4-H is, it can be hard to understand where you (and everyone else) fits into the greater scope of 4-H from a state and national level.



### Where do I fit?

Most members get their start with a 4-H club. If your child wants to get more involved with 4-H beyond the club level, check with your club leader or your county-based 4-H staff to learn about additional 4-H opportunities. Getting involved with your county's groups or the Leaders Organization can be great ways to connect with new opportunities.



Have a minute? Please provide feedback by filling out this [5-question survey](#)





## YOUTH Matter!

Youth lead and make decisions in 4-H clubs, groups, and experiences. That means that the most important piece of 4-H is YOU. As a 4-H member, you help to make decisions and can make your voice heard.

You can help to lead and make decisions in 4-H. Each statement is a way that you can get involved. Decide if you think the statement shows how you can be involved in 4-H at the club, county, state, or national level. Circle where this might apply. Some statements might apply to more than one level of 4-H.

**EXAMPLE** Sign up for a committee to help run a local 4-H event.

Club County State National

Vote on topics at meetings.

Club County State National

Represent my region on the Wisconsin Leadership Council.

Club County State National

Lead other young people and be a mentor as a camp counselor.

Club County State National

Attend Leaders Organization meetings and share my opinions.

Club County State National

Apply to be a delegate for National 4-H Conference.

Club County State National

Run for an officer position.

Club County State National

Be on the 4-H Communications Team.

Club County State National

Apply for the 4-H Drama Company.

Club County State National

Be a counselor for Space Camp.

Club County State National

Teach other members something I know.

Club County State National

Be on the 4-H Arts Team.

Club County State National



Credit: Heidi Vanderloop Benson



4-H Drama Company performing at 4-H & Youth Conference

Credit: Wisconsin State 4-H Communications Team

Don't know what one of these statements is talking about? Ask your club leader, county-based 4-H staff, or do an online search with your parent/caregiver!

**Which of these leadership opportunities sounded the most interesting?**  
**Why is it interesting to you?**

*Exploring 4-H for New Families is developed by Heidi Vanderloop Benson, Chippewa County 4-H Program Educator and Ben Hoppe, Brown County 4-H Program Educator, UW-Madison Division of Extension.*

*An EEO/AA employer, University of Wisconsin-Madison Division of Extension provides equal opportunities in employment and programming, including Title VI, Title IX, the Americans with Disabilities Act (ADA) and Section 504 of the Rehabilitation Act requirements.*



## 2021 Foods Revue Registration Form

*The Foods Revue will be held on Sunday, May 16, 2021. **Location/Details to be determined.** Registration will be at 1:30 p.m. with the judging starting at 2:00 p.m.*

This form must be postmarked or dropped off at the Extension Office on or before May 10, 2021.

Your entry **MUST** include your recipe and your menu (if required for your entry).

**LATE OR INCOMPLETE ENTRIES WILL NOT RECEIVE FAIR PREMIUMS.**

NAME \_\_\_\_\_ AGE \_\_\_\_\_ GRADE \_\_\_\_\_

ADDRESS \_\_\_\_\_

CITY \_\_\_\_\_ ZIP \_\_\_\_\_ CLUB \_\_\_\_\_

DEPT \_\_\_\_\_ CLASS \_\_\_\_\_ LOT # & DESCRIPTION \_\_\_\_\_

\_\_\_\_\_ THE RECIPE WHICH I WILL PREPARE ON MAY 16 IS ATTACHED, AND I HAVE DOUBLE-CHECKED IT FOR ACCURACY

\_\_\_\_\_ Except if I am a Cloverbud or Explorer. I have included my menu for meal or full day as required with this entry.

*This is a fair entry. You **MUST** enter Foods Revue again when you enter projects for the fair to get premium!*

---

The following adult or youth leader would like to help at Foods Revue:

Name \_\_\_\_\_ Phone \_\_\_\_\_

E-mail address \_\_\_\_\_

---

***Return to: Eau Claire County Extension Office, 227 1<sup>st</sup> Street W, Altoona, WI 54720  
by May 10***



4-H VIRTUAL LEARNING COMMUNITY

# VIRTUAL FITNESS CLUB



**HAVE FUN LEARNING ABOUT  
ENDURANCE, MUSCLE  
STRENGTH, FLEXIBILITY, AND  
MINDFULNESS IN OUR  
BEGINNER-LEVEL FITNESS  
PROGRAM**

FREE Program Series!  
Open to 3rd-6th Graders  
Tuesdays at 6:30-7:30 pm  
April 6, April 20, May 4, May 18  
Register at:

<https://v2.4honline.com/#/user/sign-in>

An EEO/AA employer, University of Wisconsin-Madison Division of Extension provides equal opportunities in employment and programming, including Title VI, Title IX, the Americans with Disabilities Act (ADA) and Section 504 of the Rehabilitation Act requirements



UW-MADISON EXTENSION

# Virtual Learning Community Opportunities to Teach & Lead

## \*Virtual Learning Community – Opportunity to Teach and Lead in 2021

Across the Division of Extension we have been learning and improving our transition to virtual spaces. You haven't heard from the Virtual Learning Community since our Summer Virtual Learning Community, but Positive Youth Development in virtual spaces has continued to grow and develop. Since summer we've been building out virtual opportunities and had over 500 people registered for our first ever Virtual Fall Forum AND hundreds of volunteers registered and participated in our Virtual Annual Leader Trainings. In order to continue building out a community of learning around the state, **we need Youth Leaders and Adult Volunteers!**

Below are some commonly asked questions:

### **Why are we inviting YOU?**

We have BIG DREAMS:

- provide high, quality virtual opportunities for youth and families across the state, **Kindergarten-13<sup>th</sup> Grades and Adults**
  - involve **YOUTH and adult leaders, staff and community partners** in facilitating planned activities
- provide **additional promotion** for programs that are being offered across the state

### **What type of content are you looking for?**

We are looking for project area content, leadership trainings and open spaces for youth to engage and connect around other topics/areas of interest. If you have an interest or passion and are willing to share it with others, we'll help make it work in a virtual space.

### **Does the session need to be new?**

Nope. We know that many participants were just getting to know the calendar and as they did never attended all the sessions that might have interested them. Also, if you're like us, you've been learning and tweaking. If you have a program that you have already offered and are willing to offer it again, please do!

### **Can I submit more than one session?**

Absolutely! We all know that virtual programs are most effective in 40 minutes, so if you have too much content for one session, a series is great. We've also learned from our evaluation that participants enjoy seeing each other more than once and recognizing faces and names.

### **Is there a deadline to submit?**

Nope. Programs are needed ongoing! Submission dates are weekly. After you submit, sessions will be reviewed by a committee of youth leaders, volunteers and staff using our Positive Youth Development learning review process adapted for virtual learning.

### **I would like a little more information about Virtual Learning Community before I submit. Where can I go?**

Fair enough. With the lessons learned, we have a new submission process, facilitator support resources, a uniform registration process, evaluation process and a plan for promotion and marketing. Our website can be found at <https://4h.extension.wisc.edu/virtual-learning-community/>.

— Continued on next page

## Virtual Learning—Continued from pervious page

### Okay! I'm convinced. Where do I submit?

Submissions can be made at: [https://uwmadison.co1.qualtrics.com/jfe/form/SV\\_2idXsm8tPCVGILz](https://uwmadison.co1.qualtrics.com/jfe/form/SV_2idXsm8tPCVGILz).

With the easy to use back button, you can explore the submission form to learn a little more about the types of sessions and content.

### What happens after I submit?

Our committee will respond to submissions with a follow up e-mail or call to the primary contact within a week.

The Virtual Learning Community knows how important supportive relationships within youth development spaces are to creating community, valuing youth voice and empowering action in our communities. We are committed to ensuring that anyone who wants to find an engaging, educational, and FUN online connection will be able to do so easily. We hope you will help us make it happen.

*In closing, as we wrap up 2020, we want to celebrate so many of you for being a part of our programming. It has not been an easy year, but we appreciate all of you continuing to engage and “learn by doing.”*

*Looking forward to connecting with even more of you in 2021!!*





## **The Blue Ribbon Sale of Champions Foundation is awarding \$30,500 in 2021 Scholarships.**

While we are all pleased to say goodbye to 2020, we are incredibly pleased that we will, once again, be awarding the Blue Ribbon Sale of Champion Scholarships at the 2021 Governor's Blue Ribbon Livestock Auction on Wednesday, August 11, 2021.

The Blue Ribbon Sale of Champions Foundation is awarding \$30,500 in 2021. We will award five \$2000 scholarships, six \$1,500 scholarships, seven \$1000 scholarships, eight \$500 scholarships, and a one-time \$500 Marv Espenschied Memorial Scholarship.

Marv Espenschied who passed away on December 7, 2020, was a Wisconsin State Fair superintendent and long-time supporter of the junior beef show at the Wisconsin State Fair. In memory of Marv, we are offering a special, one-time \$500 scholarship to a 2021 applicant who has participated in showing beef at the Wisconsin State Fair.

You will find the 2021 Blue Ribbon Livestock Auction Scholarship Information and Application at [Scholarship | News \(gbirla.com\)](https://www.gbirla.com/Scholarship-News)

We look forward to seeing you at the 2021 Wisconsin State Fair, August 5 - 15.



Many thanks to the 2020 Scholarship Recipients and their families who joined us at our, quite different, 2020 Scholarship Awards at Western Lakes Golf Club.

# Competitive Edge Scholarship Application

The Competitive Edge Scholarship Program offers 2-\$1,000 and 2-\$500 scholarships to incoming students at the University of Wisconsin-Madison.

Finalists for the scholarships can interview virtually on Saturday, April 17, 2021. The Competitive Edge Scholarship Program offers a one-day program that gathers resources from across campus by current students specifically for incoming students.

Name: \_\_\_\_\_

Gender: \_\_\_\_\_ Male \_\_\_\_\_ Female \_\_\_\_\_ Prefer Not To Identify

Address: \_\_\_\_\_

City: \_\_\_\_\_ State: \_\_\_\_\_ ZIP Code: \_\_\_\_\_

Email Address: \_\_\_\_\_

Phone Number: (       ) \_\_\_\_\_

Current Student Status:

\_\_\_\_\_ High School Senior/Incoming Freshman \_\_\_\_\_ Transfer Student

High School: \_\_\_\_\_ Class Rank: \_\_\_\_\_ Class Size: \_\_\_\_\_

ACT/SAT Score: \_\_\_\_\_ High School or College GPA: \_\_\_\_\_

Anticipated Major: \_\_\_\_\_

Leadership, Involvement and Participation (Top 5):

1. \_\_\_\_\_
2. \_\_\_\_\_
3. \_\_\_\_\_
4. \_\_\_\_\_
5. \_\_\_\_\_

Can you interview on April 17, 2021? \_\_\_\_ Yes \_\_\_\_ No

Comments or questions? \_\_\_\_\_

If you have any questions, please contact the Competitive Edge Scholarship Program Coordinator, Nate Daniels at npdaniels2@wisc.edu or (608) 393-7677.



ALPHA  
GAMMA  
RHO





## Youth sought to showcase their 'Livestock Lessons'

(Madison)

Livestock Lessons is a new animal science experience for Wisconsin youth. Giving a Livestock Lesson is an opportunity for youth to share their learning with others and to teach others about animal sciences.

Great news! The next round of entries in the Livestock Lessons program are due on March 19, 2021. The potential topics for your lessons are endless! We would love for you to submit your 4-H demonstrations, FFA public speaking entries, any videos and written work that aligns with work you are already doing. This time period will allow us to see you talk about acquiring your animal project or caring for newborn animals. No matter what topic you choose, remember that the most impactful presentations are both accurate and engaging. Be creative, be funny, be serious, just be you! Think about something you have learned in your animal science project or something that you enjoy doing and prepare to share it.

Round 2 of the Wisconsin Livestock Lessons will include many ways for youth to show their work and interests.

### **For grades 3-8: (only one submission per category)**

1. An oral video presentation.
2. Written Public Service Announcement (PSA).

### **For grades 9-13th: (only one submission per category)**

1. An oral video presentation.
2. Written Public Service Announcement (PSA).
3. SAE Project Slides.

Livestock Lessons are open to all youth who are interested in the animal projects. Each youth can enter one submission in both oral presentation and written public service announcements. Entries will be divided into the following grade judging categories from the 2020-2021 school year: Junior (Grades 3-5); Intermediate (Grades 6-8); and Senior (Grades 9-13).

For older youth grades, 9-13, there is a new entry category: SAE Project Slides. The SAE Project Slides are to assist older youth in framing out topics of interest and exploring careers, which can assist them in completing their SAE application.

Each FFA Chapter that submits three or more SAE Project Entries will qualify for special recognition at the 2021 WAAE Professional Development Conference. The Wisconsin



**ANIMAL &  
DAIRY SCIENCES**  
University of Wisconsin-Madison



**Extension**  
UNIVERSITY OF WISCONSIN-MADISON

286 Animal Sciences  
1675 Observatory Drive, Madison, WI 53706  
608-263-4304  
borourke2@wisc.edu

FFA Foundation will be supporting this new competition, with funds for qualifying chapters!

Submissions are due March 19. The top entries in each division will receive monetary awards and may be featured on Wisconsin Youth Livestock Program social media, YouTube channels and other media outlets.

**Oral Video Presentations, Public Service Announcements (PSA), and SAE Google Slides must be submitted by March 19.**

Thank you to our sponsors, Wisconsin Farm Bureau Federation, Wisconsin Pork Association, Wisconsin Beef Council, Wisconsin FFA Foundation and Wisconsin 4-H Foundation, who provided our winners with gift certificates to their favorite show supply store or Culver's.

Additional program information and instructions on how to submit your Livestock Lessons can be found by going to the Wisconsin Youth Livestock Program site at <https://bit.ly/LivestockLessons>.

For more information or to view the winning videos and PSAs from the previous contest, check out the Wisconsin Youth Livestock Program Facebook page <https://www.facebook.com/wisconsinyouthlivestock> or Instagram page <https://www.instagram.com/wiyouthlvstk/>. There is a [YouTube playlist](#) of all the videos that can be reviewed.

If you have questions, contact Bernie O'Rourke, UW-Madison Animal & Dairy Sciences Extension Youth Livestock Specialist, at [borourke2@wisc.edu](mailto:borourke2@wisc.edu).



Reminder:

YQCA



# Requirements

Youth for the quality care of animals, YQCA is a mandatory requirement for all exhibitors showing any Beef, Dairy, Goat, Rabbit, Poultry, Sheep & Swine at the Eau Claire County Fair 2021.

***The cost is \$12.00.***

***All species certificates need to be  
email to: Tammy Schlewitz***

***BY JULY 1st.***

***[eccountylivestockproject@gmail.com](mailto:eccountylivestockproject@gmail.com)***

**WEBSITE: [YQCA.LEARNGROW.IO](http://YQCA.LEARNGROW.IO)**

Made with PosterMyWall.com

## Youth for the Quality Care of Animals (YQCA) Fact Sheet

In the fall of 2017, Wisconsin replaced the MAQA (Meat Animal Quality Assurance) state program with the Youth for the Quality Care of Animals (YQCA) national program. This new and interactive program provides youth a number of options for an annual quality assurance youth certification. YQCA was created for youth in the Beef, Dairy, Goat, Poultry, Rabbit, Sheep, and Swine projects.

YQCA provides a common framework for food animal quality assurance programs which:

- ☐ **Strengthen the youth educational experience,**
- ☐ **Improve the care of food animals, and**
- ☐ **Promote a higher level of consumer food safety.**

This program allows youth to learn about other species of animals; not just the species they show. This program allows for the consistency of information being taught to youth in all states and in all species of animals.

YQCA content and modules demonstrate a progression of topic knowledge in designated age categories (Age as of January 1):

- ☐ **Junior (8-11)**
- ☐ **Intermediate (12-14)**
- ☐ **Senior (15-18)**
- ☐ **Young Adult (19-21)**

Each year, youth complete one new module in each the following categories:

- ☐ **Animal Welfare** (basic needs, proper animal handling, biosecurity, etc.),
- ☐ **Food Safety** (medications, medicated feeds, withdrawal times, avoiding residue, etc.)
- ☐ **Character Education** (ethics, goal setting, career exploration, etc.)

YQCA gives families more flexibility in gaining this required certification, which is more convenient to accommodate busy seasonal schedules. It's estimated that youth will spend roughly 60 minutes completing modules each year. Participating in the online program also saves money on fuel and food costs that can come with attending trainings.

YQCA illustrates the next generation of learning and can be offered to youth in a couple of ways:

1. **Online curriculum** - a youth exhibitor annually will complete three interactive online modules and corresponding quizzes. This is available 24/7 which allows exhibitors flexibility to take the course at their convenience.
2. **Face to face** - Trainer led program by either Extension personnel, Agri-Science teachers or veterinarians that have gone through a certification training.
3. **Online Exam** – upon passing an online youth member can achieve more than 1 year of certification.

YQCA replaced Wisconsin's MAQA program and the National Pork Board Youth PQA program, both of which are no longer in existence. Wisconsin 4-H and FFA leaders are pleased to share their joint support of this program which was implemented in Wisconsin starting in the fall of 2017. In addition, Wisconsin State Fair and other national exhibitions required certification in YQCA for participation in 2018.

### Why quality assurance education?

- ☐ The livestock industry and business are constantly striving for high quality, wholesome products.
- ☐ All species organizations have quality assurance programs. BQA, FARM (Dairy), PQA, etc.
- ☐ Consumers are more interested in how and where their food is produced.
- ☐ United States exports a lot of pork and beef. If there is a poor experience, that market is lost and it impacts the whole industry.





### Value of Quality Assurance Education?

- ☐ Most county programs provide education around grooming, showing and feeding. Very few offer specific information on the day to day management of animals, their facilities and their needs.
- ☐ This program also shares information related to sportsmanship, telling your story and young adult topics such as, stewardship, careers and hot topics in agriculture.
- ☐ Exhibitions and their partners value this education to minimize the incidence of unethical practices.
- ☐ Youth and parents are further removed from agriculture and how animals are raised and cared for.
- ☐ Need for consistent information from state to state.
- ☐ Wisconsin and Nebraska research indicates youth learn and put into practice what they gather from quality assurance education.

### What is the cost?

- ☐ \$12/person/year for the online modules that are different each year.
- ☐ \$3/person/year for the face to face trainings.

### Why the Cost?

- ☐ Online education increases cost due to managing the learning platform, however it increases the fun for the user and learning outcomes are greater.
- ☐ Development of creative modules where the information stays current.

### Is YQCA required?

- ☐ Wisconsin State fair requires YQCA for Junior exhibitors for Beef, Sheep, Swine, Goats, Dairy, Poultry and Rabbits.
- ☐ This certification is highly encouraged for all youth in the aforementioned animal projects in Wisconsin.
- ☐ Counties should require YQCA!
- ☐ Processing plants & marketing channels require it.
- ☐ State fair, national junior swine association shows and other national shows require it.
- ☐ Conversations occur on further requirements.
- ☐ This is an annual certification.

### Special features:

- ☐ The program was heavily peer reviewed and reviewed for youth age appropriateness.
- ☐ The online system gives youth options to receive the material. The system will read the material to youth so they can hear it.
- ☐ Coupons can be purchased to minimize the cost. Examples are: Producer groups, leader's councils, FFA alumni programs, etc.

### Access to the program both online and face to face:

- ☐ Log into <http://yqca.org>
- ☐ Follow the step by step instructions.

You can keep up with Wisconsin YQCA by going to <http://fvi.uwex.edu/youthlivestock/yqca> or by following the Wisconsin Youth Livestock Program Facebook page.

Bernie O'Rourke can be contacted by email at [borourke2@ansci.wisc.edu](mailto:borourke2@ansci.wisc.edu).

**Updated: 11/7/2019**

# All About Poultry!

Join us for statewide Poultry Meetings via Zoom.  
Each of the 3 meetings will have a different topic about poultry.  
You may attend 1, 2 or all of them.  
*Register through 4-H Online and there is no cost.*

**Monday, March 15th - 6:30 pm** (*Register by March 8*)

## **BASICS OF HATCHING CHICKEN EGGS**

Join us as we discuss the process of hatching chicken eggs!! Learn the basics of incubating chicken eggs from start to finish.



**Wednesday, March 31st - 6:30 pm** (*Register by March 24*)



## **BASICS OF RAISING MEAT CHICKENS**

Raising meat chickens can be a rewarding experience and we will show you how to get you started.

**Saturday, April 17th - 6:30 pm** (*Register by April 10*)

## **POULTRY TRIVIA**

Test out your poultry knowledge. We will be playing a trivia game with all types of facts about poultry!!







# Managerial Papers

**DUE  
May 1**

**This includes exhibitors  
showing breeding  
animals in the Beef, Dairy,  
Goat & Sheep  
Departments.**

**Any project animal not owned by the exhibitor,  
must complete managerial papers.  
This includes auction & breeding animal exhibits.**

Please email these to: [eauclairefair@gmail.com](mailto:eauclairefair@gmail.com)  
or mail to: Eau Claire Fair PO Box 434 Augusta, WI 54722

## Eau Claire County Animal Project Managerial Form

### OBJECTIVES

1. To develop character, knowledge and a sense of responsibility in animal projects.
2. To maintain or increase the number of youth carrying an animal project.
3. To maintain or increase the number of animals exhibited at Eau Claire County Fair.
4. To provide the opportunity to work with animals for non-farm youth and farm youth.
5. To increase the credibility of Eau Claire County Fair Managerial projects.

### RULES

1. The managerial project pertains to the following junior livestock show departments: dairy, goat, beef, swine and sheep.
2. The program is available to any member, hereafter referred to as the Lessee, and in good standing in an Eau Claire County Fair approved youth organization or Breed Association.
3. The owner will jointly determine with the Lessee specific responsibilities to be carried out by the Lessee. The responsibilities and agreement will include items such as:
  - a. When the animal stays on the owner's premises, that Lessee shall enter into an Agreement with the owner regarding Lessee's responsibilities as to the care of the animal or the group of animals it is a part of.
  - b. When the Lessee has possession of the animal, they shall enter into an Agreement with the owner regarding the allocation of responsibilities for feed, veterinarian care, breeding and insurance.
4. *Managerial Form Required* if the exhibitor is showing an animal which is co-owned or owned by someone other than an immediate youth family member (sister, brother, step-sister or step-brother) or the parents, legal guardians or family Flock/Ranch/Farm.
5. All animals must be under the daily care and supervision of the exhibitor or owner from the time the agreement is owner or family farm, between the entry date and the Eau Claire County Fair.
6. The Eau Claire County Fair Animal Managerial Project Agreement must be signed and received in the Eau Claire County Extension Office on or before May 1 of the project year for eligibility.
7. The title of ownership as stated on the registration certificate of a registered managerial animal will remain in the possession of the owner.
8. The owner will make the animal available to the Lessee during the period of the Eau Claire County Fair Animal Managerial Project Agreement. The owner does retain the ability to exhibit the identified managerial project animal during the period of the agreement in open shows prior to and after the Eau Claire County Fair if it meets the guidelines of the said show(s). The managerial animal is not to be shown by another managerial exhibitor during the period of the managerial contract at any other County Junior Fair.
9. The owner of the managerial animal agrees not to hold the Lessee or Eau Claire County Fair liable for any financial loss from injury or death to the managerial animal.
10. The owner or Eau Claire County Fair is not responsible for injuries to the Lessee and participation in this project will require Lessee and Lessee's parent/guardian to hereby release from liability the owner and all other persons and entities involved with this project.
11. The Lessee is responsible for all expenses incurred in exhibiting the animal, such as veterinary, transportation, grooming, feed and other miscellaneous expenditures. The Lessee may keep any premiums or awards while exhibiting the animal during the duration of the contract.
12. The Eau Claire County Fair Animal Managerial Project Agreement will remain in force until the end of the project year or until terminated by either party. This Agreement may be terminated prior to the end of the project year for reasons such as:
  - a. Failure of Lessee to carry out responsibilities as outlined in this agreement
  - b. Changes in the farming operation of the owner
13. ☐ Check box and attach any additional documentation regarding your personal agreement, if any.

## Eau Claire County Animal Project Managerial Form

Project Year \_\_\_\_\_

This Managerial Project Agreement is entered into on (Date: \_\_\_\_\_mm/dd/yyyy) between

Owner: Name \_\_\_\_\_ Telephone \_\_\_\_\_

Address \_\_\_\_\_

And youth (project member): Name \_\_\_\_\_ Telephone \_\_\_\_\_

Address \_\_\_\_\_

The owner hereby agrees to lease to the youth listed above the following animal(s):

Name	Breed	Registration Number/Identification

The owner and the project member mutually agree upon the items state below:

In return for the privilege of working with the above referenced managerial animal, the project member agrees to:

1. Assume responsibility for care and management of the project animal.
2. Read and understand the rules and responsibilities of the lease and agree to abide by the stated requirements of the program.
3. Read and understand the release of liability and have signed the same. (if 18 or older sign both A&C)

A. Youth (Project Member) Signature \_\_\_\_\_

\_\_\_\_\_Date

I have read and understand the rules and responsibilities of the Eau Claire County Animal Project Agreement and agree to abide by the requirements of the program.

B. Owner Signature \_\_\_\_\_

\_\_\_\_\_Date

I have read and understand the contractual agreement entered into by the project member and owner and agree not to hold the owner liable for any injury or financial liability that the project member may incur during this contractual agreement. I will be responsible for any damages or loss because of the lack of care by the project member. (or exhibitor if over 18, sign both A & C)

C. Parent or Legal Guardian (or exhibitor if over 18) Signature \_\_\_\_\_

\_\_\_\_\_Date

D. 4-H County Extension Agent, Agriculture Education Instructor,  
Breed Association Advisor, or Other Approved Youth Group Leader Signature \_\_\_\_\_

\_\_\_\_\_Date

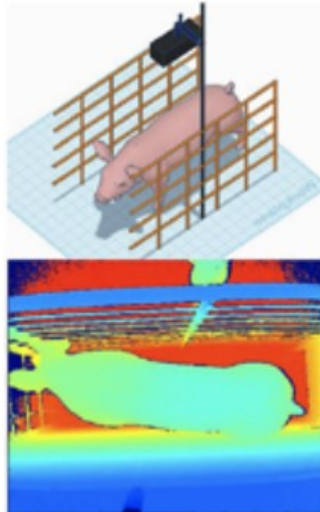
The project member is a member in good standing in our respective program and has a Managerial Project Agreement on file at the County Extension Office.



## WISCONSIN YOUTH LIVESTOCK PROGRAM (WYLP) PRESENTS



### EDUCATIONAL PROGRAMMING 2021



#### April 8 - Use of Technology in Animal & Dairy Sciences

All events are virtual and begin at 7 p.m.  
Can meet county educational requirements.

For more information & how to  
register:

<https://go.wisc.edu/r3x8lh>



#### FRIENDS OF THE FAIR RAFFLE (TO SUPPORT THE EAU CLAIRE COUNTY FAIR)

- FIRST PRIZE: TRAEGER PELLET GRILL & PELLETS (VALUE \$840.00)  
*donated by Lampert Lumber of Augusta & FOF*
- SECOND PRIZE: FIRE RING (VALUE \$300.00) *donated by Global Finishing Solutions*
- THIRD PRIZE: 1/2 HOG (VALUE \$250.00) *donated by Big Mike's Meats & Phillips Catering, LLC*
- FOURTH PRIZE: CAMPING THEMED BASKET (VALUE \$200.00) *donated by Augusta FFA*
- FIFTH PRIZE: RODAN & FIELDS ESSENTIAL BASKET (VALUE \$160.00)  
*donated by Christine Watlike*
- SIXTH PRIZE: HONEY BASKET (VALUE \$100.00) *donated by Logterman Honey, LLC*
- SEVENTH PRIZE: \$50.00 GIFT CERTIFICATE TO STOCKMAN'S FARM SUPPLY  
(VALUE \$50.00) *donated by Osseo Fairchild FFA*
- EIGHTH PRIZE: \$50.00 GIFT CERTIFICATE TO BIG MIKE'S MEATS (VALUE \$50.00)  
*donated by Big Mike's Meats & Phillips Catering, LLC*

**DRAWING AT EAU CLAIRE EXPO CENTER  
SUNDAY, AUGUST 1, 2021 AT 2:30 P.M.**

No 0001

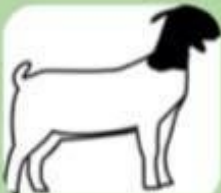
Tickets: \$5.00 each  
Need not be present to win  
License No. R0024505A-54316

To purchase raffle tickets please contact Jenny Zimmerman, raffle coordinator @ 715.586.0015





# NSC 2021 Livestock Shows



**Saturday,  
May 22nd, 2021**



## **Breeding Goat Show**

(Meat, Dairy/Meat Cross & Dairy Breeds)

- ~ Does (Kids to Mature)
- ~ Bucks (After January 1)
- ~ Market Goats (By Weight)

## **Breeding Sheep Show**

(Registered & Wether Type)

- ~ Ewes (Lamb to Mature)
- ~ Rams (Lamb to Yearling)
- ~ Market Lambs (By Weight)

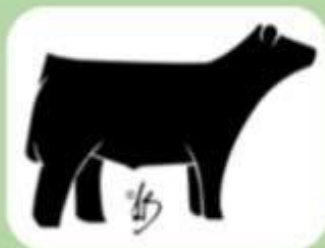
### **Pierce County Fairgrounds**

364 N. Maple Street  
Ellsworth, WI 54011

Due to COVID-19 there is a limit to the number of people on the fairgrounds. All exhibitors will need to be pre-entered with the information on the Northern Show Circuit Facebook page. Day of Show entries MAY NOT be accepted.

If you have any questions visit our Facebook Page or call John at 715-684-9529

**Sunday,  
May 23rd, 2021**



## **Beef Show**

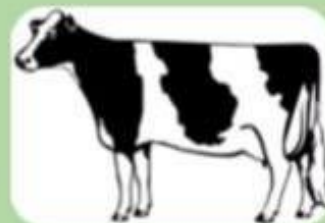
(Open to All Breeds)

- ~ Heifers (Calf to Yearling)
- ~ Cow/Calf Pairs
- ~ Bulls (After January 1, 2020)
- ~ Market Steers & Heifers (By Weight - Beef, Dairy, Beef/Dairy)
- ~ Prospect Steers/Bulls (After January 1, 2021)

## **Dairy Show**

More info to come

Watch Our Facebook Page  
for the full class list



# New!

# Looking for a Superintendent for Plant & Soil Science, Crops, and Garden Display



If you are interested please email:  
[eauclairefair@gmail.com](mailto:eauclairefair@gmail.com)

## WISCONSIN YOUTH LIVESTOCK PROGRAM (WYLP) PRESENTS

.....

### EDUCATIONAL PROGRAMMING 2021

**January 14** - Roaming the Rumen

**February 11** - Feeding & Caring for Swine without  
Ractopamine

**March 11** - Lamb Live & Carcass Evaluation; Lamb  
Culinary products

**April 8** - Artificial Intelligence in Animal Sciences

**May 13** - Meat Science Cookery - making and cooking of  
meat products

**All events are virtual and begin at 7 p.m.**  
**Can meet county educational requirements.**



For more information & how to  
register: <https://go.wisc.edu/r3x8lh>





# Eau Claire County Friends of the Fair

---

**Our Mission:** To secure the resources needed to provide the financial stability that will assure the future of the Eau Claire County Fair as a family and youth focused community event.

---

A message from the Eau Claire County Friends of the Fair,

The Friends of the Fair (FOF) has worked tirelessly to ensure that the youth of Eau Claire County are able to participate and exhibit projects to show what they have accomplished over the past year. In order to achieve this goal and meet our mission, FOF annually strives to secure the financial support necessary to successfully host a fair. This couldn't be done without support, in-kind donations, sponsorships from businesses, community members, non-profit organizations, area grants, and by individuals and families who believe in supporting the youth.

In the past, FOF held a golf outing and dinner to help off-set the cost of the fairgrounds and raise funds for all expenses. More recently, a silent auction and raffle have been the main fundraising events and have been a huge success for FOF and the fair by covering the annual expense of the fairgrounds (typically \$5,200 per year). With changes taking place with the County and Extension relationships, as well as the Covid-19 mandates that are in place, financial support for the fair this year will need to look a little different. This year, to put on the fair, FOF is asking each exhibiting fair family for support.

**Each family will be asked to do ONE of the following:**

1. Sell/buy 5 raffle tickets (5 tickets at \$5 each = \$25)
2. Give a monetary donation of \$25
3. Provide a donation item for the silent auction, valued at \$25 or more

**\*\* See enclosed slip for instructions\*\***

Friends of the Fair understands these are difficult times for everyone. They, along with the Fair Committee, continue to look for cost saving measures through all aspects of the fair and follow up on any possible leads for donations and support, while continuing to host a high quality, youth and family focused event.

The FOF and the Fair Committee would also ask for families to volunteer at the fair. Volunteering helps reduce costs and is a great way to support the fair.

For our youth, the county fair fosters life skills, leadership, emotional and social development, and strength in family, amongst other important aspects. These benefits and elements, both direct and indirect, have been a tradition at our fair and are the reasons we are working tirelessly to continue to offer this experience to our youth.

Get involved and support the fair, while supporting our youth!

Thank you,

Eau Claire County Friends of the Fair Board & Committee





# Eau Claire County Friends of the Fair

**Our Mission:** To secure the resources needed to provide the financial stability that will assure the future of the Eau Claire County Fair as a family and youth focused community event.

Family Last Name: \_\_\_\_\_

Name(s) of Youth Exhibiting in Family: \_\_\_\_\_

Address: \_\_\_\_\_

Please indicate which option your family will participate in. Select ONE:

- ☐ Buy/Sell \$25 worth of raffle tickets (5 tickets total at \$5 each)  
5 tickets are enclosed  
Fill out raffle tickets, write check payable to: Friends of the Fair  
Send to or drop off with Jenny Zimmerman at address below
- ☐ Donate \$25 to Friends of the Fair to cover 2021 Fair Expenses  
Return the unsold raffle tickets  
Write check payable to: Friends of the Fair  
Send to or drop off with Jenny Zimmerman at address below
- ☐ Provide an item for the Silent Auction, valued at \$25 or more  
To be dropped off at the Eau Claire Co Expo building on Wednesday, July 28, 2021  
List what you intend to donate: \_\_\_\_\_
- ☐ Check here if you wish to sell/buy additional raffle tickets.  
Please indicate how many you would like \_\_\_\_\_

**Mail this completed slip, raffle tickets (sold & unsold) & payment to:**

Jenny Zimmerman (FOF Raffle Coordinator & Secretary)

S15405 County Road R

Osseo WI 54758

715-586-0015

[Jenzimmerman3@gmail.com](mailto:Jenzimmerman3@gmail.com)



Greetings:

The Eau Claire County Fair Committee is excited to share our decision to move forward with the expectation of holding as much of the 2021 Eau Claire County Fair as possible. Regardless of what portion of the Fair may be held, we plan to provide a 2021 Fair experience for our exhibiting youth. We will be taking all required precautions to make the Fair safe for our exhibitors, volunteers, and judges as we move forward with preparations. We look forward to seeing our exhibitors and their projects at the 2021 Eau Claire County Fair!

Exhibitors that the 2020 Showcase would have been their last year showing will be allowed to exhibit one additional year at the 2021 Fair.

Updated Fair Books will be available March 15, 2021.

Fair Entry will be available May 1 – June 4, 2021 on Fair Entry.

Watch for updates: the Eau Claire County Fair Facebook page,  
in the 4-H Cloverleaves, and the Friends of the Fair website  
<http://eauclairecountyfair.com>

If you have any questions, please contact [eauclairefair@gmail.com](mailto:eauclairefair@gmail.com)

## **Fair Sponsorship**

If you would like to be a sponsor of the Eau Claire County Fair, please see the last three pages of the *Clover Leaves* for the information and forms! Thank you for your support of the Eau Claire County Fair!

# Club Minutes



## Maple Drive Boosters

We started our meeting at 6:30. We first asked every member where their favorite place to travel was. Lucia then shared last month's secretary's report. Anna recognized Lucia for trying out for tennis, Lisa recognized Howie for joining our club, and Avery recognized everyone for joining our meeting. In old business we went over 4H on the air and Katy expressed her interest in participating in that. In new business we went over raffle ticket sales and our budget for fair trophies. Lisa then shared the general leaders' notes. She went over new protocol for meeting in person and members shared existing COVID concerns. We then were informed that all members will receive 40 dollars from the club for participating in new 4H opportunities. We then gave a big welcome to our new member Howie. We discussed when we would be picking up cans next and bringing them to Spicklers. We ended our meeting with a game of zoom bingo and had many winners. We ended our meeting around 7:30.

## Pleasant Valley Clovers March Meeting Minutes

Before the meeting June led an activity on how to make a balancing bird using cardboard, pennies, and toothpicks.

The meeting was called to order by Allison and pledges were said. Roll call was taken by saying your favorite spring thing. We did a birthday clap for Cierra and Seeley. A motion was made by Beckett and seconded by Emma W to accept the secretary's report. The treasurer's report was also read.

For old business we were reminded to get your demonstration recorded and on flipgrid. A link was sent where you can watch animals live from the San Diego Zoo. There was no other old business.

For new business we will send out a survey to see who wants to meet in person. We also discussed upcoming April activities. One of them being balloon animals and a motion was made by Ada and seconded by Connor to have the club buy supplies for families. Thompson's will do the hand washing activity next year. For upcoming May activities, Thompson's will create a 4-H in a box activity. Dorn's will look into finding activities at Beaver Creek. Kortbein's will get supplies for Kindness Rock painting. Updates were given on Friends of the Fair Raffle. There was no other new business.

For the youth leaders report Allison said they discussed donations and got to see the Schlewitz farm. For the adult leaders report they talked about new state guidelines, Plat Book photo contest, possibly raise dues in the future, Farm Tech Days Food Stand, and Welcoming Environment Training. Check the Clover Leaves for more information on upcoming events.

The motion to adjourn the meeting for the scavenger hunt was made by Beckett and seconded by Connor.

Submitted by Lindsay Duerkop



# Club Minutes

## Country Cousins

The March Country Cousins 4-H Meeting was held on March 15, 2021 through ZOOM, called to order at 7:02 pm (attendance taken by Kassie Andreas). We went through the secretary's report of last month, as well as our treasurer's report.

As we decided last month, we will keep meeting on every third Monday of the month. We are hoping to be in person next month, following all state guidelines, of course.

For old business, there was a reminder for enrollment and membership dues to get into as soon as possible. We decided on \$10 per child or as much as manageable for each family.

This month, as our activity, we had thought of having a sledding party at the Accola home on the 24th, but because there really isn't any snow left, we will just be having a day of hanging out at the same location. Demonstrations are also a possibility of doing, so let myself or Jenni know if you are planning on doing so sometime before then.

For new business, we discussed coming up with a theme for the overall fair. There is a contest going on for this, which ends March 22, so let someone know if you have a last minute idea. There is a cash prize of \$20 for the winning theme. Since there won't really be themes for each club at the fair, we will still be coming up with our t-shirt designs, so be thinking on that for the future. However, we will be waiting to address that until the county fair committee comes up with the overall fair theme.

As our April activity, members are encouraged to record any April fools prank they did and it will be shown at our next meeting (BE CREATIVE!!).

The meeting was adjourned at 7:37 pm by Eric Steinke and seconded by Kassie Andreas. Next meeting will be April 18 at 7 pm (hopefully in person).



# Club Minutes

## Pleasant Valley Secretary Report March, 2021

Pleasant Valley 4-H Club held its monthly meeting on Thursday, the 18th of March via zoom. The meeting was called to order by President Rachel Anderson at 6:34 P.M. The pledges were led by Brooke Berg. For roll call everyone shared what they were wearing that was green. There were no March birthdays. The Treasurer's report was sent out in an email. Izzy made a motion to approve the treasurer's report and it was seconded by Sydney. Motion passed. The Secretary's report was sent out in an email and approved by the club. Teegan made a motion to approve the secretary's report and it was seconded by Lindsay. Scott Schultz from the heartbeat center led the part 2 of the guided writing with the members. Many members shared their stories, he challenged us to pay attention and to write about what you hear and see.

We then recapped old business. Alex and Paige went to the virtual tri-county speaking and demonstration contest Paige shared her crazy flu story and her fun experience and Alex shared his snakes at school story. Heather explained doors to the past. For doors to the past you will write a story or a poem on a door if you are interested you can still do it please reach out to Heather. Our sledding at Pinehurst activity was canceled due to the lack of snow. Old business was passed by Ava and seconded by Lindsay.

We moved on to new business. Heather shared after April 1st in person meetings are allowed. Heather also shared that you only need to sell friends of the fair raffle tickets if you are going to be exhibiting at the fair. We discussed our fair sponsorship for 2021. A motion was made to donate \$550 as a fair sponsorships for 2021 by Sydney and seconded by Anna. The fair theme contest is due March 22nd look on facebook for more information and email your entry to [eaucloairefair@gmail.com](mailto:eaucloairefair@gmail.com). New business was passed by Melodie and seconded by Alana.

The meeting was adjourned at 7:22 P.M. by Alana and seconded by Jude. The ending activity was a green themed scavenger hunt. Our next club meeting is Thursday, April 15th at 6:30 P.M. at Cleghorn Community Center or via zoom.

Respectfully Submitted,  
Brooke Berg

# Club Minutes

## Eau Claire Clovers

The Eau Claire Clovers March Meeting was held on March 21 at 4pm via Zoom. Beth Berger called the meeting to order and led the pledges. Sam Gardow took attendance and the attendance question was what you're doing over spring break. There were no birthdays this month. The secretary's report was posted on Facebook and motioned to pass by Katelyn and seconded by Hannah. The treasurer's report was read by Patricia and motioned to pass by Piper and seconded by Hannah.

Beth Berger went over old business.

- Ag in the Classroom-Deadline April 1
- STEM Mini Camp-Started March 16
- Eau Claire County Photo Contest-Deadline March 1st- Francine Clark mentioned that one of our members Kendall Keith had submitted a photo and we will see what pictures will end up on the cover of the Platt book.

Doors to the Past Meeting- Patricia Clark talked a bit about how the meeting went.

The old business was then motioned to pass by Piper and seconded by Hannah. Piper Munion did an ice-breaker by doing a mad lib at this time.

Beth Berger proceeded to go over new business.

- Updated Fair Books Available March 15

Fundraising at Festival- Francine has signed our club up for June 5 and July 9. as possible Brat Barn fundraisers. We will have to see what the guidelines are regarding in person activities, in the summer.

Hannah motioned to pass new business and Maddie seconded it.

Francine Clark went over the leaders report.

- New guidelines for Covid are out - We are able to meet in person now, with a limit of 50 indoors and 150 outdoors. However, indoors, our numbers are limited to a capacity of 30% of the building that we're in. Francine suggested that perhaps we can start having more in person meetings (we do have to get approval first). April we are hoping to meet at the Paint Shack and May, June, July and August we can see if we can meet outdoors at a park.
- Online experiences - There are many online experiences that are being provided by 4-H. This is a great time to take advantage of them.
- Raffle tickets now don't have to be bought, but as an alternative you must either donate \$25 or a silent auction basket worth \$25 or more. Each family will receive information from Friends of the Fair.

Dee Helverson talked about the paint shack, must bring mask, and there will be staggered start time classes. More information to come.

The meeting was motioned to adjourn by Piper Munion and seconded by Katelyn. After the meeting Piper Munion led an activity in which we made washcloth bunnies.



# Club Minutes

## Pleasant Hill Go-Getters 3/8/21 Meeting Minutes

Before the meeting started, we shared our favorite animals as everyone was getting logged into the meeting. The meeting was called to order at 6:38pm on Monday night by Lily. Pledges were led by Mason and Grayson. The icebreaker was led by Mason and McCabe. We played 2 truths and a lie. It was very fun! Abby took roll call and read the secretary's report. 20 members were in attendance. The secretary's report was motioned by Nick and Jillian. Mason read the treasurer's report. We have \$1,391.13 in checking and \$246.97 in savings. The report was motioned by Abby and Nick.

Lily talked about the Clover Leaves report: 4H on air will be April and October for our club. Applications are due March 15 for camp counselor's 9th grade and up. There is an all about poultry class on March 15, 31 and April 17. A fitness club for 3rd-6th graders will be held April 6 and 20 and May 4 and 18. There is a goat and sheep webinar on March 10 starting at 1pm. YQCA. The EC fair theme contest (can email suggestions for fair theme to [eaucloairefair@gmail.com](mailto:eaucloairefair@gmail.com)). Each family is asked to sell 5 tickets for \$5 each for the Friends of the Fair raffle. There is a black and white photo contest and entries are due March 15th.

Grayson gave the OYC report. They attended the Schlewitz farm on Feb. 28 to see the animals and go through the barn.

For old business, Abby talked about the February social, where the 4H members watched each other's talents. Lily talked about the mask sewing project in January. 8 or 9 people attended and made a cool 4-H mask! The old business was motioned by Mason and Lorelei.

For new business we talked about the weekly activity or project slots on Facebook. You can post daily or weekly. We brainstormed ideas for our April and June meetings and Lily made a comment saying we can now have 50 people or 30% capacity. Most people wanted to have a paint shack meeting for April. Alicia will check on times. For May, we are going to make Cream Puffs! Heidi the coordinator for Chippewa county will teach the class.

We will go to the Schlewitz farm on March 21 to see the baby goats and calves. Wear your mud boots! We received a thank you note from the residents at the Good Shepherd apartments.

Alisha and Jillian motioned to adjourn the meeting, and the meeting was adjourned at 7:27 pm. Skylar led our project which was a cute rainbow kite with a face!

Respectfully submitted,  
Abby Hendrickson, secretary



January 1, 2020

Greetings!

Since its first year in 1924, the Eau Claire County Fair has been an educational experience for patrons of all ages. This free and family focused event is held the last week in July, and truly has something for everyone. Visitors can enjoy the Classic Car Show, Cowboy Mounted Shooting Sports, Livestock Auction, Animal Exhibits, STEAM Day, Kid's Day activities on Friday and Saturday (*featuring a petting zoo, emergency vehicles, and safety displays*). Visitors can experience these and many more activities at the fair.

In an effort to create a more efficient sponsorship process for the Eau Claire County Fair, a streamlined application is furnished for your convenience. Sponsorship requests have been categorized for ease. This is an opportunity for you to contribute your support to the Eau Claire County Fair, with multiple levels available, including options to have your logo or name on the exclusive fair t-shirt for the 2020 Eau Claire County Fair!

None of these wonderful community opportunities would be possible without support from generous donors like you! The following page includes a breakdown of ways in which you can become or continue to be a partner in the future of the Eau Claire County Fair.

Sincerely,

Eau Claire County Fair Sponsorship Committee

**Eau Claire County Fair Legacy Partner:** (\$1,500+) You will receive all benefits associated with the Diamond Donors. Also, your company logo will be included beside your name on the official fair t-shirt and you will receive 5 complementary t-shirts for your support.

**Diamond Donors:** (\$1,000-\$1,499.99) Your name and company logo will be in color on the widely distributed fair brochure, included on our website and displayed on banners and event brochures throughout the fairgrounds. Your company name will be included on the official fair t-shirt.

**Platinum Donors:** (\$500-\$999.99) Your name will be listed in color on the fair brochure and included on our website and displayed on banners and event brochures throughout the fairgrounds.

**Gold Donors:** (\$250-\$499.99) Your name will be listed in color on the brochure and included on our website and displayed on banners throughout the fairgrounds.

**Silver Donors:** (\$100-\$249.99) Your name will be printed on our brochure and included on a banner during the fair.

**Bronze Donors:** (\$25-99.99) Your name will be listed with other generous donors on a banner during the fair.

If you are donating at a level that includes the promotion of your logo, please email your logo to [lisa@johnsonlitho.com](mailto:lisa@johnsonlitho.com).

**Questions?** Please contact one of the following Sponsorship Committee Members with any questions you may have.

Debbie Kitchen [\(715\) 579-4703](tel:7155794703)  
Cindi Syverson [\(715\) 864-7307](tel:7158647307)  
Lisa Vetsch [\(715\) 271-5015](tel:7152715015)

**Yes, I want to help the youth of Eau Claire County and support the Fair!**

Please find enclosed my donation of \$\_\_\_\_\_. I would like my donation to go towards: (Please check all that apply). *Sponsorships are confirmed on a first come first serve basis.*

- ☐ Tent Sponsorships
- ☐ Special Fair Events (*Please indicate if you wish to support a specific event at the fair*)
- |   |   |                                    |
|---|---|------------------------------------|
| <input type="checkbox"/> Classic Car Show               | <input type="checkbox"/> Kid's Day Activities         | <input type="checkbox"/> 4-H Day   |
| <input type="checkbox"/> FFA Day                        | <input type="checkbox"/> Open Class Beer/Wine Judging | <input type="checkbox"/> STEAM Day |
| <input type="checkbox"/> Cowboy Mounted Shooting Sports |   |                                    |
- ☐ In-Kind Donation (*Please specify the items donated and their value on the lines below*)
- Item:* \_\_\_\_\_ *Value:* \_\_\_\_\_
- ☐ Trophies/Ribbons/Fair Awards *If you wish, you may specify a category for the award you would like to sponsor on the line. (Ex. Computers, Natural Science, etc.)*
- OPTION #1* \_\_\_\_\_ *OPTION #2* \_\_\_\_\_
- ☐ Animal Awards
- |  |                                |   |
|--|--------------------------------|---|
| <input type="checkbox"/> Livestock ( <i>Beef, Sheep, Goat, Swine</i> ) | <input type="checkbox"/> Dairy | <input type="checkbox"/> Poultry/Rabbit |
|--|--------------------------------|---|
- ☐ Unspecified Monetary Donation (*Your generous donation will be applied as needed*)

Name: \_\_\_\_\_

Company Name (*If Applicable*): \_\_\_\_\_

Street Address: \_\_\_\_\_

City: \_\_\_\_\_ State: \_\_\_\_\_ Zip Code: \_\_\_\_\_

Phone Number: \_\_\_\_\_

Email: \_\_\_\_\_

Signature: \_\_\_\_\_

Please indicate your level of sponsorship (*Refer to the letter for levels*): \_\_\_\_\_

If donating as an Eau Claire County Fair Legacy Partner, please indicate t-shirt sizes for all 5 shirts.

\_\_\_\_\_

**Checks can be made payable to: "Friends of the Fair" and sent to:**  
P.O. Box 434 Augusta, WI 54722

We are asking that your donations be submitted by **February 28, 2020**. Payment must be submitted before your name or company logo will be added to fair materials. All proceeds will help with the continuation of the Eau Claire County Fair. Your support is greatly appreciated!

---