

# Clover Leaves



**Extension**  
UNIVERSITY OF WISCONSIN-MADISON  
EAU CLAIRE COUNTY

## Eau Claire County's 4-H Newsletter



*4-H is a community of young people across America who are learning leadership, citizenship, and life skills.*

Hello 4-H Families,

I hope you are enjoying the beautiful weather. I know I am. I have my seedlings sitting outside, starting to harden off. I'm also enjoying the pear and apple blossoms starting to bloom and imagining the fruit I'll get come August. (Let's not get ahead of ourselves, though, right? Blossoms don't guarantee fruit...)

As we come into the home stretch of the school year before summer hits, there are LOTS of things that are happening for summer programming. We are planning on a series of day camps June 7-10 at Pleasant Valley Community Center. See page 6 for details. I hope your family will sign up. And, recruit your friends to join us, too!

We are also planning for the Eau Claire County Fair. Exhibiting at the fair is an important part of the 4-H year. It helps us complete the parts of the Learn by Doing model that includes "do," "reflect," and "apply." Thanks for being a great place for 4-Hers to exhibit, Eau Claire County Fair!

Things will not be "normal," but there will be a fair. Thank you to Lisa Vetsch, chairperson of the Fair Committee for the work she has put into her leadership role. Thank you to Debbie Kitchen in the role of Fair Coordinator. There are lots of details to manage, especially in making sure that we are following public health guidelines so that everyone on the fair grounds stays safe. Thanks also to the Friends of the Fair that works to help solicit the financial support to make the fair run. We love our fair and the fact that it is so youth-focused.

Please note that all Eau Claire County Fair documents and forms are found at their new website, [www.eauclairecountyfair.com](http://www.eauclairecountyfair.com). This makes sure that anyone who exhibits at the fair can find the correct forms. Please see the website for the judging schedule and the fair book. If you have questions regarding the schedule or Fair Book, please contact Debbie Kitchen at [eauclairefair@gmail.com](mailto:eauclairefair@gmail.com). If you have questions about Extension's role in the fair, please give me a call at my new work cell phone number, 608-572-3656.

Growing together,

## May 2021

### In this issue

Project Information Facebook	2
Calendar, Leaders Association News	3
4-H On the Air Schedule Broadband Test	4
Foods Revue Registration	5
Summer Day Camp Registration	6
Dairy, Livestock, & Meats Judging Teams	7
Tractor Safety Class	8
CVTC High School Transportation Camp	9
U of M Extension Photo Contest	10-11
Virtual Learning Community	12-13
Leaders Assoc. Food Stand at Farm Technology Days	13
Free Roosters	14
2021 Fair Book Correction	
Exploring 4-H for New Families	15-16
Invasives Monitoring Program	17
YQCA Information	18-20
NSC Livestock Shows	21
Friends of the Fair Raffle	22
Message from Friends of the Fair	23-24
EC County Fair Information	25
Club Minutes	26-28
EC County Fair Sponsorship	29-31

**Does your club or project group  
have a Facebook page?**

Let us know about it so Extension can be a fan. Be sure your club/project “likes” [EC County UWEX](#)—let us help each other get the word out!

**New to 4-H this year?**

Be sure to “like” [Eau Claire County UW-Extension](#), and the [Expo Center](#), on Facebook to stay current of 4-H and Fair info!

AND

Add “[Extension Rachel](#)” to your friends.



## Project Literature

### Need 4-H publication materials?

EC County 4-H’s Publication Library just grew! In addition to materials for the many projects we already had, we just received publications on the following project areas:

- |                    |                                    |             |
|--------------------|------------------------------------|-------------|
| + Adult Leadership | + Science: Wind Power and Robotics | + Health    |
| + Service Learning | + Celebrate Art                    | + Aerospace |
| + Scale Models     | + Photography                      | + Horses    |
| + Theatre Arts     | + Sewing                           | + Rabbits   |

See the full library list here: “[Project Literature Library](#)”. Come to the Extension Office to check-out materials for a month, free!

If you are a **club officer**: we have publications to help you better understand your duties! Contact the Extension Office to borrow them.

Looking for **Cloverbud** materials? Contact the Extension Office.

You can always purchase your own items at

[www.4hmall.org](http://www.4hmall.org)

**Eau Claire County Extension Office**  
227 1st Street West  
Altoona, WI 54720

Phone: (715) 839-4712

Fax: (715) 839-6277

Website: [eauclaire.extension.wisc.edu](http://eauclaire.extension.wisc.edu)

Facebook: [facebook.com/  
extensioneauclairecounty](https://facebook.com/extensioneauclairecounty)

Instagram: [eccounty4hambassadors](#)

Snapchat: [eccounty4hambassadors](#)

### CLUBS!

Submit the minutes from your last meeting for admission in the *Clover Leaves* so your members can see the highlights and other clubs can see your good example!

**Email to Andy by the 20th of each month.**

[Andy.Heren@co.eau-claire.wi.us](mailto:Andy.Heren@co.eau-claire.wi.us)

## Calendar

**May 16: Foods Revue, 1:00PM (Registration due May 10!)**

**May 17: Horticulture Mini Camp (session 1)**

**May 20: Choose Your Fabric/Choose your accessories workshop, 6:30PM**

**June 7-10: Summer Day Camp Series (Register through 4-H online. See Page 6 for details.)**

**June 24: Clothing Revue, 6:30PM**

*For more programming, please see the Virtual Learning Community Page: [Virtual Learning Community – Wisconsin 4-H](#) or check out “Events” in 4Honline*



## News for Leaders

The safety guidelines for meeting in person April 1-June 1 are the following:

- no more than 30% capacity in an indoor space & up to 50 people at one time indoors
- pods (groups) of 20 can move through activities together (some exceptions apply to needing groups. Talk to Rachel to plan your meetings if you want in person options.)
- No eating indoors
- Groups separated into groups of 20 and up to 150 people can meet outside

See [4-H FAQs Related to COVID-19 – Wisconsin 4-H](#) for the FAQ and latest program guidance. ([www.4h.extension.wisc.edu/4-h-faqs-related-to-covid-19](http://www.4h.extension.wisc.edu/4-h-faqs-related-to-covid-19))

## Leaders

### Eau Claire County 4-H Leaders Association

**May 11, 2021  
6:30 PM**

### Agenda Items:

- 2021-2022 Budget Approval
- Plat Books
- Summer Camp
- Food Stand
- Farm Tech Volunteering
- Eau Claire County Fair

#### Join Zoom Meeting

<https://uwmadison.zoom.us/j/91034687970?pwd=U0xSeG1EVzRKcytleXlNdEFxd09sQT09>

**Meeting ID: 910 3468 7970**

**Passcode: 4HRocks!**

**One tap mobile**

**+13017158592,,91034687970# US (Washington DC)**

**+13126266799,,91034687970# US (Chicago)**

## 4-H On the Air Schedule



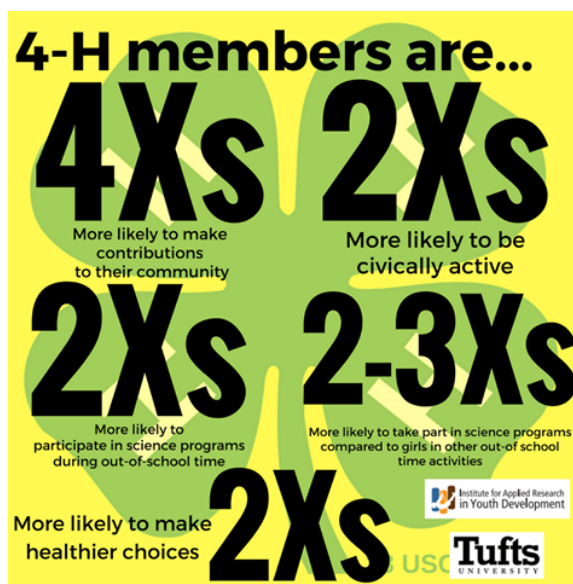
Club leaders! It's time to reserve a month for your club to do 4-H On the Air! Eau Claire County is the first Saturday of the month,

Please contact Andy at the Extension office by calling 715-839-4712 or email [Andy.Heren@co.eau-claire.wi.us](mailto:Andy.Heren@co.eau-claire.wi.us) to reserve your month. We will need the club name, contact person, and phone number and email.

Thanks!

### 1st Saturday Of The Month

Month	Club	Contact
<b>June</b>	Russell Corner Badgers	Jill Welke
<b>July</b>	Pleasant Valley Clovers	Wendy Duerkop
<b>August</b>	Rodell Busy Bees	Amanda Robinson
<b>September</b>	Eau Claire Adventurers	Amy Hahn
<b>October</b>	Pleasant Hill Go Getters	Jodi Thesing-Ritter
<b>November</b>	Little Red Cardinals	Penny Helwig
<b>December</b>	Pleasant Valley	Heather Iverson



## Broadband Test

In partnership with [Measurement Lab](#), the DPI invites residents to test their home internet speeds [using M-Lab's speed test](#). Data produced by the test provides broadband planning groups additional information to target improvements where internet performance is poor.

"By simply taking a few seconds to test their internet speed, Wisconsinites can help us close the digital equity gap in our state," said DPI Assistant State Superintendent of the Division for Libraries and Technology Kurt Kiefer, a member of the [Governor's Task Force on Broadband Access](#). "The data will help determine where improvements to internet need to be made and is essential to ensuring high-quality learning for all children."

## 2021 Foods Revue Registration Form

*The Foods Revue will be held on Sunday, May 16, 2021. Location/Details to be determined. Registration will be at 1:30 p.m. with the judging starting at 2:00 p.m.*

This form must be postmarked or dropped off at the Extension Office on or before May 10, 2021.

Your entry **MUST** include your recipe and your menu (if required for your entry).

**LATE OR INCOMPLETE ENTRIES WILL NOT RECEIVE FAIR PREMIUMS.**

NAME \_\_\_\_\_ AGE \_\_\_\_\_ GRADE \_\_\_\_\_

ADDRESS \_\_\_\_\_

CITY \_\_\_\_\_ ZIP \_\_\_\_\_ CLUB \_\_\_\_\_

DEPT \_\_\_\_\_ CLASS \_\_\_\_\_ LOT # & DESCRIPTION \_\_\_\_\_

\_\_\_\_\_ THE RECIPE WHICH I WILL PREPARE ON MAY 16 IS ATTACHED, AND I HAVE DOUBLE-CHECKED IT FOR ACCURACY

\_\_\_\_\_ Except if I am a Cloverbud or Explorer. I have included my menu for meal or full day as required with this entry.

*This is a fair entry. You **MUST** enter Foods Revue again when you enter projects for the fair to get premium!*

The following adult or youth leader would like to help at Foods Revue:

Name \_\_\_\_\_ Phone \_\_\_\_\_

E-mail address \_\_\_\_\_

***Return to: Eau Claire County Extension Office, 227 1<sup>st</sup> Street W, Altoona, WI 54720  
by May 10***



# REGISTRATION OPEN!



4-H SUMMER DAY CAMP SERIES 9AM-4PM

JUNE 7-10 grades 3-8 (\$25\*)

JUNE 8-9 grades K-2 (\$15\*)

Pleasant Valley Community Center

Eau Claire and Dunn County 4-H are excited to offer a series of day camps as our Summer Camp option this year. We hope you join us! We have wonderful young people excited to be camp counselors.

We will play games, learn, make crafts, perform skits, make new friends, and most importantly, HAVE FUN!

Go to [v2.4honline.com](https://v2.4honline.com) and login to your account. Click "Events" to register.

We will be following State and County public health guidelines. Masks are required to be worn inside buildings and when we cannot keep ourselves 6 feet apart. Snacks will be provided. We ask you to pack your own lunch. **Registration closes May 31.**

\*Price listed is for Enrolled 4-H Members. Non-members are welcome, but will be charged an additional \$10

# Dairy, Livestock, and Meats Judging Teams

Hello Livestock, Dairy and Meats projects 4-H Members and Leaders -

We appreciate everyone's patience as the State 4-H program has been working on pulling together details for summer 4-H events. **The GOOD NEWS - it is time to get a team together and start practicing for Dairy Judging, Livestock Judging and Meats Judging.**

We are excited to announce some dates for you to add to your calendars for summer events.

## **Dairy Judging - Teams will choose one of the two dates and locations listed below.**

June 16 - Dairy Judging - Marathon County

June 22 - Dairy Judging - Jefferson County

Junior and Senior Divisions will run at the same time, unlike Livestock judging plan as listed below.

Dairy judging events at each site above will act as qualifying events for the State Dairy Judging Contest.

Bookmark and check back to this website for updates.

<https://4h.extension.wisc.edu/opportunities/statewide-events-and-opportunities/area-animal-science-days/>

## **Livestock Judging - only one contest for 2021**

June 22 - Jefferson County

We plan to run an AM Session for Senior Division teams and a PM Session for Junior Division teams.

This contest will also serve as the state qualifier for senior teams to move onward to the national competition.

Bookmark and check back to this website for updates.

<https://4h.extension.wisc.edu/opportunities/statewide-events-and-opportunities/area-animal-science-days/>

## **Meats Judging**

Date and location will be announced soon...

Meats judging will occur sometime in June.

This contest will also serve as the state qualifier for senior teams to move onward to the national competition.

Bookmark and check back to this website for updates...

<https://fyi.extension.wisc.edu/youthlivestock/programs/4hmeatscontest/>

## **Guidance for in person team practices**

We know you are all committed to the many educational benefits of these activities, so you may already be meeting with your teams or working together in other ways. As you prepare to meet, we encourage you to start by checking out the many resources on the [4-H COVID FAQ](#) page.

Here are the basics for in person practices:

To meet in person, please check in with your county 4-H Educator. County 4-H Educators will help you navigate state, local and 4-H guidelines.

When meeting in person

- Groups of 20 or less should be created. Each group should be at least 20 feet apart.
- Maintain 6 feet of distance physical between participants within the same group
- Face coverings worn by everyone

Limit multiple points of contact (cleaning shared materials, no sharing of food, etc.)

## **Quiz Bowl and Skill-a-thon Updates**

- **4-H Livestock Quiz Bowl and Skill-a-thon will not be held in 2021.**

o These events were held in 2020 before the COVID pause on programming. Those 2020 winning senior teams will represent Wisconsin at the 2021 National 4-H Events.

o **Dairy Quiz Bowl will not be held in 2021.** We do not currently have the staff capacity for this event. We hope to resume this programming opportunity in the future.

# TRACTOR SAFETY



Tractors are a valuable part of any farm business but can be unsafe if employees are not prepared with the right training. This course offers basic farm safety skills, proper tractor operations, connecting and using implements, and more. Get the job done more safely and efficiently!

Twelve-year-olds are eligible for a State of Wisconsin Certificate to drive tractors for their parents. Youth ages 13 and older are eligible for a Federal Certificate on their 14th birthday, allowing them to drive tractors for an employer. Youth involved in hazardous occupations other than on a farm operated by their parents must have a Certificate of Exemption from these regulations to engage in such employment.

*\*Eligible students must be 12 years old or older prior to the beginning of the course.*

## COURSE DETAILS

Date: Monday, June 14 - Wednesday, June 16, 2021

Time: Monday: 8 a.m. - 12 p.m. (in-person training & driving)

Tuesday: 8 a.m. - 4:30 p.m. (in-person training & driving)

Wednesday: 8-10 a.m. (in-person training & driving)

Wednesday: 10 a.m. - 12 p.m. (in-person testing & drive test)

*\*Additional independent study will be required outside of class.*

Cost: \$100

Registration closes Monday, June 7, 2021

## ADDITIONAL INFORMATION

- Emergency Services Presentation
- Electrical Power Distribution Energy Presentation
- Tractor Controls and Checks
- Using Three-Point and Power Take-Off Connections
- Safe Materials Handling

## DEVELOP YOUR SKILLS

- Farm Safety Basics
- Proper Tractor Operations
- Connecting and Using Implements
- Identifying Agricultural Hazards

## REGISTER TODAY

// Visit: [cvtc.edu/tractorsafety](http://cvtc.edu/tractorsafety)

// Email: [bchristianson16@cvtc.edu](mailto:bchristianson16@cvtc.edu)

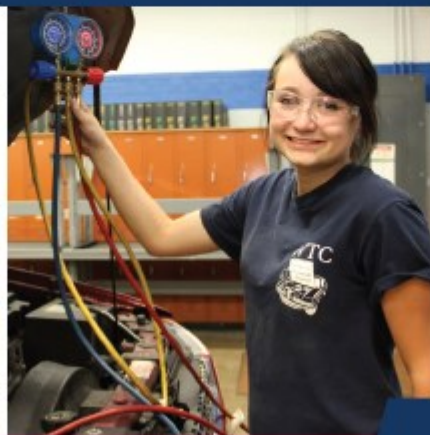
CVTC does not discriminate on the basis of race, color, ethnic origin, sex, disability, or age in employment, admissions, programs, or facilities. Sexual harassment and Title IX compliance policies only for students in: Director of Human Resources • 1000 Valley Street • Stevens Point, WI 54481 • 715.442.1111 • 715.442.1111 • 1000 Valley Street

Visit [www.cvtc.edu/tractorsafety](http://www.cvtc.edu/tractorsafety) to sign up!



# CVTC HIGH SCHOOL TRANSPORTATION CAMP

JUNE 28-29, 2021 | 9 A.M. – 4 P.M.



[cvtc.edu/Camps](https://cvtc.edu/Camps)

**CVTC**

## CVTC HIGH SCHOOL TRANSPORTATION CAMP

CVTC and local high schools have partnered to offer students an opportunity to explore numerous exciting careers available in the rapidly changing transportation industry. This camp will explore the basics of our Truck Driving, Diesel Truck Technician, Automotive Maintenance Technician, Auto Collision Repair & Refinish Technician, and Motorcycle, Marine & Outdoor Power Products Technician programs here at CVTC. Hands-on labs and activities lead by instructors who worked in industry will provide an opportunity to see what these career areas are really about. Our hope is that through this camp we can give high school students a chance to navigate their interests and career options to develop the most successful, individualized career path.

JUNE 28-29, 2021 | 9 A.M. – 4 P.M.

- CVTC Diesel Education Center & CVTC Business Education Center\*
- Available to high school students ages 15 and up
- \$25 per camper

\*See [cvtc.edu/Camps](https://cvtc.edu/Camps) for addresses

**READY TO REGISTER?**

// [cvtc.edu/Camps](https://cvtc.edu/Camps)

CVTC is an equal opportunity institution. We do not discriminate on the basis of race, sex, age, disability, or other protected characteristics in our programs, services, or activities. For more information, please contact the Director of Human Resources, CVTC, 1000 Highway 101, Suite 101, San Jose, CA 95128. (408) 293-1100. © 2021 CVTC



# “Capture What’s Great in Midwest States” 4-H Photography Challenge Rules & Submission Guidelines

Eligibility: Open to youth in grades K-13 in Illinois, Indiana, Iowa, Kansas, Michigan, Minnesota, Missouri, Nebraska, North Dakota, Ohio, South Dakota, Wisconsin

Register at: <https://z.umn.edu/Midwest-states-photo-reg>

\*Youth must be enrolled in their state 4-H program.

## Challenge summary

Highlight something that stands out about your town, county, state or travels to another Midwest state. There are a lot of hidden gems around the Midwest so get out and capture them.

## Submission guidelines

Choose up to three (3) of your best pictures. Submit up to three jpg or jpeg images via email to [fourhphoto@umn.edu](mailto:fourhphoto@umn.edu) by 11:59 p.m. (CST) on June 30, 2021. In the email, use the subject line “4-H Midwest Photo Challenge” and in the body, please include the child's name, grade and state. Once your email submission has been received and your registration verified, you will receive a confirmation email.

Submitted photos will be displayed in a slideshow. Volunteer photography judges will provide feedback and recognize the top quality images. All participants will have their names entered in a random drawing for prizes.

Be creative! Show what makes the Midwest states great! Subject matter is OPEN to all things Midwest!

**Continued on next page**



## Tips for better photographs

- \* Landmarks can be an awesome way to show off your hometown or state. Some landmarks like Mount Rushmore or the Mall of America are known worldwide; how can you show it in an unique way? There might be other landmarks, nature areas or historical sites that are only known to locals and should be seen by many other people.
- \* Here are a few tips that may be helpful for this challenge:
  - Try to stand at an angle from a building, a statue or large equipment and include three sides so the viewers can tell that it is three dimensional.
  - Watch the backgrounds for extra clutter. Can you move to the left or right or higher/lower to eliminate clutter or unnecessary objects veering out from behind your subject.
  - Move in close to your subject to eliminate items that are not a part of the story you wish to tell, but not so close that you cut off part of it. Show the whole person including their feet or purposely just their head and shoulders.
  - It's okay to have people/cars in your landscape pictures to show how big or how far away the landscape is. They often add a point of interest for your eyes to land on.
  - If there is an object that could move in your picture, be sure to have more space in front rather than behind the object so it looks as if it has room to move forward (e.g. car, animal, person running or batting a ball).
  - Be respectful of monument, attraction and facility rules.

## Build your skills with these resources

[4-H Photography Curriculum](#)

[Minnesota 4-H Photography project page](#)

[Tips for landmark and monument photography](#)

Questions? Email [fourhphoto@umn.edu](mailto:fourhphoto@umn.edu)

# Virtual Learning Community Opportunities to Teach & Lead

## \*Virtual Learning Community – Opportunity to Teach and Lead in 2021

Across the Division of Extension we have been learning and improving our transition to virtual spaces. You haven't heard from the Virtual Learning Community since our Summer Virtual Learning Community, but Positive Youth Development in virtual spaces has continued to grow and develop. Since summer we've been building out virtual opportunities and had over 500 people registered for our first ever Virtual Fall Forum AND hundreds of volunteers registered and participated in our Virtual Annual Leader Trainings. In order to continue building out a community of learning around the state, **we need Youth Leaders and Adult Volunteers!**

Below are some commonly asked questions:

### **Why are we inviting YOU?**

We have BIG DREAMS:

- provide high, quality virtual opportunities for youth and families across the state, **Kindergarten-13<sup>th</sup> Grades and Adults**
  - involve **YOUTH and adult leaders, staff and community partners** in facilitating planned activities
- provide **additional promotion** for programs that are being offered across the state

### **What type of content are you looking for?**

We are looking for project area content, leadership trainings and open spaces for youth to engage and connect around other topics/areas of interest. If you have an interest or passion and are willing to share it with others, we'll help make it work in a virtual space.

### **Does the session need to be new?**

Nope. We know that many participants were just getting to know the calendar and as they did never attended all the sessions that might have interested them. Also, if you're like us, you've been learning and tweaking. If you have a program that you have already offered and are willing to offer it again, please do!

### **Can I submit more than one session?**

Absolutely! We all know that virtual programs are most effective in 40 minutes, so if you have too much content for one session, a series is great. We've also learned from our evaluation that participants enjoy seeing each other more than once and recognizing faces and names.

### **Is there a deadline to submit?**

Nope. Programs are needed ongoing! Submission dates are weekly. After you submit, sessions will be reviewed by a committee of youth leaders, volunteers and staff using our Positive Youth Development learning review process adapted for virtual learning.

### **I would like a little more information about Virtual Learning Community before I submit. Where can I go?**

Fair enough. With the lessons learned, we have a new submission process, facilitator support resources, a uniform registration process, evaluation process and a plan for promotion and marketing. Our website can be found at <https://4h.extension.wisc.edu/virtual-learning-community/>.

— Continued on next page



## Virtual Learning—Continued from pervious page

### Okay! I'm convinced. Where do I submit?

Submissions can be made at: [https://uwmadison.co1.qualtrics.com/ife/form/SV\\_2idXsm8tPCVGILz](https://uwmadison.co1.qualtrics.com/ife/form/SV_2idXsm8tPCVGILz).

With the easy to use back button, you can explore the submission form to learn a little more about the types of sessions and content.

### What happens after I submit?

Our committee will respond to submissions with a follow up e-mail or call to the primary contact within a week.

The Virtual Learning Community knows how important supportive relationships within youth development spaces are to creating community, valuing youth voice and empowering action in our communities. We are committed to ensuring that anyone who wants to find an engaging, educational, and FUN online connection will be able to do so easily. We hope you will help us make it happen.

*In closing, as we wrap up 2020, we want to celebrate so many of you for being a part of our programming. It has not been an easy year, but we appreciate all of you continuing to engage and "learn by doing."*

*Looking forward to connecting with even more of you in 2021!!*

# EAU CLAIRE COUNTY



**THE FUTURE OF FARMING IS HERE!**

Calling all 4-H Families! We need your help! The 4-H Leaders Association will be staffing Food Tent #1 at the 2021 Farm Technology Days. We need 40 volunteers each day- July 20-22. We plan to use the funds raised from this fundraising opportunity to help support youth development programming including trips for our 4-H youth. We hope every family in our 4-H program will volunteer for at least one shift. You can sign up at: <https://www.signupgenius.com/go/9040f4baaac2ca7ff2-food>

Please visit the sign up TODAY to register for your shift!

## Free Roosters

I'm hoping to help out students in 4-H who show animals. I have 2 Roosters (mild mannered), one being an Olive Egger and the other a Black Copper Maran. Do you have any students that would be interested in 'inheriting' these two? Being a teacher, I'm all about giving back to the community!



Olive Egger (the frostbite is gone from his comb)



Black Copper Maran (frostbite is gone from comb)

*Stephanie McSharry*  
Fall Creek Middle School  
RTI Coordinator  
Grade 6

## 2021 Fair Book Correction

We have found an accidental omission in the 2021 Fair Book. Under 18-A, Cultural Arts, YA, Creative Work, Lot 32, Any Other, was accidentally deleted. Please make note of that.

It will be in Fair Entry when you go to enter.







## Volunteering: How Can You Help?



Credit: Ben Hoppe

Volunteers are a huge part of the success of 4-H and help make 4-H possible. 4-H volunteers can serve as club leaders, project leaders, chaperones, and other roles. While the experience level of volunteers varies, our volunteers have one thing in common: wanting to make a positive difference in the lives of young people. In addition to making a positive impact with youth, 4-H volunteers gain important life skills of their own and also impact the communities in which they volunteer.

### Becoming a 4-H Volunteer

To ensure volunteers in the 4-H program are prepared and to protect the safety and best interests of 4-H members, all 4-H volunteers who are 18 years of age and older who are no longer members go through a process which includes:

1. Participate in training to help you serve in your role. This training is called Volunteers in Preparation,
2. Have a background check.
3. Agree to conduct yourself in a way that positively represents 4-H.
4. Learn how to keep our youth safe by taking a Mandated Reporter Training.



Credit: Eva Terry

To get started on your volunteer journey, contact your local 4-H educator.

### Wisconsin 4-H Volunteer Roles

There are many ways to volunteer in 4-H. All volunteers work with youth and adult volunteers to offer a positive youth development experience for youth. Wisconsin's 4-H program has six main roles for volunteers.

- Activity/Event Volunteers lead or organize a 4-H activity or event.
- Adult Advisor/Chaperones work with 4-H educators to chaperone a 4-H educational experience.
- Club Enrollment Coordinator leads and supports enrollment in a club or group.
- Club Leader provides leadership for a club or group organization.
- Committee Volunteers help lead or participate as a member of a committee.
- Project Leaders provide leadership and organization to a group learning about a specific topic.

There may be additional trainings to volunteer in some of these roles, for example a WI 4-H Shooting Sports Leader

### Can I help without volunteering?

Not everyone feels ready to become a 4-H volunteer. Check in with your club leader or local 4-H educator to find out other ways you can still make an impact on the program without serving 4-H in an official capacity. This might mean providing no-contact support in a warm welcoming way such as bringing a healthy snack, set up and clean up, etc. Any help you give makes the experience more positive for everyone.



Have a minute? Please  
provide feedback by filling out  
this [5-question survey](#)







## Helping Hands

The 4-H pledge talks about using your hands for larger service. Not only can you use your hands to help your club through leadership and teaching, but you can use your hands to help your community too! 4-H members are known for helping their community through service. Plan your own community service project by answering the questions below!

### Who needs (or would benefit from) help?

Choose an organization (example: animal shelter or food pantry), group of people (people who are elderly), or a person who you'd like to help (a neighbor).

---

### How can I help?

List skills (example: art or building), interests (being outside), or abilities (talking to other people) that you want to use to make a difference.

---

---

### What tasks need to get done?

Match the "how" with the "who"! Write what you need to do to complete your project and the supplies you'll need to accomplish it. (Example: If you are creating cards for people in a senior living facility, you will need to contact the facility, gather writing supplies, create the cards, and deliver the cards.)

---

---

---

---

---

### How did it go?

After you've done your community service project, reflect on how things went and how you might do things differently if you did it again. What went well? What could be better?

Almost every club does a community service project. At your next club meeting, ask a club officer or your club leader what project your club is doing this year!

Exploring 4-H for New Families is developed by Heidi Vanderloop Benson, Chippewa County 4-H Program Educator and Ben Hoppe, Brown County 4-H Program Educator, UW-Madison Division of Extension.

An EEO/AA employer, University of Wisconsin-Madison Division of Extension provides equal opportunities in employment and programming, including Title VI, Title IX, the Americans with Disabilities Act (ADA) and Section 504 of the Rehabilitation Act requirements.



**SPREAD THE WORD, NOT THE PLANT**

## **INVASIVES MONITORING PROGRAM (IMP)**

Join LCIP in locating invasive and native plants in our local communities. You will help us to promote best maintenance practices of our public and private roads and lands.



**Are you looking for a way to engage and support your community this year?**

**We are looking for citizen scientists willing to learn how to map local invasive and native plants with personal help from a LCIP member**

### **Initial Virtual Training**

*May 4th, 2021*

*1 – 3:30 PM on Zoom*

### **In-Field Training**

*May 6<sup>th</sup> 1 – 4 PM OR May 8<sup>th</sup> 9 AM – 1 PM*

**Free training and monitoring materials**

**Class size limit is 20, so reserve your spot today!**

**Register by email or phone at [lcipchris@gmail.com](mailto:lcipchris@gmail.com) or 715-539-2766**

[lcinvasives.org](http://lcinvasives.org)



**LCIP**  
LOWER CHIPPEWE  
INVASIVES PARTNERSHIP

[facebook.com/LCIP2011/](https://facebook.com/LCIP2011/)

**OPPORTUNITY TO DEVELOP YOUR SKILLS AND GIVE BACK TO OUR COMMUNITY**

Reminder:

YQCA



# Requirements

Youth for the quality care of animals, YQCA is a mandatory requirement for all exhibitors showing any Beef, Dairy, Goat, Rabbit, Poultry, Sheep & Swine at the Eau Claire County Fair 2021.

***The cost is \$12.00.***

***All species certificates need to be  
email to: Tammy Schlewitz***

***BY JULY 1st.***

***[eccountylivestockproject@gmail.com](mailto:eccountylivestockproject@gmail.com)***

**WEBSITE: [YQCA.LEARNGROW.IO](http://YQCA.LEARNGROW.IO)**

Made with PosterMyWall.com



## Youth for the Quality Care of Animals (YQCA) Fact Sheet

In the fall of 2017, Wisconsin replaced the MAQA (Meat Animal Quality Assurance) state program with the Youth for the Quality Care of Animals (YQCA) national program. This new and interactive program provides youth a number of options for an annual quality assurance youth certification. YQCA was created for youth in the Beef, Dairy, Goat, Poultry, Rabbit, Sheep, and Swine projects.

YQCA provides a common framework for food animal quality assurance programs which:

- ☐ **Strengthen the youth educational experience,**
- ☐ **Improve the care of food animals, and**
- ☐ **Promote a higher level of consumer food safety.**

This program allows youth to learn about other species of animals; not just the species they show. This program allows for the consistency of information being taught to youth in all states and in all species of animals.

YQCA content and modules demonstrate a progression of topic knowledge in designated age categories (Age as of January 1):

- ☐ **Junior (8-11)**
- ☐ **Intermediate (12-14)**
- ☐ **Senior (15-18)**
- ☐ **Young Adult (19-21)**

Each year, youth complete one new module in each the following categories:

- ☐ **Animal Welfare** (basic needs, proper animal handling, biosecurity, etc.),
- ☐ **Food Safety** (medications, medicated feeds, withdrawal times, avoiding residue, etc.)
- ☐ **Character Education** (ethics, goal setting, career exploration, etc.)

YQCA gives families more flexibility in gaining this required certification, which is more convenient to accommodate busy seasonal schedules. It's estimated that youth will spend roughly 60 minutes completing modules each year. Participating in the online program also saves money on fuel and food costs that can come with attending trainings.

YQCA illustrates the next generation of learning and can be offered to youth in a couple of ways:

1. **Online curriculum** - a youth exhibitor annually will complete three interactive online modules and corresponding quizzes. This is available 24/7 which allows exhibitors flexibility to take the course at their convenience.
2. **Face to face** - Trainer led program by either Extension personnel, Agri-Science teachers or veterinarians that have gone through a certification training.
3. **Online Exam** – upon passing an online youth member can achieve more than 1 year of certification.

YQCA replaced Wisconsin's MAQA program and the National Pork Board Youth PQA program, both of which are no longer in existence. Wisconsin 4-H and FFA leaders are pleased to share their joint support of this program which was implemented in Wisconsin starting in the fall of 2017. In addition, Wisconsin State Fair and other national exhibitions required certification in YQCA for participation in 2018.

### Why quality assurance education?

- ☐ The livestock industry and business are constantly striving for high quality, wholesome products.
- ☐ All species organizations have quality assurance programs. BQA, FARM (Dairy), PQA, etc.
- ☐ Consumers are more interested in how and where their food is produced.
- ☐ United States exports a lot of pork and beef. If there is a poor experience, that market is lost and it impacts the whole industry.



### Value of Quality Assurance Education?

- ☐ Most county programs provide education around grooming, showing and feeding. Very few offer specific information on the day to day management of animals, their facilities and their needs.
- ☐ This program also shares information related to sportsmanship, telling your story and young adult topics such as, stewardship, careers and hot topics in agriculture.
- ☐ Exhibitions and their partners value this education to minimize the incidence of unethical practices.
- ☐ Youth and parents are further removed from agriculture and how animals are raised and cared for.
- ☐ Need for consistent information from state to state.
- ☐ Wisconsin and Nebraska research indicates youth learn and put into practice what they gather from quality assurance education.

### What is the cost?

- ☐ \$12/person/year for the online modules that are different each year.
- ☐ \$3/person/year for the face to face trainings.

### Why the Cost?

- ☐ Online education increases cost due to managing the learning platform, however it increases the fun for the user and learning outcomes are greater.
- ☐ Development of creative modules where the information stays current.

### Is YQCA required?

- ☐ Wisconsin State fair requires YQCA for Junior exhibitors for Beef, Sheep, Swine, Goats, Dairy, Poultry and Rabbits.
- ☐ This certification is highly encouraged for all youth in the aforementioned animal projects in Wisconsin.
- ☐ Counties should require YQCA!
- ☐ Processing plants & marketing channels require it.
- ☐ State fair, national junior swine association shows and other national shows require it.
- ☐ Conversations occur on further requirements.
- ☐ This is an annual certification.

### Special features:

- ☐ The program was heavily peer reviewed and reviewed for youth age appropriateness.
- ☐ The online system gives youth options to receive the material. The system will read the material to youth so they can hear it.
- ☐ Coupons can be purchased to minimize the cost. Examples are: Producer groups, leader's councils, FFA alumni programs, etc.

### Access to the program both online and face to face:

- ☐ Log into <http://yqca.org>
- ☐ Follow the step by step instructions.

You can keep up with Wisconsin YQCA by going to <http://fvi.uwex.edu/youthlivestock/yqca> or by following the Wisconsin Youth Livestock Program Facebook page.

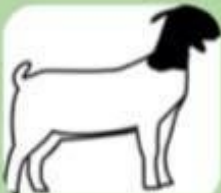
Bernie O'Rourke can be contacted by email at [borourke2@ansci.wisc.edu](mailto:borourke2@ansci.wisc.edu).

**Updated: 11/7/2019**





# NSC 2021 Livestock Shows



**Saturday,  
May 22nd, 2021**



## **Breeding Goat Show**

(Meat, Dairy/Meat Cross & Dairy Breeds)

- ~ Does (Kids to Mature)
- ~ Bucks (After January 1)
- ~ Market Goats (By Weight)

## **Breeding Sheep Show**

(Registered & Wether Type)

- ~ Ewes (Lamb to Mature)
- ~ Rams (Lamb to Yearling)
- ~ Market Lambs (By Weight)

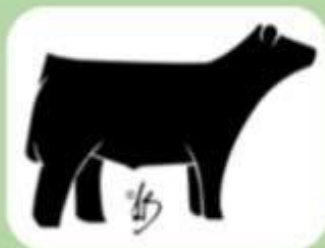
### **Pierce County Fairgrounds**

364 N. Maple Street  
Ellsworth, WI 54011

Due to COVID-19 there is a limit to the number of people on the fairgrounds. All exhibitors will need to be pre-entered with the information on the Northern Show Circuit Facebook page. Day of Show entries MAY NOT be accepted.

If you have any questions visit our Facebook Page or call John at 715-684-9529

**Sunday,  
May 23rd, 2021**



## **Beef Show**

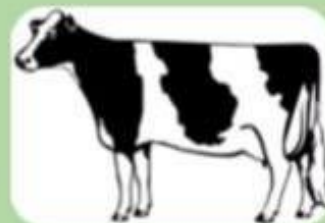
(Open to All Breeds)

- ~ Heifers (Calf to Yearling)
- ~ Cow/Calf Pairs
- ~ Bulls (After January 1, 2020)
- ~ Market Steers & Heifers (By Weight - Beef, Dairy, Beef/Dairy)
- ~ Prospect Steers/Bulls (After January 1, 2021)

## **Dairy Show**

More info to come

Watch Our Facebook Page  
for the full class list



# New!

# Raffle

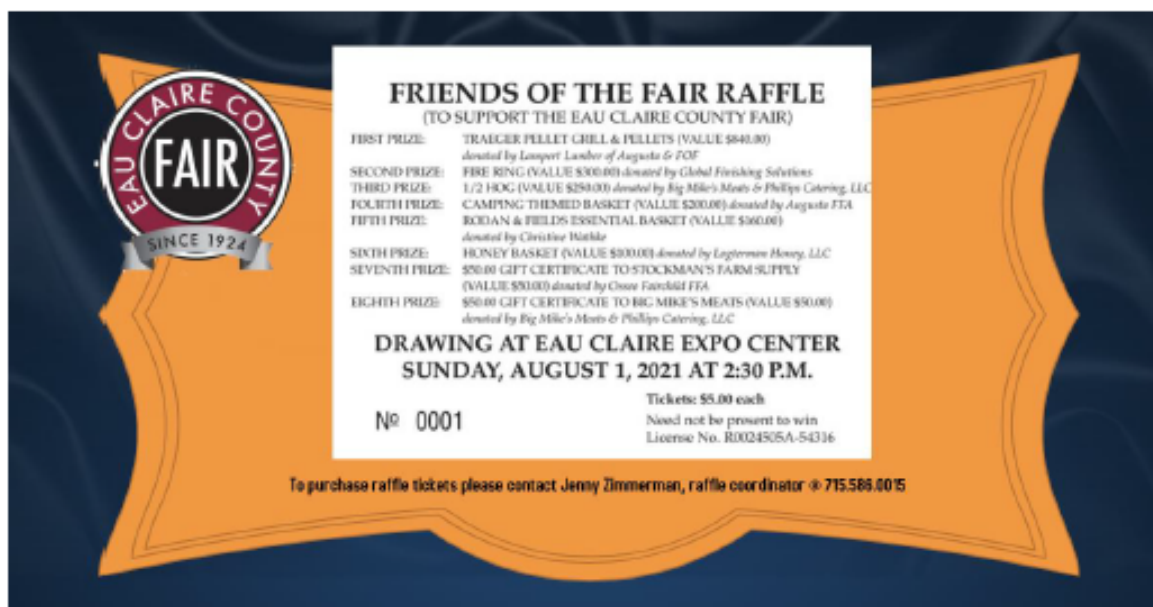
## Eau Claire County Fair

July 28 – August 1, 2021

### Tickets \$5 each

Drawing: Sunday, August 1 at 2:30pm

Need not be present to win



Each family who is exhibiting at the 2021 EC Fair, will be asked to do ONE of the following:

1. Sell/buy 5 raffle tickets (5 tickets at \$5 each = \$25)
2. Give a monetary donation of \$25
3. Provide a donation item for the silent auction, valued at \$25 or more

Tickets have been distributed, through a variety of ways. If you have not received your packet, wish to get more raffle tickets, or have any questions, please contact: Jenny Zimmerman – [jenzimmerman3@gmail.com](mailto:jenzimmerman3@gmail.com) or 715-586-0015

**Deadline: June 1** Please return your half sheet, tickets, and payment to Jenny Zimmerman (self-addressed envelope). Contact Jenny to make other arrangements if needed.

*Thank you to those who have already returned their packets and purchased raffle tickets. Friends of the Fair appreciate your support!!*

0 x 11.00 in



# Eau Claire County Friends of the Fair

---

**Our Mission:** To secure the resources needed to provide the financial stability that will assure the future of the Eau Claire County Fair as a family and youth focused community event.

---

A message from the Eau Claire County Friends of the Fair,

The Friends of the Fair (FOF) has worked tirelessly to ensure that the youth of Eau Claire County are able to participate and exhibit projects to show what they have accomplished over the past year. In order to achieve this goal and meet our mission, FOF annually strives to secure the financial support necessary to successfully host a fair. This couldn't be done without support, in-kind donations, sponsorships from businesses, community members, non-profit organizations, area grants, and by individuals and families who believe in supporting the youth.

In the past, FOF held a golf outing and dinner to help off-set the cost of the fairgrounds and raise funds for all expenses. More recently, a silent auction and raffle have been the main fundraising events and have been a huge success for FOF and the fair by covering the annual expense of the fairgrounds (typically \$5,200 per year). With changes taking place with the County and Extension relationships, as well as the Covid-19 mandates that are in place, financial support for the fair this year will need to look a little different. This year, to put on the fair, FOF is asking each exhibiting fair family for support.

**Each family will be asked to do ONE of the following:**

1. Sell/buy 5 raffle tickets (5 tickets at \$5 each = \$25)
2. Give a monetary donation of \$25
3. Provide a donation item for the silent auction, valued at \$25 or more

**\*\* See enclosed slip for instructions\*\***

Friends of the Fair understands these are difficult times for everyone. They, along with the Fair Committee, continue to look for cost saving measures through all aspects of the fair and follow up on any possible leads for donations and support, while continuing to host a high quality, youth and family focused event.

The FOF and the Fair Committee would also ask for families to volunteer at the fair. Volunteering helps reduce costs and is a great way to support the fair.

For our youth, the county fair fosters life skills, leadership, emotional and social development, and strength in family, amongst other important aspects. These benefits and elements, both direct and indirect, have been a tradition at our fair and are the reasons we are working tirelessly to continue to offer this experience to our youth.

Get involved and support the fair, while supporting our youth!

Thank you,

Eau Claire County Friends of the Fair Board & Committee





# Eau Claire County Friends of the Fair

**Our Mission:** To secure the resources needed to provide the financial stability that will assure the future of the Eau Claire County Fair as a family and youth focused community event.

Family Last Name: \_\_\_\_\_

Name(s) of Youth Exhibiting in Family: \_\_\_\_\_

Address: \_\_\_\_\_

Please indicate which option your family will participate in. Select ONE:

- ☐ Buy/Sell \$25 worth of raffle tickets (5 tickets total at \$5 each)  
5 tickets are enclosed  
Fill out raffle tickets, write check payable to: Friends of the Fair  
Send to or drop off with Jenny Zimmerman at address below
- ☐ Donate \$25 to Friends of the Fair to cover 2021 Fair Expenses  
Return the unsold raffle tickets  
Write check payable to: Friends of the Fair  
Send to or drop off with Jenny Zimmerman at address below
- ☐ Provide an item for the Silent Auction, valued at \$25 or more  
To be dropped off at the Eau Claire Co Expo building on Wednesday, July 28, 2021  
List what you intend to donate: \_\_\_\_\_
- ☐ Check here if you wish to sell/buy additional raffle tickets.  
Please indicate how many you would like \_\_\_\_\_

**Mail this completed slip, raffle tickets (sold & unsold) & payment to:**

Jenny Zimmerman (FOF Raffle Coordinator & Secretary)

S15405 County Road R

Osseo WI 54758

715-586-0015

[Jenzimmerman3@gmail.com](mailto:Jenzimmerman3@gmail.com)





Greetings:

The Eau Claire County Fair Committee is excited to share our decision to move forward with the expectation of holding as much of the 2021 Eau Claire County Fair as possible. Regardless of what portion of the Fair may be held, we plan to provide a 2021 Fair experience for our exhibiting youth. We will be taking all required precautions to make the Fair safe for our exhibitors, volunteers, and judges as we move forward with preparations. We look forward to seeing our exhibitors and their projects at the 2021 Eau Claire County Fair!

Exhibitors that the 2020 Showcase would have been their last year showing will be allowed to exhibit one additional year at the 2021 Fair.

Updated Fair Books will be available March 15, 2021.

Fair Entry will be available May 1 – June 4, 2021 on Fair Entry.

Watch for updates: the Eau Claire County Fair Facebook page,  
in the 4-H Cloverleaves, and the Friends of the Fair website  
<http://eauclairecountyfair.com>

If you have any questions, please contact [eauclairefair@gmail.com](mailto:eauclairefair@gmail.com)

## **Fair Sponsorship**

If you would like to be a sponsor of the Eau Claire County Fair, please see the last three pages of the *Clover Leaves* for the information and forms! Thank you for your support of the Eau Claire County Fair!

# Club Minutes



## Maple Drive Boosters

The meeting began at 6:39 pm on April 12, 2021. A new template for the secretaries report was included in the email sent out by Lisa. An ice breaker was first led by Karah. Then pledges were a club effort, mostly led by Karah. Roll call was next and members present shared what they did over spring break. The secretaries report was given by Avery. After that the treasurer's report was announced by Karah. Recognition took place and not only members present were recognized but also members that were participating in 4-H related events tonight and were unable to be at the meeting. Along with that, Karah thanked those who sent her notes and gifts. Old Business soon followed, a big thank you to Katy Haworth for taking the job for 4-H on Air. New Business came along and we discussed the cans gathering on the 17th at 9:00 then postponed discussing the mowing and cans schedule until the next meeting. The wayside cleanup will have boxed lunches provided by the club, Mrs. Iverson will order these. General leaders notes were last and a new hotspot for meetings was suggested. Positive messages that were drawn either on chalk or on paper were then shared after the meeting.

## PVC April 2021 Meeting Minutes

Before the meeting we had a balloon creations activity led by Kevin Schwartz. The meeting was called to order by Allison and pledges were said. Roll call was taken by saying your favorite thing to plant. We did a birthday clap for Allison. Motion to accept the secretary's report was made by Emma W and seconded by Cierra. The treasurer's report was also read.

For old business we got an update on Friends of the Fair raffle tickets. There was no other old business. For new business we talked about upcoming May activities. The kindness rock painting will be at the Paint Shack for our May meeting on May 17th along with the 4-H in a box activity which will be a bird feeder recycling project led by the Thompson family starting at 6 pm. We will look into going hiking at Beaver Creek on Sunday May 23rd. For upcoming June events we will look at doing a tour at Nelson Dairy Farm and playing kubb. There was no other new business.

There was no youth leaders report. For the adult leaders report we were reminded that the deadline to add or drop projects in 4H Online is May 1st. Animal managerial forms are also due May 1st. Check the clover leaves for more information on Karl Petersen Competitive Shoot, Foods Revue (May 16th), 4-H Camp (June 7th-10th), and Clothing Revue (June 24th). Other things to put on your calendar are YQCA due July 1st, Farm Tech Days (July 20th-22nd), Eau Claire County Fair (July 28th-Aug 1st).

The motion to adjourn the meeting was made by Hailey and seconded by Beckett.

Respectfully submitted by Lindsay Duerkop

# Club Minutes

## Pleasant Valley Secretary Report April, 2021

Pleasant Valley 4-H Club held its monthly meeting on Thursday, the 15th of April at the Pleasant Valley Community Center. Before the meeting started Ava brought her goats for a demonstration. The meeting was called to order by President Rachel Anderson at 6:45 P.M. The pledges were led by Sophie. Our guest Leeza Norby shared some tips for photography including using your camera everyday, watching someone take pictures, and always print your pictures. We then celebrated April birthdays; Happy Birthday to Alex, Paige, and Alana. The Treasurer's report was sent out in an email. Hailey made a motion to approve the treasurer's report and it was seconded by Paige. Motion passed. The Secretary's report was sent out in an email and approved by the club. Alex made a motion to approve the secretary's report and it was seconded by Alana.

We then recapped old business. We are donating \$550 to the fair for trophies as our fair sponsorship. The new 4-H guidelines started April 1st to allow in person meetings. Old business was passed by Teegan and seconded by Alana.

We moved on to new business. Sydney and Anne shared about the friends of the fair raffle tickets you need to buy in order to show at the fair this upcoming year. You can either sell or buy them, send the money to Jenny Zimmerman; if you would like to buy more tickets contact Heather. In order to show animals at the fair overnight you will need to go to a YQCA meeting. Sheila talked about Project sign-up May 1st; go to 4-H online to change projects. New business was passed by Ava and seconded by Allisa.

The meeting was adjourned at 7:10 P.M. by Hailey and seconded by Teegan. The ending activity was potting bulbs in pots. Our next club meeting is Thursday, May 20th at 6:30 P.M. at Cleghorn Community Center.

Respectfully Submitted,  
Brooke Berg



# Club Minutes

## Eau Claire Clovers

Beth called the meeting to order. Marshal and miles said the pledges and Anna read the birthdays for the month. Cards were sent through the mail.

The secretaries report was sent out through Facebook. Marshall motioned and Miles seconded.

Sam read the treasures report. Piper motioned and Maddie seconded it.

The old business was fundraising at the festival, Updated fair books that are coming soon, and Francine talked about the detail on the Friends of the Fair raffle tickets. Marshall motioned and miles seconded it.

The Icebreaker Question was What show/movie would you like to be in as an actor.

The new business is an upcoming Shooting sports shoot April 24, summer camp discussion, and fair details found in the clover leaves. YQCA online training is now available online and the Meekes brought up an idea of a demo showcase.

Maddie also brought up the idea of participating in a beaver creek recycling challenge. Marshall motioned and miles seconded.

In the leaders report families were asked to sign up for 4-H online and they were also asked to sign up for projects. Families are also asked to make a page for the club record book. Hanna's theme was chosen for this year's fair: Better Together. The meeting was adjourned with Mattie motioning and piper seconding it.

Next month's meeting is on May 23.

### WISCONSIN YOUTH LIVESTOCK PROGRAM (WYLP) PRESENTS

.....

### EDUCATIONAL PROGRAMMING 2021

**January 14** - Roaming the Rumen

**February 11** - Feeding & Caring for Swine without  
Ractopamine

**March 11** - Lamb Live & Carcass Evaluation; Lamb  
Culinary products

**April 8** - Artificial Intelligence in Animal Sciences

**May 13** - Meat Science Cookery - making and cooking of  
meat products

**All events are virtual and begin at 7 p.m.**  
**Can meet county educational requirements.**



For more information & how to  
register: <https://go.wisc.edu/r3x8lh>





January 1, 2020

Greetings!

Since its first year in 1924, the Eau Claire County Fair has been an educational experience for patrons of all ages. This free and family focused event is held the last week in July, and truly has something for everyone. Visitors can enjoy the Classic Car Show, Cowboy Mounted Shooting Sports, Livestock Auction, Animal Exhibits, STEAM Day, Kid's Day activities on Friday and Saturday (*featuring a petting zoo, emergency vehicles, and safety displays*). Visitors can experience these and many more activities at the fair.

In an effort to create a more efficient sponsorship process for the Eau Claire County Fair, a streamlined application is furnished for your convenience. Sponsorship requests have been categorized for ease. This is an opportunity for you to contribute your support to the Eau Claire County Fair, with multiple levels available, including options to have your logo or name on the exclusive fair t-shirt for the 2020 Eau Claire County Fair!

None of these wonderful community opportunities would be possible without support from generous donors like you! The following page includes a breakdown of ways in which you can become or continue to be a partner in the future of the Eau Claire County Fair.

Sincerely,

Eau Claire County Fair Sponsorship Committee

**Eau Claire County Fair Legacy Partner:** (\$1,500+) You will receive all benefits associated with the Diamond Donors. Also, your company logo will be included beside your name on the official fair t-shirt and you will receive 5 complementary t-shirts for your support.

**Diamond Donors:** (\$1,000-\$1,499.99) Your name and company logo will be in color on the widely distributed fair brochure, included on our website and displayed on banners and event brochures throughout the fairgrounds. Your company name will be included on the official fair t-shirt.

**Platinum Donors:** (\$500-\$999.99) Your name will be listed in color on the fair brochure and included on our website and displayed on banners and event brochures throughout the fairgrounds.

**Gold Donors:** (\$250-\$499.99) Your name will be listed in color on the brochure and included on our website and displayed on banners throughout the fairgrounds.

**Silver Donors:** (\$100-\$249.99) Your name will be printed on our brochure and included on a banner during the fair.

**Bronze Donors:** (\$25-99.99) Your name will be listed with other generous donors on a banner during the fair.

If you are donating at a level that includes the promotion of your logo, please email your logo to [lisa@johnsonlitho.com](mailto:lisa@johnsonlitho.com).

**Questions?** Please contact one of the following Sponsorship Committee Members with any questions you may have.

Debbie Kitchen [\(715\) 579-4703](tel:7155794703)  
Cindi Syverson [\(715\) 864-7307](tel:7158647307)  
Lisa Vetsch [\(715\) 271-5015](tel:7152715015)



**Yes, I want to help the youth of Eau Claire County and support the Fair!**

Please find enclosed my donation of \$\_\_\_\_\_. I would like my donation to go towards: (Please check all that apply). *Sponsorships are confirmed on a first come first serve basis.*

- ☐ Tent Sponsorships
- ☐ Special Fair Events (*Please indicate if you wish to support a specific event at the fair*)
- |   |   |                                    |
|---|---|------------------------------------|
| <input type="checkbox"/> Classic Car Show               | <input type="checkbox"/> Kid's Day Activities         | <input type="checkbox"/> 4-H Day   |
| <input type="checkbox"/> FFA Day                        | <input type="checkbox"/> Open Class Beer/Wine Judging | <input type="checkbox"/> STEAM Day |
| <input type="checkbox"/> Cowboy Mounted Shooting Sports |   |                                    |
- ☐ In-Kind Donation (*Please specify the items donated and their value on the lines below*)
- Item:* \_\_\_\_\_ *Value:* \_\_\_\_\_
- ☐ Trophies/Ribbons/Fair Awards *If you wish, you may specify a category for the award you would like to sponsor on the line. (Ex. Computers, Natural Science, etc.)*
- OPTION #1* \_\_\_\_\_ *OPTION #2* \_\_\_\_\_
- ☐ Animal Awards
- |  |                                |   |
|--|--------------------------------|---|
| <input type="checkbox"/> Livestock ( <i>Beef, Sheep, Goat, Swine</i> ) | <input type="checkbox"/> Dairy | <input type="checkbox"/> Poultry/Rabbit |
|--|--------------------------------|---|
- ☐ Unspecified Monetary Donation (*Your generous donation will be applied as needed*)

Name: \_\_\_\_\_

Company Name (*If Applicable*): \_\_\_\_\_

Street Address: \_\_\_\_\_

City: \_\_\_\_\_ State: \_\_\_\_\_ Zip Code: \_\_\_\_\_

Phone Number: \_\_\_\_\_

Email: \_\_\_\_\_

Signature: \_\_\_\_\_

Please indicate your level of sponsorship (*Refer to the letter for levels*): \_\_\_\_\_

If donating as an Eau Claire County Fair Legacy Partner, please indicate t-shirt sizes for all 5 shirts.

\_\_\_\_\_

**Checks can be made payable to: "Friends of the Fair" and sent to:**  
P.O. Box 434 Augusta, WI 54722

We are asking that your donations be submitted by **February 28, 2020**. Payment must be submitted before your name or company logo will be added to fair materials. All proceeds will help with the continuation of the Eau Claire County Fair. Your support is greatly appreciated!

---