

Eau Claire County 4-H Clover Leaves



January 20, 2026

Contratulations to GooseChase Winners!!!

Rodell Busy Bees-- 19,100 Points



SWAG to be delivered!

Thanks for participating





Extension
UNIVERSITY OF WISCONSIN-MADISON
EAU CLAIRE COUNTY

EAU CLAIRE COUNTY 4-H

GARDEN PROJECT

Our members asked for more gardening opportunities—and we're making it happen!

Youth in grades 3 and up can join the Garden Project for biweekly meetings in May, June, and July to learn about plants, work in a community garden, harvest food, and learn from a Master Gardener. Let's get growing together!

👉 Take the survey below to tell us which meeting times work best for you and what you'd like to plant during the Garden Project!

Survey:

<https://forms.gle/QuWiEBcXAhFBLuRA>



**QUICK
SURVEY**

QUESTIONS?

Contact Gracie Gray at
 ggray2@wisc.edu

Location:

Extension Eau Claire County Office



An EEO/AA employer, University of Wisconsin-Madison Division of Extension provides equal opportunities in employment and programming, including Title VI, Title IX, and ADA/504 requirements. Please make requests for reasonable accommodations to ensure equal access to educational programs as early as possible preceding the scheduled program, service or activity.

The Eau Claire County Garden Project: take the survey below!

Thanks to member feedback, 4-H is launching The Garden Project this summer. The Garden Project includes biweekly meetings in May, June, and July with hands-on learning about gardening, community garden work, harvesting, and enjoying fresh food.

Your voice matters! Complete the survey below to help us choose meeting times, decide what to plant, and create a club that reflects what youth want to learn and grow.

[Garden Project Survey](#)

VOLUNTEERS NEEDED!

We're rounding up **12 awesome volunteers (ages 10 & up—adults too!)** to join us at the Home & Garden Show on **Sunday, February 22nd** at the **Chippewa Expo Center**. The event runs from **9am–3pm**, and we've got two volunteer shifts available:

- 9am–12pm
- 12pm–3pm

Questions?
Reach out to Gracie Gray at glgray2@wisc.edu



Extension
UNIVERSITY OF WISCONSIN-MADISON
EAU CLAIRE COUNTY



Volunteer at the 2026 Home & Garden Show!

Looking for a fun way to spend a Sunday while helping out 4-H? We're rounding up 12 awesome volunteers (**ages 10 & up—adults too!**) to join us at the Home & Garden Show on Sunday, February 22nd at the Chippewa Expo Center. The event runs from 9am–3pm, and we've got two volunteer shifts available:

9am–12pm
12pm–3pm

We need 6 volunteers per shift, and you're welcome to pick just one—then enjoy exploring the Home & Garden Show during the other half of the day! Youth under 10 are welcome too, as long as they volunteer with someone age 14 or older. The more, the merrier!

We've got two super fun volunteer roles:

-4-H Activity Table Helper: Help kids paint rocks or build with LEGOs at our hands-on activity tables! These stations are always a huge hit and tons of fun.

-Lampert Lumber Activity Helper: Team up with Lampert Lumber staff to support youth in making bird houses, tool boxes, and more!

Questions? Reach out to Gracie Gray at glgray2@wisc.edu

Sign-up to volunteer at the Home & Garden Show



SAVE THE DATE!

Eau Claire County 4-H Cloverbud Activities!



- MARCH 3RD: READING ROUND-UP**
- APRIL 7TH: EARTH EXPLORERS**
- MAY 5TH: LEGO PLAY & BUILD**

Come join us for a free series of fun, hands-on Cloverbud activities just for 4-H members!

We ask that a parent or guardian stay with their Cloverbud for the entire program!

4-H is a family focused program, and siblings are welcome if that is what works best for your family!

Activities are offered the first Tuesday of the month **February-May**, from **6–7 PM** at the Extension Eau Claire County Office.

Contact Gracie Gray at glgray2@wisc.edu with questions.



**UW-MADISON EXTENSION
EAU CLAIRE COUNTY**

An AA/EEO employer: University of Wisconsin-Madison, Division of Extension provides equal opportunities in employment and programming including Title VI, Title IX and ADA requirements.

Eau Claire County 4-H Cloverbud Activities

Save the date for a free series of fun, hands-on Cloverbud activities just for 4-H members! We ask that a parent or guardian stay with their Cloverbud for the entire program. 4-H is a family focused program, and siblings are welcome if that is what works best for your family! Activities are offered the first Tuesday of the month **February-May**, from **6–7 PM** at the **Extension Eau Claire County Office**. No registration required. Contact Gracie Gray at glgray2@wisc.edu with questions.



Introduction to Ceramics Project Opportunity

Whispering Pines Ceramics is offering an "Introduction to Ceramics" class. (This is for the preformed ceramics.) The participant will learn how to clean greenware. Whispering Pines Ceramics will fire the greenware. The participant will paint their project for the fair.

The project will be a small item, it will take about 2 classes to complete the project and the cost will be \$5.00 per individual.

This activity can be completed as a club activity or an individual activity. If you or your club are interested in this opportunity please reach out to Vickie Nimmo, Whispering Pines Ceramics to learn more nimmokvj@outlook.com or 715-225-2394.

EMPTY BOWLS SERVICE PROJECT

MAKE A DIFFERENCE.

No Cost to the
Club thanks to a
donor

Contact Vickie
Nimmo



SUPPORT FEED MY PEOPLE FOOD BANK

Empty Bowls Service Project

The Family of Jean Hince wants to provide an opportunity for the youth of our community to learn a project that she held so dear to her heart. Jean spent many days in the Ceramic Shop making ceramic projects for donations to Empty Bowls, a fundraiser event for Feed My People Food Pantry.

This grant will allow any youth within the 4-H project to complete a glazed bowl for donation to 2026/2027 Feed My People – Empty Bowls event at no cost. Individuals or clubs can participate. The project process can be the full process of Cleaning to Glazing or the process can be simplified.

If you or your club are interested in this opportunity please reach out to Vickie Nimmo, Whispering Pines Ceramics to learn more. nimmokvj@outlook.com or 715-225-2394

EVENTS

CLOVERBUD ACTIVITY REMINDER

PAWS & VALENTINES



Come join us for a **free**, fun, hands-on Cloverbud activity! Youth will learn about the Eau Claire Community Humane Association and will make Valentines for the animals who live there! Youth will also learn about the 4-H Dog Project. **There will be dogs and at this activity!** We ask that a parent or guardian stay with their Cloverbud for the entire program! 4-H is a family focused program, and siblings are welcome if that is what works best for your family!



WHEN: February 3rd from 6 PM- 7 PM



WHERE: Extension Eau Claire County Office

For members in grades Kindergarten - 2nd

No registration required, contact Gracie Gray at glgray2@wisc.edu with questions



An EEO/AA employer, University of Wisconsin-Madison Division of Extension provides equal opportunities in employment and programming, including Title VI, Title IX, the Americans with Disabilities Act (ADA) and Section 504 of the Rehabilitation Act requirements

Cloverbud Activity: Paws & Valentines - February 3rd, 2026

Come join us for a **free**, fun, hands-on Cloverbud activity! On **February 3rd**, from **6 PM to 7 PM**, at the Extension Eau Claire County Office. Youth will learn about the Eau Claire Community Humane Association and will make valentines for the animals who live there! Youth will also learn about the Eau Claire County 4-H Dog Project. **There will be dogs and at this activity!** We ask that a parent or guardian stay with their Cloverbud for the entire program. 4-H is a family focused program, and siblings are welcome if that is what works best for your family! No registration required. Contact Gracie Gray at glgray2@wisc.edu with questions.

Project Exploration Day

SESSION LEADERS NEEDED

For Ages: K-2 & 3-5

Location: Extension Office

Participants sign up for 3, 45-minute sessions

March 14, 2026

Sign Up Here



Extension
UNIVERSITY OF WISCONSIN-MADISON



Project Exploration Days - March 14, 2026

SESSION LEADERS NEEDED:

Youth and Adult Volunteers, we need you! Please sign up to share a session with K-2nd or 3rd-5th graders in one or more slots from 9-noon. Fill out the Google Form **by January 25**.

Project Exploration Session Leader Sign Up



Help Promote 4-H!

Sign up to lead a session at 4-H Discovery Day at the LE Phillips Memorial Library from 1:00-4:00. Set up is at 12:30PM. Please promote to your club members. Animal projects welcome!

4-H Discovery Day sign up

CHIPPEWA, DUNN & EAU CLAIRE

PERFORMING ARTS FESTIVAL



**March 7, 2026
9am-3pm**

Elk Mound High School

405 University St, Elk Mound, WI 54739

For more details and to
register, visit the Performing
Arts Festival Dashboard at
go.wisc.edu/a6performarts
or scan the QR Code



Have questions? Reach out to your local
4-H Extension Educator for assistance.



UW-MADISON EXTENSION

The University of Wisconsin-Madison Division of Extension provides equal opportunities in
employment and programming in compliance with state and federal law.

Performing Arts Festival--Registration Now Open

Performing Arts Festival, Saturday March 7 between 9 and 3 (depending on registrations.) Rules and regulations can be found at the Performing Arts Festival website. Registration information is available on the Performing Arts Festival Website. Registration closes February 22.

Performing Arts Festival website

Volunteer Retreat

SAVE THE DATE

March 13, 2026

6-9PM

Location: Extension Office

For Youth & Adults



Extension
UNIVERSITY OF WISCONSIN-MADISON



Volunteer Retreat - Register!

Adult and Youth volunteers are encouraged to attend to learn more about themselves, build relationships across the county, and make plans for the coming 4-H year. March 13, 6-9PM at the Extension Office. I would love for at least 1 youth and 1 adult from your club or project group to attend. Attendees get a cool notebook, jibbitz, and other 4-H swag. Maximum of 30 attendees. Minimum of 6. Help plan for the future of Eau Claire County 4-H!!!

[Volunteer Retreat Sign Up](#)



Join 4-H and emBARK for



PAWSITIVE CHOICES: DOG SAFETY FOR KIDS

Learn smart tips for safely meeting and interacting with dogs!

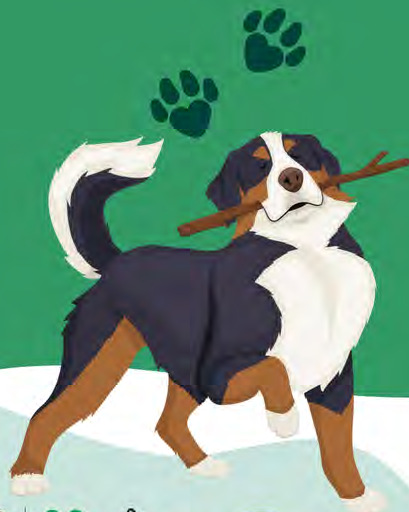
Details:

- Feb 14th | 10:30am-12pm | at emBARK
- Led by Heather Mishefske, certified behavior consultant and dog trainer
- Featuring certified therapy dogs



Kids will Learn:

- How to safely approach a dog
- Dog body language basics
- How to be respectful around pets



UW-MADISON EXTENSION
CHIPPewa COUNTY

The University of Wisconsin-Madison Division of Extension provides equal opportunities in employment and programming in compliance with state and federal law.

Scan To
Register!



Or go to go.wisc.edu/d2468r

Pawsitive Choices: Dog Safety for Kids

Chippewa County 4-H is partnering with emBARK in Eau Claire for a special session on February 14 from 10:30am to noon. Participants will explore dog safety, canine body language, and respectful ways to interact with pets. The workshop will be led by Heather Mishefske, behavior consultant and dog trainer.

This program is open to both 4-H members and non-members in Chippewa, Eau Claire, and Dunn County. For questions, contact Emma Bruder, AmeriCorps Member at ebruder@wisc.edu. Register at <https://go.wisc.edu/d2468r>.

Registration for Pawsitive Choices



Eau Claire County 4-H Older Youth Council 2025-2026 Calendar of Events

Sunday, September 7, 6:00 p.m.

Kickoff Meeting, Eau Claire Sport Warehouse, 2983 11th Street, Eau Claire, WI 54703

Monday, October 6, 5:30 p.m.

National 4-H Week Spaghetti Dinner Fundraiser, Pleasant Valley Community Center

Monday, November 3, 5:00 - 7:00 p.m.

Feed My People Service Night, 2610 Alpine Rd • Eau Claire, WI 54703

Monday, November 17, 6:00 - 8:00 p.m.

Tactical Escape, Oakwood Mall, 4800 Golf Rd #70, Eau Claire, WI 54701

Monday, December 1, 6:00 p.m.

Glass Orchard, 130 Deerfield Rd, Eau Claire, WI 54701

Friday, December 5, 5:30 p.m. arrival, 6:30 p.m.

Clearwater Parade, Grand & First Avenue, Eau Claire

Sunday, December 14, 3:30 p.m.

County Banquet, Pleasant Valley Community Center

Monday, January 5, 6:00 p.m.

Beaver Creek, S1 County Hwy K, Fall Creek, WI 54742

Monday, February 2, 6:00 p.m.

Bowling at Bowlwinkles, 1616 N Clairemont Ave #1, Eau Claire, WI 54703

Sunday, February 22, 8:00 a.m. to noon

Sarah Nelson Memorial Pancake Breakfast, Pleasant Valley Community Center

Monday, March 2, 6:00 p.m.

Painting at The Paint Shack, 2524 Golf Rd #2C, Eau Claire, WI 54701

Monday, April 6, 6:00 p.m.

Goat Farm Tour at Lymett Farms, 6667 36th St Colfax

Monday, May 4, 6:00 p.m.

Archery at Banbury Place, Enter through door number 17

Monday, June 1, 6:00 p.m.

Reboot Social, 220 S Barstow St, Eau Claire, WI 54701

Monday, July 6, 6:00 p.m.

County Fair Prep, Expo Center Pavilion, 5530 Fairview Drive, Eau Claire, WI

Older Youth Council

Older Youth Council is open to any youth enrolled in the 4-H program who is in 7th grade and up. They do a variety of service and fun. It's a great way to increase your leadership skills.

Contact leader, Jodi Thesing-Ritter at thesinjm@uwec.edu or Rachel Hart-Brinson at rachel.hartbrinson@wisc.edu for more information.

2026
Sarah Nelson Memorial
**Pancake
Breakfast**



Sunday, February 22

8:00 AM TO NOON

PLEASANT VALLEY COMMUNITY CENTER

Adults \$10.00

Children \$5.00

Children 4 & Under Free

Sponsored by the Eau Claire County 4-H Older Youth Council.
Proceeds to benefit Joshua's Camp and Sarah Nelson Memorial Scholarship Fund



Sarah Nelson Memorial Pancake Breakfast

February 22, 8am-noon at the Pleasant Valley Community Center.

Adults: \$10, Children: \$5, Under 4, Free



OYC Meeting February 2

Bowl Winkles: 6:00-8:00.

1616 N Clairemont Ave #1 for Dinner & Bowling

STATE 4-H EVENTS

Art Beat



REGISTRATION OPENING SOON!

WHO

Youth in grades 3-5, parents, leaders

WHERE

Upham Woods Outdoor Learning Center

WHEN

March 14-15, 2025

REGISTER JAN. 12TH - FEB. 8TH



Art Beat - Registration Open

For Art Lovers in grades 3-5, their parents, and project leaders. Located at Upham Woods, March 14-15. Registration will be open in 4-H Online January 12-Feb 8.

4-H Online

4-H LEADERS ASSOCIATION

4-H March 2026 Calendar Raffle

\$10.00 Ticket with Cash Prizes from \$50 - \$400

THANK YOU !



**FOR SUPPORTING
EAU CLAIRE COUNTY
4-H PROGRAMS +
SCHOLARSHIPS!**

2026 Calendar Raffle



Ticket Cost: \$10.00

Prizes drawn at 4:00 pm
at Extension Eau Claire
County, 227 1st St W,
Altoona, WI 54720
on dates shown.

4-H Leaders Association – Eau Claire County
227 1st St W, Altoona, WI 54720

March 2026

SUN	MON	TUE	WED	THU	FRI	SAT
1 \$100	2	3 \$100	4 \$400	5 \$100	6	7 \$100
8 \$100	9	10 \$100	11	12 \$100	13	14 \$100
15 \$100	16 \$50 \$50	17 \$200	18	19 \$100	20 \$50 \$50	21 \$100
22	23	24 \$100	25	26 \$100	27	28 \$100
29	30	31 \$100 \$100 \$100 \$100				

License No: R0005640A-47530

The 4-H Leaders Association is sponsoring a calendar raffle for March 2026. Proceeds support Eau Claire County 4-H Programs, 4-H Camp, and Scholarships for Educational Experiences.

We are asking 4-H families to help raise funds so that we can continue this work for the next generation of 4-H youth. We are having our 2nd Annual Calendar Raffle in March 2026. We are encouraging each 4-H family to sell at least 10 raffle tickets. This year's scholarship recipients will be asked to sell an additional 5 raffle tickets, which they were given at the County Banquet. Other 4-H families can get raffle tickets from their club leader. Scholarship recipients and club leaders will be asked to return raffle ticket stubs and money to me by Friday, February 20th or bring them to the Sarah Nelson Pancake Breakfast on February 22nd.

Checks can be made out to Eau Claire County 4-H Leaders. Please contact me with questions.

Wendy Duerkop, Leaders Association President 715-579-0006



Next Meeting - March 10

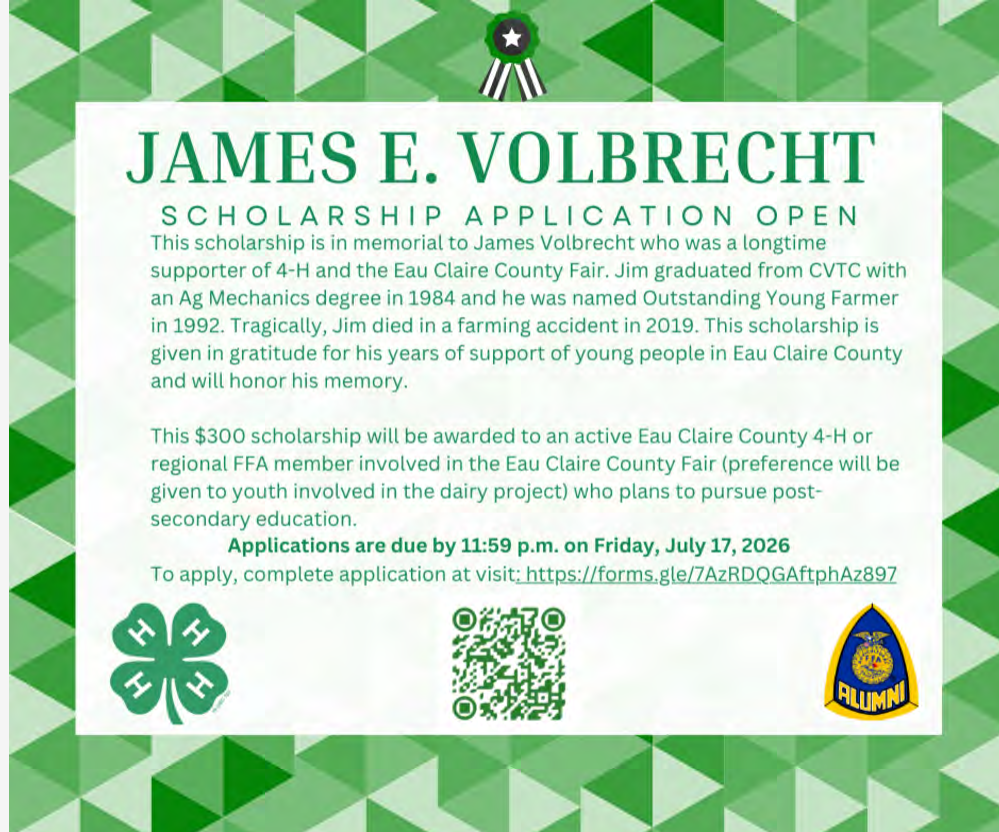
We have a full Executive Board! Thank you to all who have volunteered.

Leaders Association Meetings are held at the Eau Claire County Extension Office the 2nd Tuesday of September, November, January, March, May, and June. 6:00pm will be a time to hear policy updates, ask the 4-H educator questions, and brainstorm club ideas. Meetings will start at 6:30pm. PLEASE make every effort to send a representative to these meetings. Attending is how we make connections and learn from each other to bring the best program we can to the young people in our clubs. It connects your local club program to the wider county program and makes you aware of the wider opportunities in 4-H so that you can promote those to your club members.

[2025-2026 Leaders Association Google Folder](#)

[2024-2025 Leaders Association Google Folder](#)

SCHOLARSHIPS



James Volbrecht Scholarship

\$300 scholarship awarded to Eau Claire County 4-H or FFA member involved in the Eau Claire County Fair who plans to pursue postsecondary education. Due 11:59PM on Friday, July 17

James Volbrecht Scholarship Application

4-H Scholarship

Each year, Wisconsin 4-H recognizes outstanding students in our communities with scholarships that celebrate dedication, leadership, and achievements in 4-H. We're excited to announce that this year we will be awarding more than \$20,000 in scholarships to outstanding Wisconsin 4-H members and alumni.

Applications for eligible high school seniors and 4-H alumni opened on Jan. 1, 2026. To apply, applicants must:

- Have been a Wisconsin 4-H member for at least three years
- Have a grade point average of at least 2.5 on a 4.0 scale
- Be enrolled or planning to enroll at a university, college, or technical school during the 2026-2027 academic school year
- Have not received a Wisconsin 4-H Collegiate Scholarship

For the application form, specific scholarship information, and complete instructions on how to apply, visit <https://4h.extension.wisc.edu/opportunities/wisconsin-4-h-scholarships/>.

Any members of your family who meet this criteria are encouraged to apply!

Applications must be received electronically by no later than 11:59 p.m. Central Time on March 1, 2026. Applicants who are awarded scholarships will be notified via email by mid May.

Thank you for your and your family's dedication to Wisconsin 4-H!

Design best-practices suggest a large font size for easy readability both on desktop and mobile devices.



Wisconsin Rural Opportunities Foundation Scholarship

Applications for the WROF, Inc. Premier Scholarship Award Program are now open to high school seniors from rural Wisconsin. WROF, Inc. will present \$3,000 scholarships to seven outstanding high school students. The awards will help cover tuition and educational expenses for post-secondary education in Wisconsin. Scholarship requirements include the following: High school seniors must have lived in rural Wisconsin for at least two years, currently attend school

in Wisconsin, and plan to return to their rural roots upon graduation. WROF, Inc. will accept applications online until 11:59 pm on Friday, March 6, 2026. Please visit www.wrof.org for more information, to access the Premier Scholarship application, and to learn about WROF, Inc.



EAU CLAIRE COUNTY BREAKFAST ON THE FARM

2026

Scholarship

Apply by May 1, 2026

APPLY NOW >



Non-Discrimination Statement:

The University of Wisconsin–Madison Division of Extension provides equal opportunities in employment and programming in compliance with state and federal law.

La University of Wisconsin–Madison División de Extensión proporciona igualdad de oportunidades en el empleo y en sus programas, según lo que exige la ley federal y estatal.

Lub Tsev Kawm Ntawv University of Wisconsin–Madison Division of Extension muab cov cib fim uas muaj vaj huam sib luag hauv kev ua hauj lwm thiab kev muab kev pab raws li lub xeev thiab tsoom fww teb chaws txoj cai lij choj.



Rachel Hart-Brinson, Bilingual 4-H Program Educator
Rachel.hartbrinson@wisc.edu
608-572-3656

Extension Eau Claire County

227 1st Street W
Altoona, WI 54720
715-839-4712

Share this email:



[Manage](#) your preferences | [Opt out](#) using TrueRemove®

Got this as a forward? [Sign up](#) to receive our future emails.

View this email [online](#).

227 1st St. W
Altoona, WI | 54720 US

This email was sent to .

To continue receiving our emails, add us to your address book.

emma®

[Subscribe](#) to our email list.